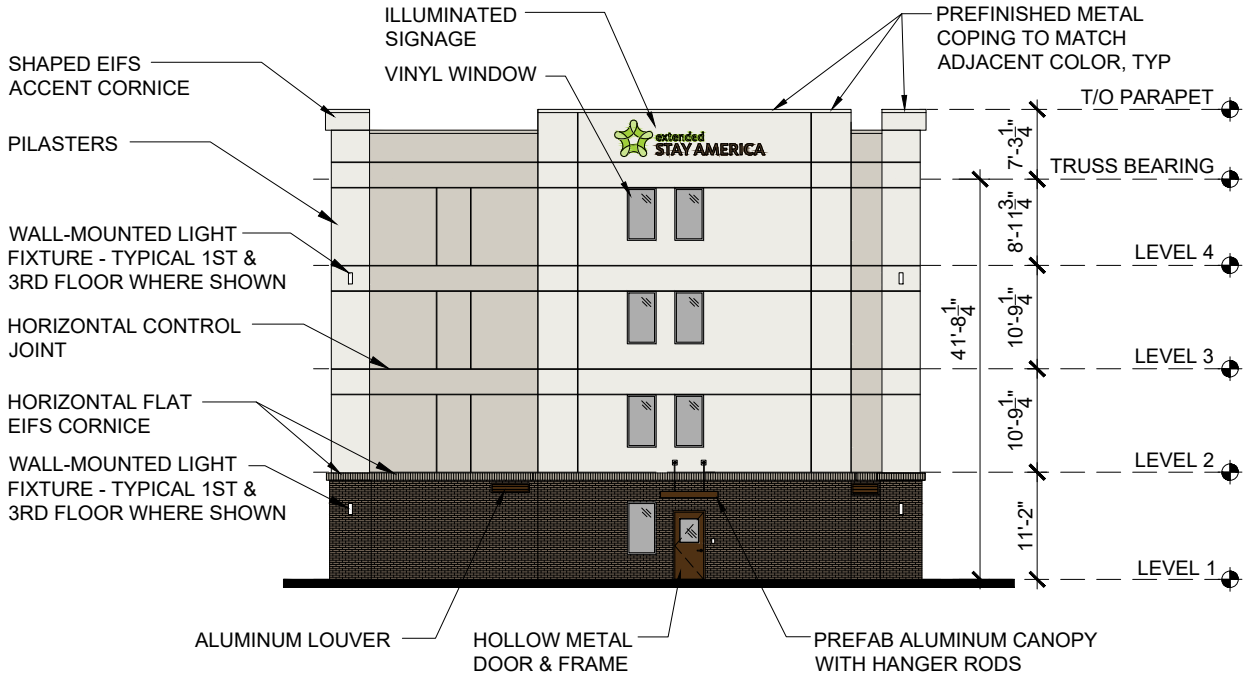


COLOR / MATERIAL LEGEND

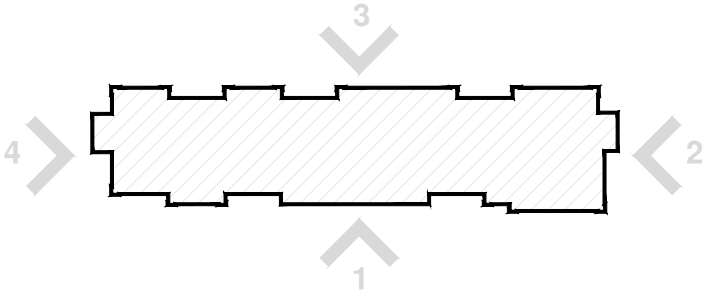
- STUCCO: PPG 1021-6 "CURLEW"
- STUCCO: PPG 1025-1 "COMMERCIAL WHITE"
- STUCCO: PPG 1025-3 "WHISKERS"
- STUCCO: PPG 1025-4 "SHARKSKIN"
- EXTERIOR TRIM: CP410 "BRONZETONE"
- KINGSIZE BRICK BY ACME BRICK

TOTAL BUILDING % OF MATERIAL

STUCCO:	18,428 SF	(60%)
BRICK:	7,973 SF	(27%)
OPENINGS:	3,996 SF	(13%)
TOTAL:	30,397 SF	(100%)



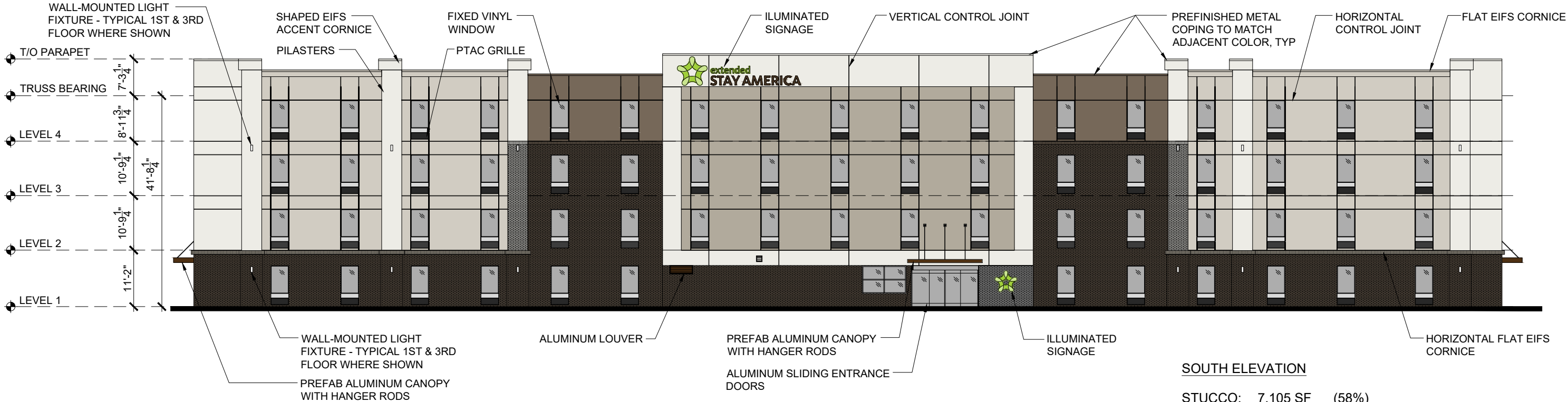
2 EAST ELEVATION



KEYPLAN

EAST ELEVATION

STUCCO:	2,185 SF	(73%)
BRICK:	644 SF	(22%)
OPENINGS:	136 SF	(5%)



1 SOUTH ELEVATION

SOUTH ELEVATION

STUCCO:	7,105 SF	(58%)
BRICK:	3,377 SF	(27%)
OPENINGS:	1,895 SF	(15%)