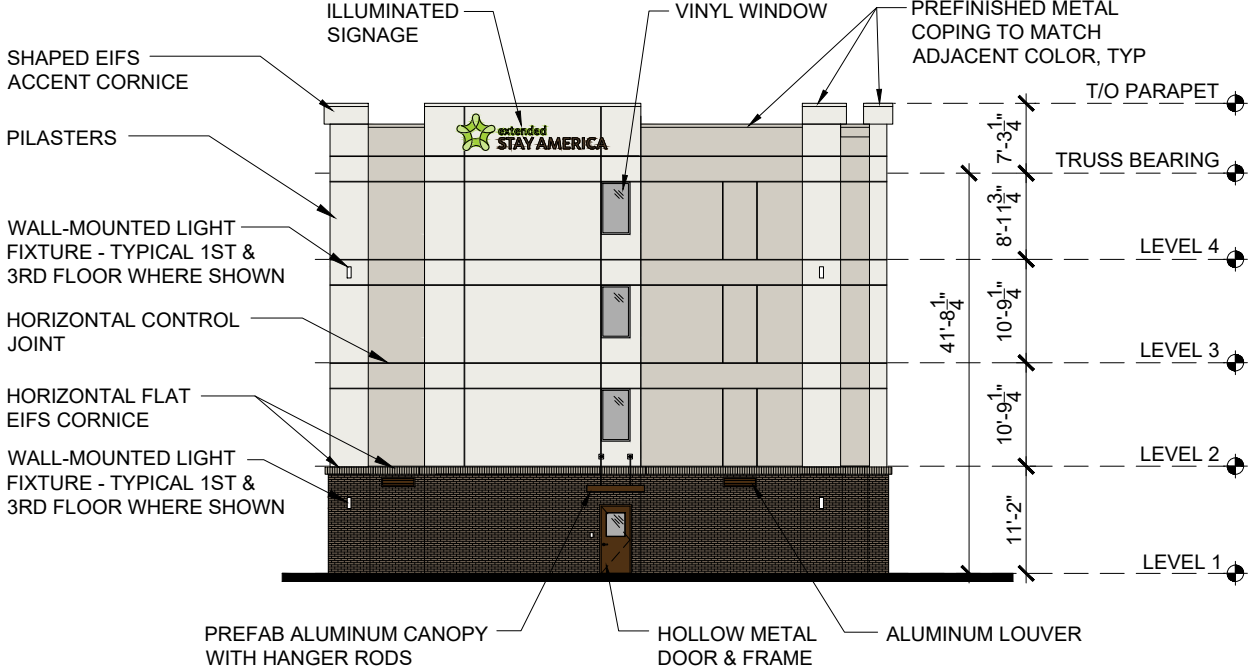


COLOR / MATERIAL LEGEND

- STUCCO: PPG 1021-6 "CURLEW"
- STUCCO: PPG 1025-1 "COMMERCIAL WHITE"
- STUCCO: PPG 1025-3 "WHISKERS"
- STUCCO: PPG 1025-4 "SHARKSKIN"
- EXTERIOR TRIM: CP410 "BRONZETONE"
- KINGSIZE BRICK BY ACME BRICK

TOTAL BUILDING % OF MATERIAL

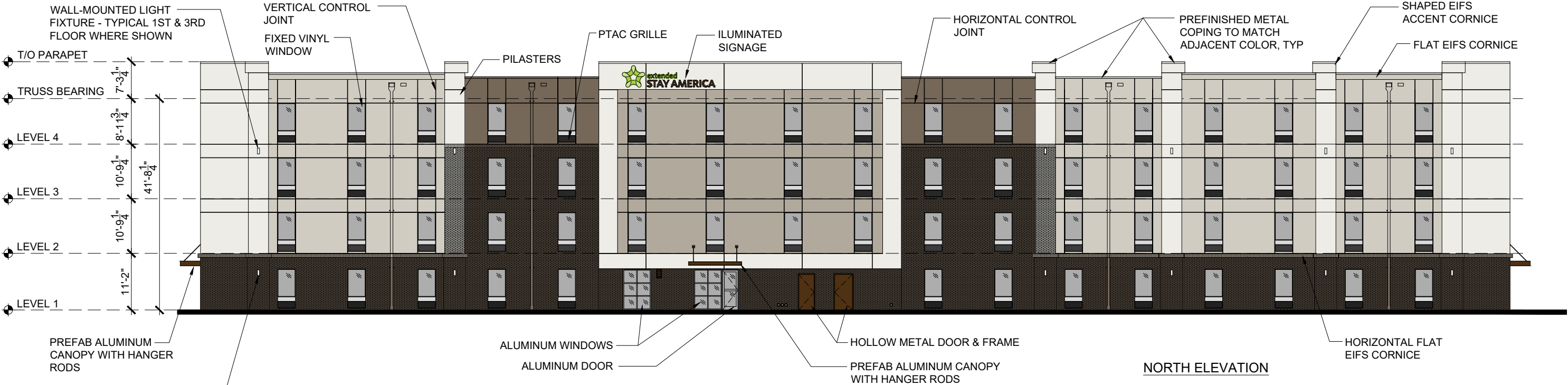
STUCCO: 18,428 SF (60%)  
BRICK: 7,973 SF (27%)  
OPENINGS: 3,996 SF (13%)  
TOTAL: 30,397 SF (100%)



4 WEST ELEVATION

WEST ELEVATION

STUCCO: 2,098 SF (75%)  
BRICK: 623 SF (22%)  
OPENINGS: 72 SF (3%)



3 NORTH ELEVATION

NORTH ELEVATION

STUCCO: 7,040 SF (58%)  
BRICK: 3,329 SF (27%)  
OPENINGS: 1,893 SF (15%)