



**DESIGN BUILD SERVICES FOR GREGG  
CLARKE PARK SKATE PARK  
RFQ-2022-12-PARD**



**SPA**  
SKATEPARKS

with



**NEWLINE**  
SKATEPARKS

NOVEMBER 2<sup>nd</sup>, 2022

## LETTER OF INTRODUCTION

Mariana Espinoza, CPRP, AF - Parks and Recreation Director - City of Kyle

### RE: DESIGN BUILD SERVICES FOR GREGG CLARKE PARK SKATEPARK: RFQ-2022-12-PARD

Thank you for considering our team for modern skatepark development assistance. We believe this project will be an excellent investment in the youth of Kyle and a welcome addition to the community.

We are pleased to submit our proposal for municipal skatepark design-build services. **SPA Skateparks (Prime Contractor and Project Director)** *in partnership with* **New Line Skateparks (Design Sub Consultant Team)** is proud to offer a unique combination of focused local resources and internationally renowned design-build expertise capable of addressing the full suite of needs for this project, its stakeholders and the City. Our team is comprised of registered landscape architects, engineers, graphic designers and construction professionals who are passionate active skateboarders. We are Texas' most experienced and respected design-build team with a combined portfolio of more than 400 highly recognized concrete skateparks completed across the United States, Canada, Europe and Australia over the last decade.

While our team's collective work spans 4 continents, our 'heart' and focus remains here in Texas. To date, we have combined experience in over 40 highly recognized concrete municipal skateparks in the State, 30 of which involved our team completing all professional design AND construction undertakings through a fixed price design-build structure. We have been careful to monitor our company growth and workload over the last 20 years and offer our full confirmation that our team has the availability and specialized resources required to execute this important community project. In short, Texas is our home and integrated concrete municipal skateparks is our only business - this project will have our the full breadth of our capabilities, experience and passion!

For the opportunity at hand, we are excited about the prospect of employing our unique skill, experience and resources as a proven working team to deliver significant efficiencies and increased quality throughout the development process. We will approach this project with strong contextual understanding and a heightened ability to navigate through the community outreach process, technical issues, municipal protocol, and local construction environment. We are aware of this project's history, unique site context and important community engagement considerations, and are excited about the prospect of creating an integrated, one-of-a-kind multiuse wheeled sport landscape that will truly enhance Gregg Clarke Park and serve as a celebrated destination for Kyle youth and families. Finally, our development team is prepared to begin design work immediately and proceed through each project phase in cooperation with the City.

Thank you again for considering our team and please do not hesitate to contact me directly should you have any questions or comments.

Sincerely,



Yann Curtis

Vice President and Project Signatory  
Cellular: 512.203.5445

## TABLE OF CONTENTS

|  |                      |
|--|----------------------|
| <b>Cover Letter</b>  | <b>Previous Page</b> |
| <b>Team Profile and Company History</b>                        | <b>6</b>             |
| <b>Team Organization and Key Staff</b>                         | <b>12</b>            |
| <b>Company and Principal Staff Experience</b>                  | <b>18</b>            |
| <b>Project Understanding</b>                                   | <b>58</b>            |
| <b>Our Approach for Proposed Skatepark Improvements</b>        | <b>62</b>            |
| <b>Methodology and Timeline</b>                                | <b>80</b>            |
| <b>Quality Control (including schedule and budget control)</b> | <b>86</b>            |
| <b>Proposal Form and Insurance Documents</b>                   | <b>Attached</b>      |



# COMPANY PROFILE AND HISTORY







ust work and dare ||

one really wants to live. ||

/incent van Gogh ||



## TEAM PROFILE AND HISTORY

**SPA Skateparks (est 2006) with New Line Skateparks (est 2001) is North America's premier municipal skatepark development collaborative.** With more than 400 highly recognized projects throughout Texas around the globe, we are proud to serve one of the world's longest running and most respected concrete youth park design-build teams.

Our staff (~75) is comprised of registered landscape architects, engineers, planning experts, and construction professionals who are passionate active skateboarders, BMX riders and mountain bike enthusiasts. This passion inspires us to deliver cutting edge designs and authentic finished environments that create a meaningful connection between youth and the communities in which they live.

***While our team's collective work spans 4 continents, a large part of our 'heart' and focus remains at home here in Texas. To date, we have combined experience in over 40 high profile concrete skateparks in the State, 30+ of which were completed under turn-key design-build fixed budget contracts.*** We look forward to bringing our unparalleled level of region-specific skatepark design-build resources and experience to the current opportunity in Kyle.



### Plaza at the Forks, Winnipeg, MB

*"The quality of the design is demonstrated by the international recognition the Plaza received from the skateboarding community. The Plaza at the Forks sets the bar for other Cities throughout North America which are struggling to respond to similar issues."*

CSLA Jury Comments

Canadian Society of Landscape  
Architects  
**National Honour Award**



### NE Community Park Skatepark Frisco, TX

American Shotcrete Association  
**Outstanding Shotcrete Award**



Texas Recreation and  
Parks Society  
**Excellence in Design Award**



## What We Believe

SPA / New Line is committed to the improvement of natural and built environments for all generations. Our goal is to promote environmental quality as a way to protect what we value in our unique region. We carry this philosophy through in wheeled sports plaza development. Through listening, watching and testing ideas, we create youth park solutions that work in harmony with existing environments and ultimately lead to fully integrated places.

Skateparks are changing. The days of the stereotypical 'grey square' have long passed as a new era of concrete facility design responds to far more than purely function. When designed and constructed with strong community input and sensitivity to the surrounding context, skateparks not only become beloved destinations for local youth but celebrated public spaces for all to enjoy!



## Services

**Planning** - SPA / New Line provides planning expertise to municipal governments for action sports networks as well as individual project developments. Through completing the award winning Calgary Skateboarding Amenities Strategy in 2012, as well as Skateboarding/ Action Sports Master Plans for Waterloo ON, Lethbridge AB, Arlington TX, and Port Coquitlam BC, , we have established a proven, transparent and credible planning process that has been widely recognized as a benchmark for our industry. Whether it be site selection, feasibility studies, fundraising programs, or long term facility development strategies, we strive to offer the best mix of qualified personnel and specialized resources for each unique planning challenge.

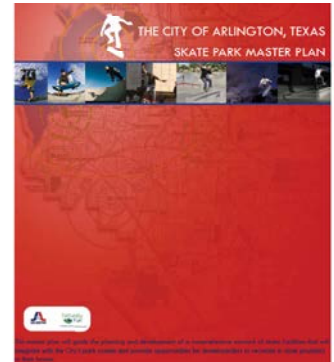


— Collingwood  
Youth Park  
Concept Master Plan  
Edmonton, AB

Site Selection Boards  
Medicine Hat, AB —

**Public Consultation** - SPA / New Line provides comprehensive consultation services to facilitate community input in the design of skateparks and other progressive public spaces. As passionate skateboarders and avid park users ourselves, we know how important participation by youth and other members of the community will be to the long term success of each project. No matter what project size, we deliver a tailored program of hands-on, interactive design workshops and public presentations facilitated by principal members of our team. Outside of our scheduled meetings, youth and other stakeholders are encouraged to continue to submit written comments, sketches, pictures etc. through our specially developed custom web portal for immediate and ongoing feedback. Overall, we believe engaging the community in a meaningful way is one of the most critical aspects of any skatepark design journey and a key factor to our team's continued success.

1st design workshop - Austin, TX —  
Pre-construction community info session - Arlington, TX



City of Arlington Skatepark Master Plan

Texas Recreation and Parks  
Society  
Planning Excellence Award

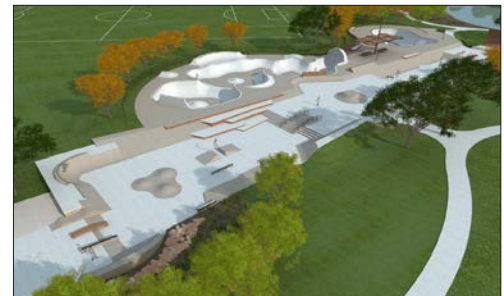


## Services...

**Design** - SPA / New Line designs award winning municipal concrete skateparks and other wheeled sport environments that continually set the bar for international skatepark development. From day one, we have chosen to think outside the 'concrete square' by leading the industry in introducing a site and community-specific design approach, integrated art/sculptural installations, green/sustainable development initiatives, CPTED principles, innovative materials and aesthetic detailing, progressive lighting schemes, skateable donor recognition signage, and architecturally striking skatepark roof structures. We believe that every project and community has a unique 'story' that can be told through authentic and enduring skatepark architecture. To realize our unique designs, we take great pride in delivering photorealistic 3D facility modeling, animated project 'fly-through' experiences, and certified technical drawings to ensure complete project understanding and a thorough construction process for each park.



Plaza at the Forks - Winnipeg, MB



NE Community Youth Park - Frisco, TX

**Construction / Construction Administration** - SPA / New Line is one of North America's most experienced providers of large-scale municipal skatepark construction services - serving as the General Contractor on a significant portion of the 400 + designs completed by our team. Whether it be complete turnkey project solutions or specialty services/products, we are recognized as a global leader in the development of site-built concrete skatepark construction technology and techniques. Our team has also worked hard to lead the industry in cost and schedule control, safety, and concrete quality accreditation - with a guarantee of design-build budget certainty, on-time project performance, and ACI (American Concrete Institute) certified team members overseeing all shotcrete operations. Finally, New Line / SPA is fully bonded and insured to among the industry's highest limits and employs approximately 60 dedicated field staff leading municipal skatepark projects across the world.



Chemainus Skatepark - Chemainus, BC



Roanoke Skate Plaza - Roanoke, TX



## Youth Park Design Philosophy....

SPA / NEW LINE has worked extensively in the planning, design and construction of concrete skateparks, BMX parks, mountain bike courses and other progressive 'casual recreation' facilities. Although this emerging area of recreation is not new, the participation levels associated with inline, BMX, mountain biking and skateboarding have climbed to exceptional levels over the last 15 years.

The inclusion of 'Action Sports' in the planning process benefits the whole community by making children, youth and adults that participate in these activities feel valued. Developing a youth park strategy that includes action sports programs and facilities will introduce new experiences and challenges for a broad demographic that is often difficult to engage and/or overlooked in community parks planning.



Developing a successful youth park design requires a consultant to think and act in a way that respects the desires of future park users. This respect must be balanced with an understanding of construction tolerances, safety standards, community needs, security, and budget. SPA / NLS has a diverse and qualified staff who consistently seek new ways to achieve the expectations of the target user group while setting realistic goals, limits and deadlines.



# TEAM ORGANIZATION AND KEY STAFF

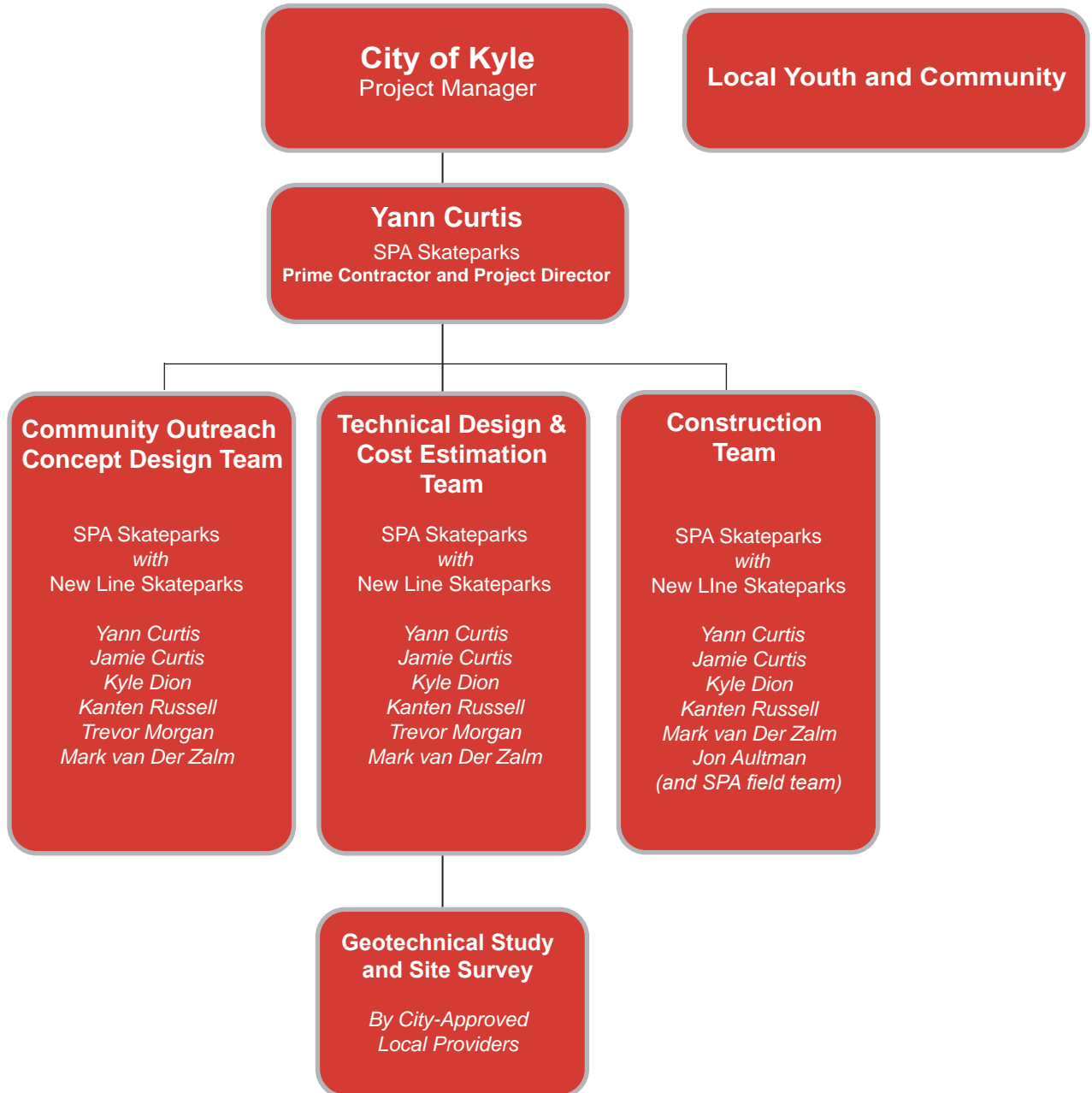








## TEAM ORGANIZATION





## KEY PROJECT STAFF

### Yann Curtis

SPA Skateparks - Owner / Project Director



Yann Curtis is the most experienced skatepark project director in the State having developed projects exclusively for Texas municipalities since 2006. Formerly the owner of the nationally acclaimed indoor Skatepark of Austin and founder of the highly successful online skateboard retailer Gallery Mailorder, Yann Curtis is an active skateboarder with over 15 years of professional skate industry business administration experience. Yann supports clients through our team's tried-and-true 'design-build skatepark process' while at the same time guiding a unique and fully customized service approach for each and every community. In addition to his project management role, Yann is an ACI Certified Shotcrete Nozzleman with an intimate understanding of skatepark construction techniques and methodologies. Yann will serve as this project's primary contact and Project Director.

### Kyle Dion

New Line Skateparks - President / Skatepark Terrain Designer



Mr. Dion is the founder and president of New Line Skateparks Inc. He will be responsible for overseeing the design of all skatepark terrain. Mr. Dion is a seasoned active skateboarder who has tirelessly dedicated himself to the promotion of the sport across North America and throughout the world. He is a current executive board member of the Canadian Skateboarding Association (CASA) and has provided his professional consulting and construction services for over 400 parks across the United States, Canada, Europe, South America and Australia. In addition to receiving numerous recognitions for his work (including the esteemed Canadian Society of Landscape Architects National Honour Award and Skaters for Public Skateparks Public Space Award), Mr. Dion is regularly featured in prominent international media publications for his unique modern recreation contributions.

### Mark van der Zalm RLA, LEED® AP

New Line Skateparks / van der Zalm + associates - Principal Landscape Architect



Mr. van der Zalm serves as the lead landscape architect for the SPA / New Line team. His duties will include liaising with the client, stakeholders and the public as well as certified technical design development. Mr. van der Zalm is a registered member of the American Society of Landscape Architects and has been the recipient of both Regional and National Honor awards for his skatepark work across North America (*most recently receiving the 2013 TRAPS Excellence in Planning Award for his work on the Arlington TX Skatepark Master Plan*). He holds a Masters Degree in landscape architecture and environmental planning with design expertise centered on parks and recreation development and urban design. Mark has served as the lead Landscape Architect on over 200 recognized concrete youth/skateparks and is a frequent presenter on modern skatepark development across North America and Europe.

**Jamie Curtis**

SPA Skateparks - Owner / Construction Director / Cost Estimation



Mr. Curtis serves as the co-founder and president of SPA Skateparks. Well known within the Southern US skateboarding industry, Mr. Curtis has been actively involved in cutting edge skatepark design and construction for over 10 years and serves as one of the State's most experienced concrete skatepark contractors. Under Jamie's direction, all of SPA Skateparks projects have been completed on time and within budget. In addition to working on the highly anticipated \$1.5 Million Frisco Skatepark, Jamie has also recently directed design and construction operations on the Conroe, Cedar Park, Odessa and Boerne Skateparks, as well as construction works on the expansive \$1.8 Million McKinney Skatepark and Arlington Vandergriff Skate Plaza. Jamie will serve as our team's construction director for the project at hand.

**Kanten Russell**

New Line Skateparks - project manager and senior skatepark designer



Kanten is a former professional skateboarder with over 13 years of international experience in the action sports industry. After officially retiring from professional skateboarding, Kanten worked at the City of Chula Vista in the engineering/surveying department followed by a decade in the architectural design world serving as a facility development consultant. Since turning to design, Kanten has spent the last 15 years utilizing his knowledge of action sports on over 260 youth park facilities, including all styles and scales of municipal skateparks and BMX tracks. Kanten's technical expertise is enhanced through his experience on the professional skateboard circuit as well as his role as a father of 2 daughters - informing creative variations on flow and complexity of obstacles to deliver a truly a compelling end-user experience for all ages and abilities.

**Trevor Morgan** BComm

New Line Skateparks - vice president



Mr. Morgan is an active skateboarder with over 20 years of large-scale municipal project development experience. His dedicated work has contributed to the creation of over 200 highly recognized ongoing youth organizations, public skateparks, and emerging sport programs across the United States, Europe and South America. Mr. Morgan is also an internationally respected speaker on the subject of municipal youth park / wheeled sports facility planning - presenting on a regular basis to State planning and recreation organizations (ie, TML, TRAPS) across North America. In addition to his role as Director of Business Development, Trevor is responsible for assisting with community needs analysis and facility development strategy.



**Adam Parker PEng LEED® AP**

New Line Skateparks / van der Zalm + associates - Civil Engineer



Mr. Parker is an experienced Texas-licensed project engineer with LEED Certification. He has successfully completed residential, commercial, institutional and high profile public sector concrete skatepark projects. He has worked both as a project designer and as an administrator and plan reviewer. His knowledge and experience of multiple disciplines in the engineering, planning and design fields are used extensively to ensure proper project facilitation. Adam will coordinate all engineering reviews for the project at hand.

**Jon Aultman**

SPA Skateparks - site foreman / construction detailing



Mr. Aultman serves as SPA Skateparks' lead site foreman. Jon brings over 25 years of skateboard park design and construction experience specializing in all types of construction situations: public, private, high profile, municipalities, events, portable and non-profit. He has a fundamental knowledge of design and construction for "transitional skateparks" (bowls and custom cornering) as well as modern street/plaza terrain. Jon is also an ACI Certified Shotcrete Nozzleman and will serve as this project's site foreman from first shovel through grand opening.

**Everett Tetz**

New Line Skateparks - manager of business development and community outreach



Everett Tetz is a former Vice Principal of the Red Deer Public School district. He has a breadth of experience working with youth and was an active member of the provincial Diversity, Equity and Human Rights committee for several years. Everett has a passion for rethinking the way we connect with youth and believes that their involvement in education and community needs to be meaningful and authentic. In 2013, Everett created Skate Class - a school based skateboarding program that is the first of its kind in Canada with it's own locally approved curriculum. Everett has since launched a non-profit organization that seeks to connect marginalized populations to their communities by providing mentorship, training, and support, through skateboard programming and outreach. Everett is eager to connect with communities across North America interested in involving youth, community agencies and other stakeholders in the planning, designing and building of custom skatepark facilities and exploring a variety of programming opportunities. As a valued-added service for the project at hand, Everett will be available to meet with local School Administrations and share the Skate Class curriculum, and assist the City with exploring the creation of other sustainable/ongoing, community-driven skatepark programming initiatives.









# **COMPANY AND PRINCIPAL STAFF EXPERIENCE**





**NEWLINE**  
SKATEPARKS

WITH

**SPA** SKATEPARKS

## Mueller Skatepark and Pump Track Austin, TX

*Located in the heart of the 700-acre award winning, master-planned Mueller community (a redevelopment of Austin's Robert Mueller Municipal Airport), is Texas's first combination concrete pump track and urban skate plaza development. Along with offering a versatile assortment of custom skateboarding, BMX/Mountain Bike, inline, and scooter-friendly terrain, the park also serves as a marquee family gathering and socializing area within the community's expansive Southeast Greenway recreation and natural lands corridor. Beloved by locals and visitors alike, the facility has garnered considerable Nationwide acclaim, demonstrating what's possible when Residential Developers, City Staff, Action Sports Consultants, and Community Members can accomplish when working together.*

**Project Budget:** ~ \$1,100,000

**Timeline:** Fall 2021 - Summer 2022

**Client:** Catelus Developments / City of Austin

### Team Responsibilities:

- site analysis
- public process
- conceptual and final design
- full construction services







**NEWLINE**  
SKATEPARKS

WITH

**SPA** SKATEPARKS

## Mueller Skatepark and Pump Track...continued







**NEWLINE**  
SKATEPARKS

WITH

**SPA** SKATEPARKS

## **NE Community Skatepark** Frisco, TX Destination Park

The Northeast Community Skatepark in Frisco, TX is a destination level, all-wheeled mecca designed to accommodate users of all ages and skill levels - from kids to grey beards, and beginners to professionals. With over an acre of carefully detailed skateable terrain, this skatepark has A LOT OF EVERYTHING....FOR EVERYONE. The park consists of 3 main areas: the central Plaza, expansive modern Flow Complex, and competition-level Vert Bowl. The terrain experience is complimented by a state-of-the-art lighting system, tons of integrated viewing and rest areas, custom sculptural features, stunning landscaping and mature oak trees, and a network of pedestrian linkages to the greater site's amenities (soccer fields, children's playscape, fishing pond etc). A big thank you and congrats to the City of Frisco for investing in this landmark community-driven project!

**Timeline:** Fall 2015 - Summer 2017

**Client:** City of Frisco, Brett Bergeron. 972.292.6516  
BBergeron@friscotexas.gov

### **Team Responsibilities:**

- site analysis and public process
- conceptual and final design
- construction





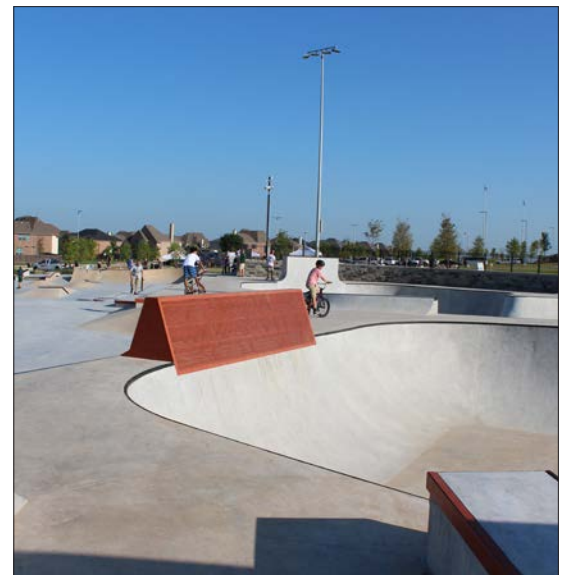


**NEWLINE**  
SKATEPARKS

WITH

**SPA** SKATEPARKS

## NE Community Skatepark - continued...







**NEWLINE**  
SKATEPARKS

WITH

**SPA** SKATEPARKS

## **Roanoke Skate Plaza** *Roanoke, TX* Community Park

*Roanoke TX, the 'Unique Dining Capital of Texas', continues to make it's mark in the DFW Metroplex with the creation of a one of a kind skateable art plaza and pool style bowl in phase 2 of the City's popular Cannon Parkway Park. Nearly 20,000 sqft of meticulously detailed terrain offers opportunities for virtually all ages, skill levels, and riding styles, while the park's skateable 'dinnerware' sculptures guarantee a truly unforgettable visitor experience for users and spectators alike.*

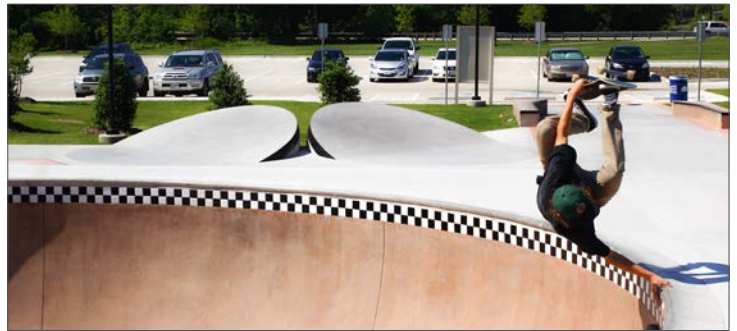
**Project Budget:** ~ \$700,000

**Timeline:** Spring 2015

**Client:** City of Roanoke

### **Team Responsibilities:**

- site analysis and public process
- conceptual and final design
- construction







**NEWLINE**  
SKATEPARKS

WITH

**SPA** SKATEPARKS

## **Vandergriff Skatepark** *Arlington, TX* *Destination Park*

Arlington, TX's Vandergriff Park Skatepark features three distinct areas of plaza, bowl and modern snake-run youth park terrain designed to be constructed in phases relative to project funding milestones. Skateable features take artistic cues from the iconic City of Arlington logo and the facility's overall layout harmonizes with existing mature trees found throughout the surrounding site. Now complete, the skatepark not only serves as the City's first modern concrete skateboarding facility but one of the largest and most compelling destination parks in the region.

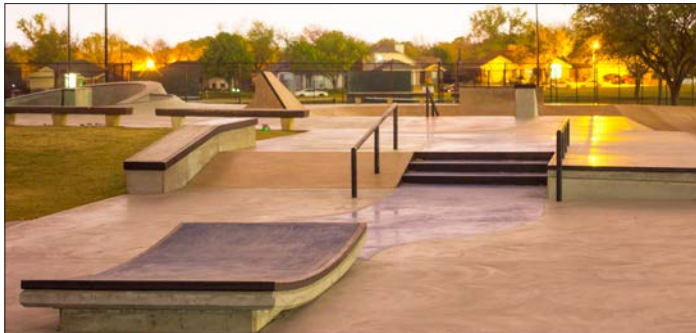
**Project Budget:** ~ \$1,200,000

**Timeline:** Summer 2012 - Spring 2014

**Client:** City of Arlington

### **Team Responsibilities:**

- site analysis and public process
- conceptual and final design
- speciality concrete construction







**NEWLINE**  
SKATEPARKS

WITH

**SPA** SKATEPARKS

## **MUD Skatepark** Wells Branch, TX *Community Skatepark*

The Wells Branch Municipal Utility District (MUD) Skate Park is located next to the Recreation Center at 3000 Shoreline Drive. Funded, developed and maintained by the Wells Branch MUD, it's the newest skatepark located within the Austin, Texas city limits. The majority of the plaza terrain is on the upper section of the site, and incorporates the covered walkway that connects to the Recreation Center. A three sides, open-ended flow bowl with depths of 4-5 ft deep connect the upper plaza area with the turn-around, lower section. Users who attended the public design meetings relayed that a shallower, friendlier bowl complex can be attractive to every skater despite skill level. The third, lower section of the skatepark is not only a turn-around area to get back up to the plaza. Skaters can also stay and hit a combo of banks, hips and transitions for some unique lines.

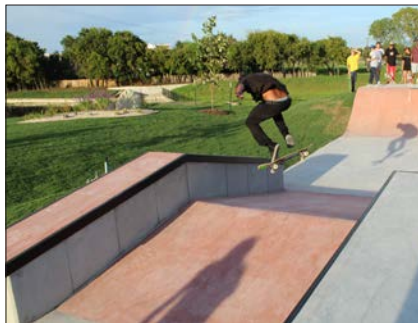
**Project budget:** ~ \$350,000

**Timeline:** Summer 2018

**Client:** Wells Branch Municipal Utility District

### **Team Responsibilities:**

- site analysis and public process
- conceptual and final design
- construction







**NEWLINE**  
SKATEPARKS

WITH

**SPA** SKATEPARKS

**McKinney Skatepark** McKinney, TX  
*Destination Park*

Through a 6 month collaborative development process with local youth, surrounding community members, and our design-build team, the City of McKinney has created one of the most progressive youth park developments in the Country. Located in the City's prized Gabe-Nesbitt Park, the skatepark offers over 30,000 sqft of 'Unique by Nature' plaza, obstacle, bowl, and ditch-inspired terrain designed for all ages, abilities, and riding styles.

**Project Budget:** ~ \$1,800,000

**Timeline:** Fall 2012 - Spring 2013

**Client:** City of McKinney

**Team Responsibilities:**

- site analysis and public process
- conceptual and final design
- specialty concrete construction







**NEWLINE**  
SKATEPARKS

WITH

**SPA** SKATEPARKS

**Kasmiersky Park All Wheel Plaza** Conroe, TX  
Community Park

Once again, SPA Skateparks, in collaboration with New Line Skateparks took input from Conroe skaters and the local community to develop this unique and innovative design for the Kasmiersky Park Wheeled Sports Plaza. The skatepark will feature integral color concrete, integrated lighting and special viewing areas amongst an exciting collection of street elements, bowl units, and custom sculptural obstacles that reference various local landmarks as well as the rich forestry/timber and rail-way history of the Piney Woods area.

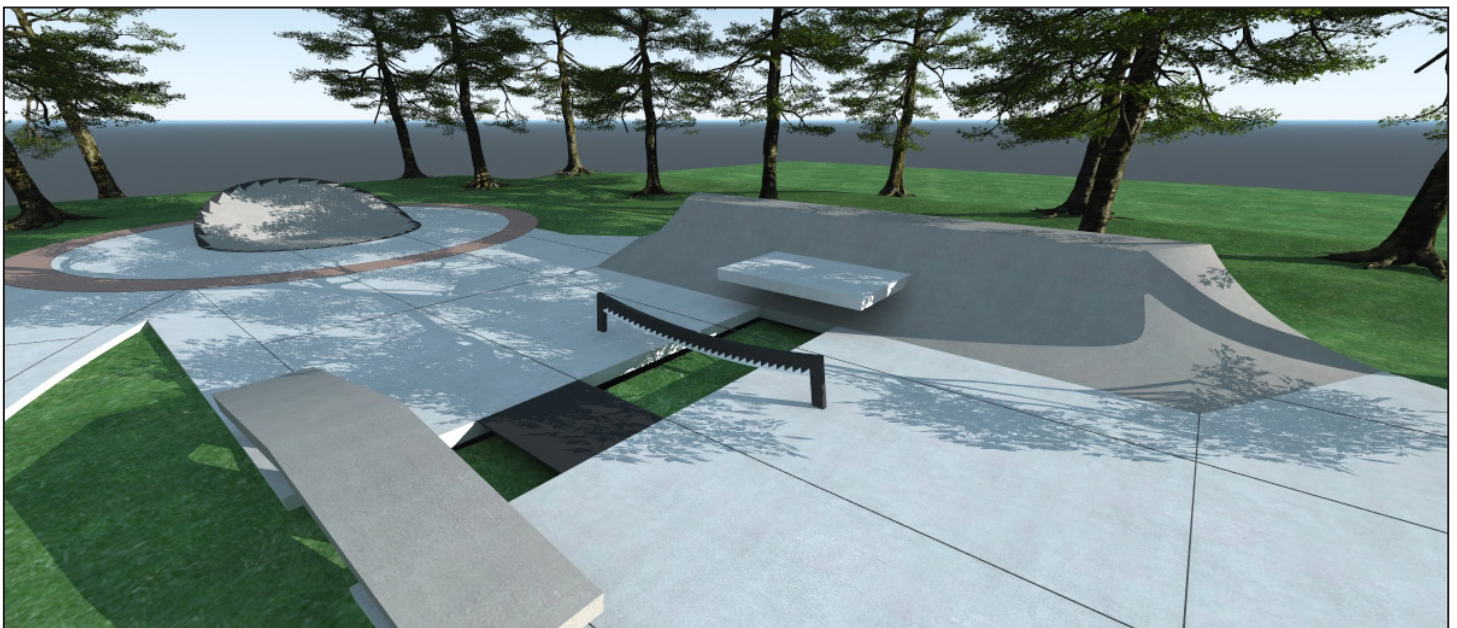
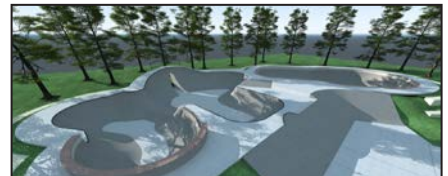
**Project Budget:** \$650,000

**Timeline:** Summer 2011 - Spring 2012

**Client:** City of Conroe

**Team Responsibilities:**

- site analysis
- conceptual and final design
- full construction





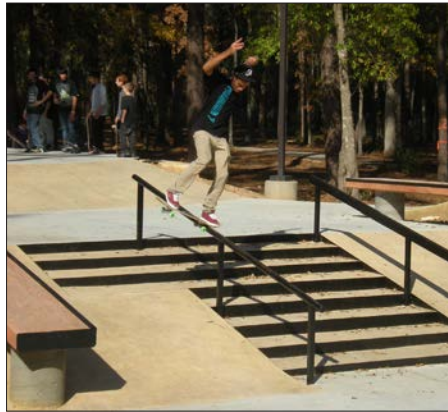


**NEWLINE**  
SKATEPARKS

WITH

**SPA** SKATEPARKS

## Kasmiersky Park All Wheel Plaza - Continued...







**NEWLINE**  
SKATEPARKS

WITH

**SPA** SKATEPARKS

**Granbury Skate Plaza** Granbury, TX  
Neighborhood Park

At approximately 6,000 square feet, and for all ages and skill levels, the Granbury skate park design takes the general shape of a triangle, consisting of three plaza lanes and a fully encapsulated bowl. The center of the triangle is a large landscaped area, breaking up what would otherwise be an expanse of concrete. The plaza elements include several rails and ledges, a 4 stair set, bank to bank, quarter pipe, and a unique Granbury-themed skateable signage feature closest to the parking lot. The profile of the signage symbolizes the mesa locally named Comanche Peak. Just a few miles from Granbury, this peak is the highest in Hood County and was the meeting ground for Comanche Indians. The words "Granbury Skate Park Dedicated to Keith W. Callahan" on the sign facing the parking lot is a show of thanks for Mr. Callahan's many years as the City's Director of City Services.

The skatepark bowl has three pockets with depths from 3.5 feet to 5.5 feet. The metal skate park coping blends into concrete at the shallow section, allowing skaters to roll in to begin their runs. The skate park is connected to the existing walking path that encircles Granbury City Park, allowing skaters easy and safe access.

**Project Budget:** ~ \$300,000 (each phase)

**Timeline:** Summer 2013 (phase 1), Summer 2015 (phase 2)

**Client:** City of Granbury

**Team Responsibilities:**

- site analysis
- conceptual and final design
- full construction services







**NEWLINE**  
SKATEPARKS

WITH

**SPA** SKATEPARKS

**Boerne Skate Plaza** Boerne, TX  
Community Park

*The Boerne Skate Plaza features approximately 14,000 sqft of custom skateable terrain split within 3 distinct zones: Plaza, Fun Track, and Bowl Complex. With a visual pattern reminiscent of the patch work of a quilt, the plaza area offers a multitude of unique street skating features inspired by the rectilinear forms found within the natural urban environment. This is contrasted by the flowing organic lines seen within the clover bowl and fun track that reference the City's famed Ciblow River. The entire development is finished with a selection of viewing areas and internal green islands designed to provide a pleasant and subtle integration with the surrounding site area.*

**Project Budget:** ~ \$300,000

**Timeline:** Spring 2009 - Fall 2009

**Client:** City of Boerne

**Team Responsibilities:**

- site analysis and public process
- conceptual and final design
- construction







**NEWLINE**  
SKATEPARKS

WITH

**SPA** SKATEPARKS

**Beautiful Mountain Skate Plaza** *Beaumont, TX*  
Neighborhood Park

*SPA / New Line proudly presents the Beautiful Mountain Skate Plaza - located at the City of Beaumont's downtown intersection of Laurel Ave and Magnolia St. The distinctive circular plaza design features a wide selection of versatile urban terrain elements derived from architectural cues found within the adjacent city Events Center Campus and a series of input meetings with local skateboarders and surrounding community members. Since opening, the Plaza has proven to be hugely popular with not only skateboarders, but a greater community of downtown residents and visitors who share Beaumont's evolving urban landscape!*

**Project Budget:** \$400,000

**Timeline:** Summer 2013

**Client:** City of Beaumont

**Team Responsibilities:**

- site analysis
- conceptual and final design
- full construction services







**NEWLINE**  
SKATEPARKS

WITH

**SPA** SKATEPARKS

**Cedar Park Skate Plaza** Cedar Park, TX  
Community Park

Located in the newly developed Brushy Creek Sports Park, the Cedar Park Skate Plaza offers a variety of modern plaza and bowl terrain woven seamlessly into the site's natural surroundings. The final design program was developed over a period of 4 months after an extensive outreach initiative with the public and key stakeholders from the local skate community. The result is a highly integrated skate facility that provides a distinct sense of place for local youth (and the young at heart) while also serving as an inviting destination for all park visitors.

**Project Budget:** \$450,000

**Timeline:** Spring 2009 - Fall 2009

**Client:** City of Cedar Park

**Team Responsibilities:**

- site analysis and public process
- park programming
- conceptual and final design
- full construction







**NEWLINE**  
SKATEPARKS

WITH

**SPA** SKATEPARKS

## **Ruben Pier Skate Plaza - Odessa** Odessa, TX *Community Park*

*The long anticipated Ruben Pier Skate Plaza is now a reality for the growing community of Odessa. Located within the City's expansive Sherwood Park, the Plaza was designed to not only provide local skateboarders with a safe and compelling environment to call their own but to also serve as a place to engage the entire community in the celebration of youth and the life of local skateboarder, Ruben Pier. Along with an assortment of unique 'real street' elements and a one of a kind stand alone bowl unit, the plaza features a combination of locally inspired sculptural features, integrated natural 'green' islands, shaded viewing areas, and a marquee skateable entry sign recognizing the Plaza's namesake.*

**Project Budget:** \$355,000

**Timeline:** Spring 2009 - Fall 2009

**Client:** City of Odessa

### **Team Responsibilities:**

- site analysis and public process
- conceptual and final design
- full construction







**NEWLINE**  
SKATEPARKS

WITH

**SPA** SKATEPARKS

## **Seguin MTR Skatepark** *Seguin, TX* *Community Park*

*The highly anticipated Michael Thomas Raetzsch (MTR) Skatepark in Seguin, Texas has received rave reviews from local skaters and the greater region. Located only minutes from San Antonio, New Braunfels and San Marcos, the City of Seguin's MTR Skatepark will most certainly become a regular stop for Texas skaters.*

*The MTR Skatepark consists of a main line connected by three octagonal plaza areas. On both ends, and caddy corner from each other, are two more elevated octagonal areas. The result is a street skater's dream. Designed for all ages and skill levels, skatepark features include multiple stair cases, down and flat rails, London and China Bank type gaps, boulder detailed ledges, and banked and transitional walls just to name a few. The park's namesake is dominantly installed on the outside of a banked skate feature facing the park's entry.*

**Timeline:** Summer 2015

**Client:** City of Seguin

### **Team Responsibilities:**

- site analysis
- conceptual and final design
- construction







**NEWLINE**  
SKATEPARKS

WITH

**SPA** SKATEPARKS

**Alvin Skatepark** Alvin, TX  
*Neighborhood Park*

*Boasting over 6,000 square feet of modern plaza and transitional terrain, the Alvin Skatepark truly represents a site-tailored facility that enhances an already-popular City park. SPA/New Line responded to the City's vision of creating a safe, sanctioned skateboarding/wheeled sports venue that would integrate with an established passive green space, children's playscape, performance area, and picnic shelter. This includes the implementation of 'skateable' seating/site furnishings, central 'green' area, and architectural detailing that references the colors and signage found in the park's historic rail-way building. Now open, the park serves as one of the area's most popular community recreation attractions.*

**Project Budget:** \$250,000

**Timeline:** Fall 2011 - May 2012

**Client:** City of Alvin,

**Team Responsibilities:**

- site analysis
- conceptual and final design
- full construction







**NEWLINE**  
SKATEPARKS

WITH

**SPA** SKATEPARKS

## **Texas City Skatepark** *Texas City, TX* Neighborhood Park

Located in the heart of Nessler Park, the Texas City Skatepark epitomizes the design-build skate park process. Our services began by assisting the City with site selection. Alongside Parks Department staff, an identified list of potential skatepark sites was analyzed and scored based on a list of factors including, but not limited to, existing on-site amenities and community accessibility. Next, skaters and other community members presented their preferences for skate features and other site-contextual items through a series of interactive design workshops led by our principal staff. The approved final design was then constructed by our team in accordance with the previously established upset contract budget established by the City.

The resulting ~ 8,000 sqft skatepark includes a host of key 'street' skating elements such as rails, stairs, quarter pipes and ledges, but also a number of signature features referencing Texas City's aviation and nautical history. Terra-cotta and beige integral colored concrete finish-off the facility to match the neighboring City High School's colors. A system of walking trails, a basketball court and baseball field, and a recently renovated state-of-the-art water park all reside in the surrounding area. The greater site also holds a collection of mature oak trees that provide excellent shade in the Summer months and served to inform our "L" shaped facility layout.

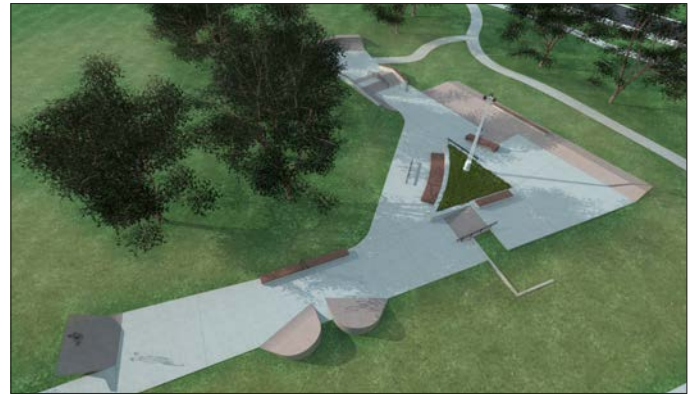
**Project Budget:** ~\$300,000

**Timeline:** Summer 2013

**Client:** City of Texas City

### **Team Responsibilities:**

- site analysis
- conceptual and final design
- full construction services





## NE Metro Skatepark Pflugerville, TX

### Destination Park

Travis County's new destination skatepark serves as the highlight of the third and final phase of the area's widely popular NE Metro Regional Park. With approximately 30,000 sqft of highly detailed skateable terrain spread across nearly an acre of green space, the park offers a full spectrum skateboarding/bmx experience in an inviting natural setting characteristic of the Blackland Prairie region.

**Timeline:** Summer 2009 - Summer 2012

**Client:** Travis County

**Budget:** ~\$1,500,000

#### Team Responsibilities

- site analysis
- public process
- conceptual design
- final design





**NE Metro Skatepark - Continued...**





## House Park Plaza *Austin, TX* *Destination Park*

After years of lobbying and planning, the City of Austin is now home to the state's premier downtown plaza and bowl complex. Through a series of interactive workshops with Austin's diverse skate and BMX community, a final design program was developed to include a near full spectrum of terrain types, integrated socializing/viewing areas, and an art/sculpture theme centered on the City's iconic live music reputation.

**Project Budget:** ~ \$1,200,000

**Timeline:** Jan 2008 - May 2011

**Client:** City of Austin

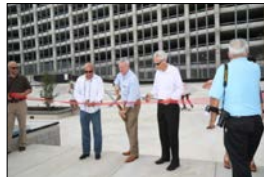
### Team Responsibilities:

- site analysis and public process
- conceptual and final design
- contract administration





## House Park Plaza - Continued...







# GARLAND

TEXAS MADE HERE

June 6, 2022

Re: Recommendation letter for SPA Skateparks

To whom it may concern,

I am pleased to offer this letter of reference for SPA Skateparks. Yann Curtis and his team recently completed construction of the first skate park in Garland. The new park is 46,000 square feet in size and constructed entirely of concrete and metal. The project was delivered with professionalism and excellence throughout the entire process, and I highly recommend working with their team.

I served as the project manager for the City of Garland and oversaw the project throughout all phases of work. The project had a strict deadline and budget, and it was completed ahead of schedule and on budget. The skate park is located within a larger redevelopment project in Rick Oden Park, and they coordinated seamlessly with multiple consultants and contractors to ensure the project accomplished the overall vision of the park development.

As the first skate park in the city, the project was faced with political challenges that Yann addressed professionally and knowledgeably. He helped communicate with the local community to educate about skate parks and the benefits they provide the public. During community outreach, we held several public meetings to garner feedback about desired features so the future users of the park could select what was most important to them. Yann and his team was able to skillfully extract that feedback from the public, and the outcome resulted with a blend of skate features that creatively interact with each other within the overall footprint of the skate park.

I was also impressed by the craftsmanship and detailed work of the installation team. Each member of the team was qualified and played an important role during construction. The team worked harmoniously and was dedicated to producing an excellent product. The construction superintendent was knowledgeable and had an excellent overall understanding of the site and expertly ensured the skate park achieved the vision of the design team.

Please feel free to contact me directly should you have any questions.

Sincerely,

Ziad Kharrat, RLA, MPA  
Special Projects Administrator  
Parks, Recreation and Cultural Arts Department  
City of Garland  
Email: [ZKharrat@garlandtx.gov](mailto:ZKharrat@garlandtx.gov)  
Phone: 972-205-2756



June 8, 2022

Re: SPA Skateparks

To whom it may concern,

It is with great pleasure that I write to recommend SPA Skateparks – New Line Skateparks. I served in the capacity of Project Manager for the City of Plano Parks and Recreation for the design and construction of the Carpenter Park Skate Park. This is our first skatepark, featuring both plaza and bowl experiences. SPA's long experience in designing and building skateparks, attention to detail and craft have made this a beautiful and much loved park.

The project was part of a larger renovation of the ballfields and drainage channel in Carpenter Park with quite a few community outreach meetings in the beginning of the design process. The team's experience with public engagement and calm, professional demeanor really helped to shepherd the project through the meetings. With the many other improvements planned for the park, there were many layers of coordination and detailed communication required in the plans and during construction. SPA was professional and responsive throughout. They kept to the project schedule and the budget throughout the process.

You're welcome to call me to discuss further at 972-941-7532.

Sincerely,

  
Elizabeth Del Turco  
Senior Park Planner





October 25, 2013

Jamie Curtis, President  
SPA Skateparks  
2310 Rogge Lane  
Austin, TX 78723

Re: Beautiful Mountain Skate Plaza  
Beaumont, TX

Dear Jamie,

Since the Grand Opening of our new skate plaza in August, dozens of skaters are onsite daily to experience the great design and quality of Beaumont's one and only skate plaza. You and your team listened to the local skaters and developed a skating plaza that incorporated everything they wanted within our budget.

It was a pleasure working with you and your team. Your commitment to make sure that every aspect of the project met your standards of quality and your attention to detail resulted in a one of a kind skateable streetscape far exceeding our expectations.

We thank you for your professionalism and look forward to working with you again in the future.

Sincerely

A handwritten signature in blue ink that reads "Brenda Beadle". The signature is fluid and cursive, with the first name "Brenda" and last name "Beadle" clearly distinguishable.

Brenda Beadle  
Capital Projects Manager





October 16, 2017

Project Management Team  
SPA Skateparks, Inc.  
2310 Rogge Lane  
Austin, Texas 78723

RE: Northeast Community Park Skate Park

Gentlemen,

On behalf of the City of Frisco Parks & Recreation Department, I would like to thank you all for your tremendous effort and hard work on the Northeast Community Skate Park. The project was a very successful project that was delivered on time and within budget. The construction methodology and meticulous details exceeded our expectations and helped this project truly shine. The residents of Frisco and visitors from the surrounding Metroplex have been raving about this wonderful skate park. This project could not have been as successful without the level of commitment and effort from SPA Skateparks.

The project team's communication and foresight kept the project on track without any major delays. They were able to showcase their ingenuity by proposing alternative construction methods on Frisco's signature piece within the park. Due to their dedication to deliver above and beyond, and excellent craftsmanship, our park now displays a 16 foot tall concrete wave. Their hard work and dedication can be seen anywhere throughout our 47,000 square foot park. We thank SPA Skateparks for the tremendous job they were deliver here in Frisco, and we look forward to future opportunities.

Sincerely,

Shannon Keleher  
Director of Parks & Recreation  
City of Frisco Texas





May 16, 2013

SPA Skateparks  
Attn: Mr. Curtis  
1301 Orlando Road  
Austin, TX 78733

Dear Mr. Curtis:

With our recently completed project, I wanted to thank you for the professional manner in which your company performed its responsibilities relative to design and construction. The city had significant ambition and expectations related to this project and your team consolidated that direction into a cohesive and tremendous asset for our community.

This was the city's first skatepark; therefore, the level of city staff experience with these types of facilities was limited. The level of expertise and education imparted by the SPA Skatepark staff was crucial in getting the city staff comfortable with and conversant on the intricacies of skatepark utility.

As we progressed into the actual construction, our assessment of SPA Skateparks' competency increased. The level of pride and craftsmanship was evident on a daily basis with our city staff project team marveling at the quality of the steel work. Staff comments including, 'work of art', 'these guys should expand their business to include large commercial sculptures', and 'what great attention to detail' were often overheard.

We are proud of the significant resource that McKinney now has and confident that any other community that chooses SPA Skateparks will be equally impressed.

Regards,

Lemuel P. Randolph  
Director  
Parks, Recreation and Open Space  
City of McKinney, Texas

**Parks, Recreation and Open Space**

P.O. Box 517 • McKinney, Texas 75070 • Metro 972-562-6080





*Parks and Recreation  
Department*

## CITY OF CONROE

---

March 6, 2012

Yann Curtis  
SPA Skateparks  
2310 Rogge Ln.  
Austin, TX 78723

Re: City of Conroe  
Kasmiersky Park  
Wheeled Sports Plaza

Dear Yann:

I want to thank you, Jamie and your team for providing a quality product regarding the phenomenal new Wheeled Sports Plaza at Kasmiersky Park. I was very pleased with the cooperation between SPA, Burditt, and the City. The project was completed on time and within the construction budget. I also appreciate the "extras" your firm provided to ensure the City was satisfied with the end product.

I look forward to SPA Skateparks bidding on future projects. Please don't hesitate to use me as a reference for future projects.

Sincerely,

Mike Riggins  
Director of Parks and Recreation



# CITY OF TEXAS CITY, TEXAS

---

DEPARTMENT OF RECREATION & TOURISM • OFFICE: (409) 643-5990 • FAX: (409) 949-4810



Mayor:  
Matthew T. Doyle

Commissioners:  
Mike Land  
Dee Ann Haney  
Thelma Bowie  
Phil Roberts  
Dedrick D. Johnson, Sr.  
Rick Wilkenfeld

May 5, 2014

To whom it may concern:

It is my pleasure to offer this letter of recommendation on behalf of SPA Skateparks for their design and construction work for our Texas City Skate Park.

During the course of a twelve month process, SPA Skateparks brought its professional team to Texas City to help us determine a process to receive input from our youth citizens on determining their desires on various design features. This process included public workshops and written feedback on design features, which resulted in a uniquely designed skate park that compliments the natural beauty of an existing park. The Construction Management of the project was well coordinated by their superintendent who worked with a well skilled work crew.

I cannot emphasize enough the overall professionalism that SPA Skateparks have demonstrated throughout this process have been exemplary.

I highly recommend SPA Skateparks for any future skate park project that you may be considering. Should you have any questions or need additional information, please do not hesitate to contact me at 409-949-3030.

Sincerely,

Dennis J. Harris, Co-Director  
City of Texas City  
Parks, Recreation & Tourism

*"QPS - Quality Public Service"*





June 30, 2010

Project Management Team  
SPA Skateparks, Inc.  
2310 Rogge Lane  
Austin, Texas 78723


Re: Cedar Park Skate Park Project

Gentlemen:

On behalf of the City of Cedar Park - Parks & Recreation Department, I would like to take this opportunity to congratulate you on the completion of a very successful project. SPA Skateparks has certainly exceeded our expectations by delivering the project on time, within budget and with a wow factor that has everyone in the community talking about it! SPA Skateparks is also to be commended for their unyielding commitment to safety and the very impressive safety record with this project.

Throughout the project, the positive attitude, communication and teamwork from the SPA Team allowed us to meet the challenges presented and to ultimately have a new 15,000 square foot Skate Park that the community can take pride in for many years to come. We thank you all for the professionalism and enthusiasm shown during this project and look forward to the next project opportunity with SPA Skateparks.

Sincerely,

  
Curt Randa, Director  
Parks & Recreation Department  
Cedar Park, Texas, 78613





# City of Austin

Parks and Recreation Department  
200 South Lamar Blvd, Austin, TX 78704

November 5, 2012

To Whom It May Concern:

In 2007, the City of Austin engaged New Line Skateparks, Inc. to design a world-class skate and BMX plaza and bowl complex within the city's urban core. The project included a complex site area, significant budget, and high expectations from local user-groups, City staff, and political constituents.

From start to finish New Line provided responsive, professional service that balanced budget limits and important urban design guidelines with the desires of the local skateboarding/BMX community as well as other citizens and visitors who share Austin's vibrant downtown area. New Line's ability to effectively engage the community and translate their input into the final design was especially impressive and the resulting completed facility is exceptional in terms of creativity, functionality, and overall quality.

It was a pleasure to work with the New Line Skateparks team and I would highly recommend their services to other communities.

Sincerely,

Gary Gregson

Project Coordinator

Austin Parks and Recreation

919 West 28½ Street

Austin, Texas 78705

Phone: (512) 974-9475

E-mail: [gary.gregson@austintexas.gov](mailto:gary.gregson@austintexas.gov)

## ADDITIONAL REFERENCES...

City of Fort Worth Fire Station Dickie's Skate Park  
Location: 1601 Lipscomb Street, Fort Worth 76104  
Owner: City of Fort Worth  
Consultant: New Line Skateparks. Kyle Dion 604 908 7171  
Size: 18,000 sf  
Completed: CURRENT

City of Port Lavaca Skate Park  
Location: 826 Seadrift St, Port Lavaca, TX 77979  
Owner: City of Port Lavaca  
Consultant: New Line Skateparks. Kyle Dion 604 908 7171  
Size: 5,000 sf  
Completed: June 2022

City of Lake Jackson Skate Park  
Location: 91 Lake Rd Lake Jackson, Texas 77566  
Owner: City of Lake Jackson  
Consultant: New Line Skateparks. Kyle Dion 604 908 7171  
Size: 8,500 sf  
Completed: May 2022

City of Austin's Mueller Gaylord Sackler Memorial Skate Park & Pump Track  
Location: 3730 Manor Rd, Austin, TX 78723  
Owner: Catellus Development  
Consultant: New Line Skateparks. Kyle Dion 604 908 7171  
Size: 15,500 sf  
Completed: April 2022

City of Garland Rick Oden Skate Park  
Location: 968 W. Miller Rd. Garland, Texas 75041  
Owner: City of Garland, Texas  
Consultant: New Line Skateparks. Kyle Dion 604 908 7171  
Size: 46,000 sf  
Completed: December 2021

City of Fort Worth Chisholm Trail Skate Park – Phase 2  
Location: 4680 McPherson Blvd Ft Worth 76123  
Owner: City of Fort Worth  
Consultant: New Line Skateparks. Kyle Dion 604 908 7171  
Size: 11,000 sf  
Completed: January 2021



City of Oklahoma City Manuel Perez Park Improvements (Mat Hoffman Action Sports Park)

Location: 1700 S Robinson Ave, Oklahoma City, OK 73109

Owner: City of Oklahoma City, Oklahoma

Consultant: New Line Skateparks. Kyle Dion 604 908 7171

Size: 5,500 sf

Completed: 7/24/20

City of Kenedy Escondido Creek Parkway Skate Park

Location: 10202 International Blvd, Laredo, TX 78045

Owner: City of Kenedy, Texas / San Antonio River Authority

Consultant: New Line Skateparks. Kyle Dion 604 908 7171

Size: 4,000 sf

Completed: 4/23/20

City of Laredo Texas John Valls / North Central Skate Park

Location: 10202 International Blvd, Laredo, TX 78045

Owner: City of Laredo, Texas

Consultant: New Line Skateparks. Kyle Dion 604 908 7171

Size: 5,200 sf

Completed: January 2020

City of Leander Lakewood Skate Park

Location: 10870 E Crystal Falls Pkwy, Leander, TX 78641

Owner: City of Leander, TX

Consultant: New Line Skateparks. Kyle Dion 604 908 7171

Size: 6,250 sf

Completed: 10/4/2019

City of Arlington Texas Webb Community Skate Park

Location: Webb Community Skate Park. 1100 Mansfield Webb Rd. Arlington, TX 76002

Owner: City of Arlington, Texas

Consultant: New Line Skateparks. Kyle Dion 604 908 7171

Size: 5,000 sf

Completed: July 2019

City of Tyler Texas Faulkner Skate Park

Location: Faulkner Park. 410 W Cumberland Rd. Tyler, TX 75703

Owner: City of Tyler, Texas

Consultant: New Line Skateparks. Kyle Dion 604 908 7171

Size: 3,900 sf

Completed: May 2019

City of Missouri City Texas Community Skate Park (Design)

Location: Community Park. 1700 Glenn Lakes Ln. Missouri City, TX 77459

Owner: City of Missouri City, Texas

Consultant: New Line Skateparks. Kyle Dion 604 908 7171

Size: 5,000 sf

Completed: March 2019

City of Pharr Victor Garcia Municipal Skate Park

Location: Victor Garcia Municipal Skate Park. 205 W Polk Ave. Pharr, TX 78577

Owner: City of Pharr, Texas

Consultant: New Line Skateparks. Kyle Dion 604 908 7171

Size: 5,250 sf

Completed: December 2018

City of Sherman Texas Hawn Park Skate Park

Location: Hawn Park. 902 S Dewey Ave. Sherman, TX 75090

Owner: City of Sherman, Texas

Consultant: New Line Skateparks. Kyle Dion 604 908 7171

Size: 4,500 sf

Completed: September 2018

Wells Branch MUD Skate Park (Austin Texas)

Location: Recreation Center Skate Park. 3000 Shoreline Dr. Austin, TX 78728

Owner: Wells Branch Municipal Utility District

Consultant: New Line Skateparks. Kyle Dion 604 908 7171

Size: 7,400 sf

Completed: July 2018

City of Plano Texas Carpenter Skate Park

Location: Carpenter Park Skate Park. 6701 Coit Rd. Plano, Texas 75024

Owner: City of Plano, Texas.

Consultant: New Line Skateparks. Kyle Dion 604 908 7171

Size: 22,000 sf

Completed: April 2018

City of Kingsville Texas Brookshire Park Skate Park

Location: Brookshire #2 Park Skatepark. 1519 E Kenedy Ave. Kingsville, TX 78363

Owner: City of Kingsville, Texas.

Consultant: New Line Skateparks. Kyle Dion 604 908 7171

Size: 5,500 sf

Completed: September 2017

City of Mansfield Texas Chandler Park Skate Spot

Location: Clayton W Chandler Park. 1530 North Walnut Creek Drive. Mansfield, TX 76063

Owner: City of Mansfield, Texas.

Consultant: New Line Skateparks. Kyle Dion 604 908 7171

Size: 4,5000 sf

Completed: June 2017

City of Frisco Northeast Community Park - Skatepark

Location: NE Community Park. Honey Grove Dr and Panther Creek Parkway Frisco, TX 75035

Owner: City of Frisco, Texas.

Consultant: New Line Skateparks. Kyle Dion 604 908 7171

Size: 46,000 sf

Completed: May 2017



City of Live Oak Skate Spot

Location: Live Oak City Park 18001 Park Dr, Live Oak, TX 78233

Owner: City of Live Oak

Consultant: New Line Skateparks. Kyle Dion 604 908 7171

Size: 3,500 sf

Completed: July to August 2016

City of Fort Worth Chisholm Trail Community Park – Skatepark

Location: 4680 McPherson Blvd Ft Worth 76123

Owner: City of Fort Worth

Consultant: New Line Skateparks. Kyle Dion 604 908 7171

Size: 16,500 sf

Completed: March 2016

City of Seguin MTR Skatepark

Location: Vaughn Ave and San Antonio, Seguin, Texas 78155

Owner: City of Seguin, Texas.

Consultant: New Line Skateparks. Kyle Dion 604 908 7171

Size: 10,800sf

Completed: February to June 2015

City of Watauga

Location: 7901 Indian Springs Rd Watauga, Texas 76148

Owner: City of Watauga, Texas.

Consultant: New Line Skateparks. Kyle Dion 604 908 7171

Size: 5,228 sf

Completed: January – March 2015

City of Roanoke Skate Park

Location: NE corner of SH 114 and Cannon Parkway, Roanoke Texas

Owner: City of Roanoke, Texas.

Consultant: New Line Skateparks. Kyle Dion 604 908 7171

Size: 19,600 sf

Completed: August 2014 to January 2015

City of Granbury Skate Park

Location: 840 Community Circle Schertz, Texas 78154

Owner: City of Granbury, Texas. Aaron McLain 817-243-2068 116 W. Bridge St. Granbury, TX 76048

Consultant: New Line Skateparks. Kyle Dion 604 908 7171

Size: 6,000

Completed: 5/15/14

City of Schertz Skate Park

Location: 840 Community Circle Schertz, Texas 78154

Owner: City of Schertz, Texas. Chuck VanZandt 210-619-1851. 1400 Schertz Pkwy Schertz, TX 78154

Consultant: New Line Skateparks. Kyle Dion 604 908 7171

Size: 4,500 sf

City of Arlington Vandergriff Skate Park

Location: 2800 South Center St Arlington, Texas 76014

Owner: City of Arlington, Texas. Jason Landrem 817-459-5489 717 W. Main Street Arlington, TX 76013

Consultant: New Line Skateparks. Kyle Dion 604 908 7171

Size: 20,993 sf

Completed: 3/18/2014

City of Texas City Skate Park

Location: Girl Scout Lane and Phoenix Lane Texas City, Texas 77590

Consultant: New Line Skateparks. Kyle Dion 604 908 7171

Size: 8,000 sf

Completed: 9/16/2013

Vogel Creek Improvements Project – Skate Park

Location: Bauerlein Dr. and Smiling Wood Ln. Houston, Texas 77086

Owner: Harris County Water Control & Improvement District #133

Consultant: New Line Skateparks. Kyle Dion 604 908 7171

Size: 3,000 sf

Completed: 4/15/2013

City of Beaumont Beautiful Mountain Skate Plaza

Location: Magnolia Street and Laurel Avenue Beaumont, Texas 77701

Owner: City of Beaumont, Texas.

Consultant: New Line Skateparks. Kyle Dion 604 908 7171

Size: 10,000 sf

Completed: 7/10/2013

City of McKinney Gabe Nesbitt Skate Park

Location: 7001 W Eldorado Parkway McKinney, Texas 75070

Owner: City of McKinney. Ryan Mullins 972-547-7480

Consultant: New Line Skateparks. Kyle Dion 604 908 7171

Size: 28,750 sf

Completed: 3/15/2013

City of Beeville Skate Park

Location: Flournoy Park Beeville, TX 78102

Owner: City of Beeville. Fred Diaz 361-358-4641 ext. 241

Consultant: New Line Skateparks. Kyle Dion 604 908 7171

Size: 5,500 sf

Completed: 7/27/2012

City of Alvin Skate Park

Location: 118 South Magnolia Street Alvin, Texas 77511

Consultant: New Line Skateparks. Kyle Dion 604 908 7171

Size: 6,500 sf

Completed: 6/5/2012



City of Conroe Kasmiersky Wheeled Sports Plaza  
Location: 889 Old Magnolia Rd. Conroe, Texas 77304  
Owner: City of Conroe. Mike Riggins 936-522-3842  
Consultant: New Line Skateparks. Kyle Dion 604 908 7171  
Size: 15,000 sf  
Completed: 12/16/2011

City of College Station Garrett Hysmith Skate Park  
Location: 1520 Rock Prairie Road College Station, Texas 77840  
Owner: City of College Station. Edward McDonald 979-764-3528  
Size: 15,500 sf  
Completed: 8/2/2011

City of Flatonia Skate Park  
Location: 111 Garbade Lane Flatonia, Texas 78941  
Owner: City of Flatonia.  
Consultant: SPA Skateparks. Jamie Curtis 512 736 5008  
Size: 3,500 sf  
Completed: 3/21/2011

City of Floresville Skate Park  
Location: 6th Street and A Street Floresville, Texas 78114  
Owner: Floresville EDC.  
Consultant: SPA Skateparks. Jamie Curtis 512 736 5008  
Size: 5,000 sf  
Completed: 9/22/2010

City of Boerne Skate Park  
Location: 524 Adler Street Boerne, Texas 78006  
Owner: City of Boerne  
Consultant: New Line Skateparks. Kyle Dion 604 908 7171  
Size: 8,300 sf  
Completed: 6/21/2010

City of Cedar Park Brushy Creek Skate Park  
Location: 2310 Brushy Creek Road Cedar Park, Texas 78613  
Owner: City of Cedar Park  
Consultant: New Line Skateparks. Kyle Dion 604 908 7171  
Size: 9,011 sf  
Completed: 8/31/2009

City of Odessa Skate Park

Location: 4819 North Everglade Odessa, Texas 79762

Owner: City of Odessa

Consultant: New Line Skateparks. Kyle Dion 604 908 7171

Size: 13,000 sf

Completed: 7/15/2009

City of New Braunfels Jaws Skate Park

Location: South Grape Avenue & Spur Street New Braunfels, Texas 78130

Owner: City of New Braunfels

Size: 15,000 sf

Completed: 5/1/2009

City of Victoria Skate Park

Location: 307 N Ben Wilson St Victoria, Texas 77901

Owner: City of Victoria

Size: 12,000 sf

Completed: 12/12/2008







# PROJECT UNDERSTANDING





## PROJECT UNDERSTANDING

The residents of Kyle have determined that an integrated, modern concrete skatepark would be a welcome addition to the City's parks network. Council and Staff have supported this project with designation of a site and commitment of facility funding. It is also understood that a local group of 'action sports' enthusiasts, community leaders and parents are standing by to provide creative input throughout the development process.

The overall location for the skatepark lies within the eastern half of Gregg Clarke Park - comprised of two potential development zones (existing tennis courts and/or deck shuffleboard area). Already a popular recreation destination for locals and visitors alike, Gregg Clarke Park features a number of leisure amenities and attractions prized by the community (ie. Kyle Pool, football and baseball fields, children's playscapes, walking paths, picnic shelters and seating areas). Thus introducing the new skatepark must enhance Gregg Clarke Park's greatest qualities as espoused by the location's various stakeholder groups and the guiding principles of the City of Kyle Parks, Trails and Open Space Master Plan. Key considerations in this vein will be ensuring the new skatepark design integrates tactfully with the surrounding multiuse areas and addresses the aesthetic, visibility, geotechnical, drainage, ADA accessibility, environmental sustainability, programming and operations/maintenance concerns (ie. lighting, programming, hours, garbage, graffiti policy etc.) of the City and surrounding park residents.



Views of the potential development sites and surrounding area - site review by Yann Curtis (Project Director) October 28, 2022. Ensuring a seamless integration with surrounding multiuse areas will be important considerations during the development process.

***Over the past 7 years, our design-build team has had ongoing communication with City Staff and members of the local skateboarding/wheeled sports community by way of correspondence through our company website, attendance at various conferences (ie. TML) and skatepark related events in the region, and numerous visits to the City of Kyle and Kyle Area Youth Advisory Council (KAYAC) to review the project site and assist with preliminary planning information.*** Based on this preliminary research, we understand that there are variety of user styles, disciplines and ability levels - each with their own unique technical requirements. Thus, we anticipate park terrain shall consist of a mixture of authentic modern street and transition/bowl features with an orientation towards beginner through advanced level users - *all to be confirmed through our in-depth community consultation process.* Design considerations shall also address the opportunity for users to grow and progress in their skills as well as take into account the park's ability to host demonstrations and competitive events. *Modern skateparks are amazing family facilities and great to watch, therefore, attention must also be given to safe pedestrian walkways, inviting viewing areas, lighting, shade, and art/sculptural installations (rideable and otherwise) that capture the 'story' of what makes the City of Kyle unique and special.*

A target development budget for the project has been set at between \$1,000,000 and \$1,200,000. As part of the development process the design-build team shall work with the Owner to establish an appropriate final upset budget that provides exceptional value for the community and ensures the completion of a thorough site analysis and community consultation program, creation of a 'gold star quality' concept design, completion of all working and as built drawings, and full construction responsibilities under a true-to-form lump sum design-build contract. The design-build team should also be prepared to support any ongoing project fundraising efforts through the production of timely design and detailed cost information that may be leveraged for grant applications and/or local funding / in-kind donations initiatives.

Finally, it is understood that the entire development process shall be undertaken in close collaboration with City representatives and all interested local youth and community members. These stakeholders must be respected, fully engaged in the development process, and intimately understood by the skatepark development team.



Above: Various planning and sample design resources created by our team to support the City of Kyle's and community's preliminary project feasibility / planning efforts. Ensuring continued meaningful involvement of the community throughout the design resolution process will be critical to the long term success of the project.







# OUR APPROACH





## OUR APPROACH



**1. Community Consultation:** Our experience has shown that active participation by youth and other members of the community throughout the development process will be critical to the long-term success of the project. For the new Kyle Skatepark, the call for stakeholder involvement will be equally important as there has been strong community interest in the project and the City is making a significant contribution of public land and financing.

Thus, our team will approach this project from a collaborative point of view. We will engage the community throughout the design journey and bring a professional, organized and fun attitude. We want youth and affected community members to truly feel that they are a part of the project solution and build lasting ownership in the final product.

The design-build team will meet with the City and local youth/community members through a series of design workshops and progress review meetings. These sessions will allow us to introduce our team, establish open lines of communication and determine the ultimate design vision for the project. If a stakeholder cannot attend one of our in person sessions, then we will encourage them to contact us through email or our custom web forum specifically created for this project. We will spare no resource to ensure that the experience of designing and building the skatepark is as rewarding as using the final product!

Undoubtedly, many issues often arise. Typically, we see the following main concerns voiced:

- User conflicts/park flow/skatepark program development
- Integration with site conditions
- Views from adjacent properties and facilities
- Noise reduction
- Park development/range of obstacles/features
- Accessibility to various skill levels, ages, and genders
- Structural considerations
- Graffiti management
- Lighting strategy
- Places for socializing
- Attractive and challenging 'hang-out space' for teens
- Parking
- Access to shelter, washrooms, food, water
- CPTED (crime prevention through environmental design)

To effectively address these and other areas in an efficient manner, it will be critical to have experienced and effective facilitators working with the diverse stakeholder groups. Meetings must be led by individuals who not only intimately understand the subtleties and nuances of skateboarding and youth concerns but who also can relate issues back to area residents, seniors, business owners, civic officials etc.

***Our team offers 4 individuals (Yann Curtis, Kyle Dion, Mark van der Zalm and Trevor Morgan) - each with 15 + years of individual experience working specifically in urban development and skatepark related planning.*** They will make certain all stakeholders first understand this unique project and then have an opportunity to be heard while keeping sessions productive and the project timeline 'on track'.





Part of our strategy will include using effective visual aids (color presentation panels, advanced 3D modeling, power point etc.) which illustrate examples and draw on information from numerous other concrete skatepark/plaza developments our team has completed across the nation. Although issues relating to this park will be truly unique to Kyle, there will be some consistency and overlap with communities that we have previously worked with (over 400 - over 40 in Texas). We see this as a major strength of our team. We will bring knowledge gained from similar skatepark projects throughout North America and Europe and apply where appropriate when working with project stakeholders.



Another key aspect of our approach will be keeping our working sessions highly interactive. In addition to 'airing out' important development issues through meaningful discussion, we encourage other types of 'hands on' involvement such as writing, sketching, and real time modeling of park ideas/elements alongside our team within the meetings. Outside of scheduled meetings, stakeholders will be once again invited to submit written comments, sketches, pictures etc. through our **custom web surveys** for immediate online feedback from our team. *For even further interaction, youth will be encouraged to assist our team in presenting concept plans and revised design renderings back to the community as the project progresses.*

Overall, engaging key stakeholders in a meaningful way early in the process will be a major key to the project's success. We will seek to gather endorsements in a logical order and work to identify and focus on common goals to bridge gaps between stakeholder groups. Moreover, by researching local issues ahead of time and utilizing empirical information gained from other skatepark/plaza projects we have completed, we will strive to preempt many of the contentious issues that arise from public misconceptions that often surround skatepark developments.

Based on our experience with similar projects, we propose conducting a minimum of 2 public design workshops / open houses and series of internal progress review meetings throughout the development program. This should provide ample opportunity to conduct an in-depth design development program and allow stakeholders to comment on and view the proposed final design. At each major meeting a combination of comprehensive hand sketches and 3D renderings will be used illustrate project details at different stages of development. This will in turn provide key stakeholders and the community with an accurate representation of how the skatepark will look and function within the approved site before moving forward to construction. For more details on each step of our consultation process, please see our methodology (beginning pg. 76)

**2. Context Considerations/Design Development:** Creating a fully integrated park design that not only provides world-class skateable terrain but also enhances the site and respects the surrounding community will be a key focus of our team. Gregg Clarke Park offers an excellent setting for the development truly compelling community skatepark. However, along with the many contextual opportunities that the location offers, several challenges may also arise that must be approached tactfully. Of significant importance will be working with the site's existing ground conditions, protection of natural environments during construction, and ensuring a tactful integration of the skatepark with the area's current and future (planned) surrounding multiuse areas.



**Soil Moisture Conditioning**  
Arlington Vandergriff Skatepark - Arlington, TX  
McKinney Skatepark - McKinney, TX



**Re-Use of Original Concrete Slab,  
Sub Base, and Drainage Structures**  
Ambleside BC Skatepark Replacement, Watauga TX Skatepark

**Geotechnical / Civil Works** - Our extensive concrete skatepark experience throughout Texas has shown that many sites can pose certain challenges to development due to the presence of variable ground/subsurface conditions that stem a variety of factors. ***Our team is well prepared for these type of challenges and has extensive experience designing and building over existing concrete foundations/slabs, contaminated sites, high water tables, flood plains and high-clay conditions throughout Texas.*** For each project's unique geotechnical and civil requirements, our team has employed an engineering process that draws on the skill and experience of our internal team engineers as well as the direction of registered geotechnical engineers and with first-hand knowledge and expertise of the specific community we're working within. This process begins with a review of existing site base/subsurface information with local geotechnical engineers and our own in-house design professionals. We will ensure engineers clearly understand the nature of proposed facility and then jointly develop our final grading and drainage, base prep, and fill details for the park. For the Kyle skatepark, our team will match a thorough understanding of geotechnical conditions and existing site infrastructure with our unparalleled local site-built concrete skatepark design-build capabilities.





Sand Filtration planters not only provide for green friendly water treatment but may serve as integrated skateable elements



Soil analysis for biofiltration area



Ecosmart Concrete over crushed recycled concrete sub base

**Sustainable Development** - Preserving nearby natural environments will also be critical when we develop our plans for the site. Relevant ecological initiatives, surrounding vegetation, and the comfort of nearby residents must be considered. Our team will ensure the park's design and construction documentation accounts for proper access of construction/maintenance traffic, proper treatment of storm water, tree protection, erosion and sediment control, and removal of unwanted materials in a way that minimizes undesirable impacts to the surrounding site area. We are proud to have introduced 'green drainage' systems on a number of our recent skatepark/plaza designs and continue to participate in Leadership in Energy and Environmental Design (LEED) certified projects throughout North America. We look forward to providing our experience in this increasingly important area for the Kyle Skatepark project. *Possible sustainable development options include, but are not limited to:*

- Explore opportunities for onsite treatment of storm water through skateable biofiltration and sand filtration planters within skatepark hard surface ('green' storm water management system).
- Source locally produced granite for ledge applications.
- Use of recycled steel in potential skateable sculptures.
- Use of 'green friendly' or EcoSmart concrete.
- Use of recycled concrete in sub-base materials.
- Recycling of wood forming materials used in project
- Designation of site as a no-idle zone when construction vehicles and machinery are on standby
- Avoid unnecessary document printing related to project and use recycled paper whenever possible



Our success in environmental leadership has been recognized by organizations across North America and Europe - most recently with a special feature in the New York times for the Ed Benedict Skate Plaza's 'skateable' green drainage design (see above)



Area Seniors capturing the action at a local skatepark

**Safe pedestrian walk ways and viewing areas** – Ensuring collisions/conflicts do not occur between skaters and casual visitors/bystanders will be important for setting the ‘tone’ for the park. Our team will work purposefully to design an overall layout and surface detail that will naturally direct activity to the appropriate areas without feeling contrived. We will ensure ample room for safe, unobstructed viewing and unfettered access around the entire skatepark area for the skater and non-skater alike. In this process, the entirety of the site area will be considered. Existing pathways and infrastructure will be analyzed, adjusted if needed, and tied into the final design for eventual construction. We are confident that if approached properly, the skatepark will provide a significant improvement in the overall accessibility and viewing opportunities of the overall development area.



Safe pedestrian pathways and custom site furnishings



Diverse colors, textures and integrated landscaping

Most importantly, the Kyle Skatepark should be a welcome destination for the entire City and provide a true ‘sense of place’ for the entire community. With this in mind, it is important to not overlook the non-active user. They too must be well integrated into the site - to feel comfortable sitting down, watching or slowly walking by. For the primary users (skateboarders), their activity often happens in bursts and is not a continuous endurance session. Much of the time users are watching, socializing, and waiting for a turn. Thus, focusing on the whole of the site area and design components beyond the function of the immediate hard surface will be critical. The following sections outline just a few elements that will be considered in this endeavor.

**Landscape and materials detailing** – focusing on the landscape design and materials detailing around the park will be important to a pleasant and subtle integration within the site. Our team will provide direction on green space forming and use of varied materials selections that create a vibrant and enduring setting. This will be balanced with our understanding of the construction budget, maintenance and usage realities of a high use public youth park. For the new Kyle Skatepark, special attention will be paid to utilizing a combination of local plant palette, pavers, steel and rock work options to create functional viewing, socializing and shade areas in sync with Gregg Clarke Park’s diverse surroundings and unique character.





Locally inspired skateable sculptures and art installations at the Plaza at the Forks, Thomas Haney Youth Park and UBC Skatepark

**Art integration** – With a movement for greater integration of youth culture and contemporary activities into mainstream society and public spaces, we are beginning to look at skateparks differently. The days of the typical ‘concrete square’ are quickly coming to an end as a new generation of increasingly holistic skatepark designs respond to far more than purely function. A major part of this new design vision includes introducing art installations within and around the skatepark/plaza development. Our team has had the opportunity to spearhead this concept in North American skatepark development and is excited with any opportunities the City of Kyle and local community may wish to pursue.

With a diverse site area, rich local culture and proud history, there will ample opportunities for both skateable sculptures and other artistic elements. Whether it be referencing the City’s historic railway stop roots or iconic Pie Capital of Texas motto, numerous ideas will surface for art installations that capture Kyle’s ‘spirit’ and ‘feel’. The challenge will lie in creating a program to identify and implement art features that fit the principles of the City’s planning guidelines as well as the unique elements of the project and its intended uses.

Our experience with the Plaza at the Forks in Winnipeg, MB is an excellent example of the integration of art and skate terrain. The design introduced locally created/inspired signature skateable sculptures and other art pieces from concept through completion into what would become a world-renowned public space. It was a process without precedent that has now given our team the unique advantage of understanding how to successfully work with local youth artists, choose submissions and oversee the transformation of artistic concepts to built installations that are both interesting and safe to skate. We have also acquired a keen understanding of the budget implications that come with each step in the process.



**Site Signage** – From recognizing project contributors to helping educating park visitors, signage may be an interesting item for the skatepark. Above are just a couple of examples of signage options from previous SPA/New Line projects that may serve as a base for this development. In many cases we have found great success with the use of highly durable concrete, granite/natural stone and steel materials combined with innovative molding and engraving techniques - all intended to be vandal resistant (through material impact density and graffiti abatement protection) and in most cases even rideable by skateboard, inline and BMX. Our team looks forward to presenting unique signage options for the City's consideration.



**Site Servicing / Lighting** – Site services engineering for any modern youth park is important and must be performed with consideration to future amenities as well as immediate usage requirements. For this project we understand that lighting/electrical may be a key service component implemented in the facility. *Our team is proud to have served as a pioneer in the development of skatepark specific photometric studies/plans.* From this, we have developed proven strategies to cost effectively implement optimal lighting programs in relation to specific user preferences, energy efficiency/conservation and neighborhood impact.

The challenge will be to develop a plan that meets the reality of future budget considerations and ultimately satisfies the desires of the City, park users and surrounding community. Our approach will be to communicate the basic available lighting choices, and provide a lighting strategy advice for execution at the City's discretion. This could range from simple low-level safety lighting (allowing for safe evening pedestrian navigation and security checks from nearby roadways) to artistic lighting elements and an advanced motion generated sport lighting system designed to accommodate full usage of the facility at any time. Whatever plan is chosen, it will be critical to consider the long term operation goals of the skatepark and ensure the initial scope of construction will accommodate any future installations.



**CPTED (crime prevention through environmental design)** – CPTED principles must be considered when approaching this important project. Throughout North America we have witnessed the tremendous effect planning in this area can yield. Our team will consult with project stakeholders in an attempt to identify any major crime issues in the area and design to help mitigate the chance of their presence in the new development. Our experience with the Downtown Vancouver Skate Plaza (see picture below) will prove invaluable as the creation of the facility resulted in a major decrease in illicit activity in a trouble-ridden location – a true skatepark/plaza success story!



**Graffiti** – hand in hand with CPTED principles are the common skatepark concerns of graffiti and facility visibility. Despite the challenges these issues can pose, they are being addressed successfully by communities through a combination of facility design techniques and park operating policies supported by the community. For graffiti, our team will work closely with the City of Kyle to explore an array of management techniques ranging from commissioned graffiti art programs to zero-tolerance policies involving mitigating graffiti through cover-up paint applications. We are proud to have consulted on some of the first successful community commissioned skatepark graffiti art programs while also leading the industry in identifying suitable 'cover-up' paint mixes and a surface-safe applied removal system for municipalities who have chosen to go graffiti free.



Professional Skateboarder, Anthony Hancock rides Cochrane's Bowl unit after a fresh coat of graffiti cover-up paint has been applied

Vic West Skatepark showcases graffiti art on select park panels. A community ran program was organized to select local youth artists for approved graffiti works throughout



**Park visibility** must also not be overlooked. As countless communities throughout the country attest, visibility is a key component to the success of a modern youth park. Projects that are open and highly visible generate interest and engagement from the community, while those that are hidden have proven to breed a host of social problems. Our team will take extra care to ensure available site lines are maintained in conjunction with the design of all concrete elements, land forming and planting.

**Park Accessibility / ADA Requirements** - ADA requirements must be considered when developing an inclusive public skateboarding facility. Our team is no stranger to designing to Texas State ADA requirements and has recently worked with State and Municipal ADA compliance officers for our Mueller, Wells Branch, McKinney, Arlington, and Roanoke Skateparks. This work has afforded us with an in-depth understanding of the most recent ADA regulations for the region, which we will utilize as a base for the project at hand. In addition to meeting minimum ADA requirements, our team looks forward to exploring creative design options that will allow for a more inclusive experience for disabled park visitors/users.



*Beyond ADA basics - park access inside and out for all wheeled sport enthusiasts*



**Park programming / Grand Opening Celebrations** – Recognizing how much community effort goes into a unique development such as a skatepark and how important it is to start things off ‘on the right foot’, our team also specializes in helping organize exciting grand opening celebrations and demonstrations at all of our creations. *With our strong relationships with high level amateur and professional skateboarders and their skate industry sponsors, we are able to help our clients deliver world class events that include premier skate talent and prizes for the community. This service is provided at no extra cost from our team and is one more way we demonstrate our commitment to ‘Building Skateboarding’ in Texas.*

Another key factor to maintaining a successful environment after the park is built lies in active programming of the facility. Whether it is onsite full time ‘skate hosts’ during the peak season or simply planning a couple of local demos or competitive events periodically, some level of programming will be critical. Our team is proud to have been instrumental in the creation of a number of park programming opportunities across North America including the landmark City of Calgary Shaw Millennium Park ‘Skate Host’ program and the Plaza at the Forks ‘Park Ambassadors’ program – both of which have proven extremely successful. We look forward to sharing our experience in this area to develop programming ideas with local youth and community for the Kyle Skatepark.

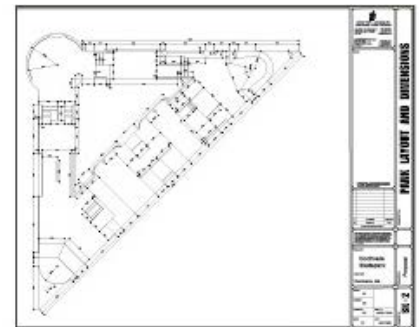
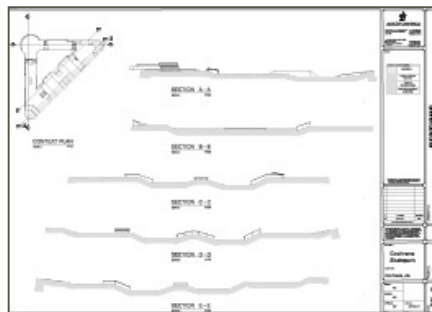
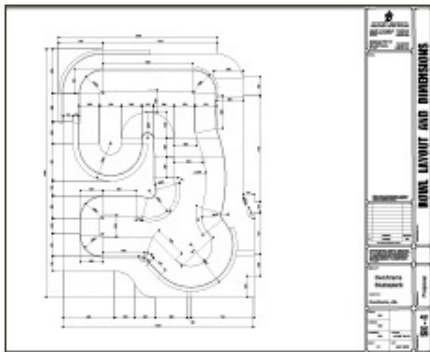
photos top to bottom (on left): Professional Skateboarders Jamie Thomas, Tony Hawk and Alex Chalmers at various ‘free entry’ grand openings / special events hosted at our team members’ designed and constructed parks.



**3. Technical Design and Working Drawings:** The technical drawings for this unique project will be of critical importance. Our team takes this task very seriously and we challenge ourselves to create informative, illustrative, and comprehensive drawing packages. Our goal is to eliminate all ambiguity in the project specifications to help ensure a very clear approval and construction process.

Our ability to deliver industry leading drawing packages stems largely from our experience from both a consultant and contractor's standpoint. SPA/New Line is one of the most experienced concrete skatepark specific design-build teams in the world. **Over the past decade we have built out a large proportion of our 300 + skatepark design projects through our own fully bonded and insured construction teams.** The constant exposure to both realms of project management allows us to quickly improve/refine our drawings and communication strategies in response to field problems/issues on an ongoing basis. Essentially, as we design we also understand intimately what it will take to execute in the field. This heightened knowledge allows us to stay on budget and deliver final designs as they were intended - not as near replicas. This is another competitive advantage of our team and a major reason for our award winning facilities.

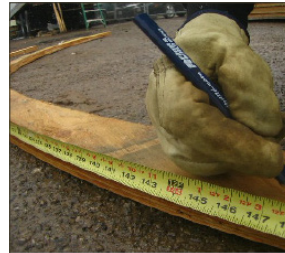
All drawings will be generated and engineered 'in-house', allowing for a seamless stream of communication within our development team (many who have worked together on nearly all 400+ concrete parks we have completed thus far). Review sets of all plans (including a comprehensive storm water management plan) will be provided at various stages of completion for approval by the project owner and the appropriate regulatory bodies. Upon final red line review and approval, all skatepark specific drawings and specifications will be issued for construction. To date, our custom drawings and specifications have been approved for implementation across North America. **Errors and Omissions insurance of \$3,000,000 (specifically covering concrete skatepark design) will accompany each final drawing submission.**



**4. Construction:** Once the design drawings have been converted into technical details the park must be built. For this important responsibility, SPA Skateparks is excited to offer the longest running, most experienced and highly recognized concrete skatepark construction team in Texas. Our team has worked hard to earn this industry reputation over the last decade and looks forward to employing the following approach to deliver the highest quality finished product possible for the City of Kyle.

**Construction Staff** - Skatepark construction is a very technical and specific art form that requires the proper care and precision to 'get it right'. Crew members must not only possess highly specialized concrete construction expertise but also have a comprehensive understanding of the skatepark user groups and their activities. Our team consists of 3 highly trained ACI (American Concrete Institute) accredited shotcrete nozzlemen and numerous experienced skatepark construction specialists, most of whom are also active recreational and/or competitive skateboarders. Under the leadership of Yann Curtis (see bio pg. 13), most of this crew has worked together since the company's inception, resulting in an extremely efficient and experienced proven core team with a host of top rated municipal concrete skateparks to their credit.

**Bonding and Insurance** - Our team does not take legal and insurance requirements lightly. We have worked hard to establish and maintain internally held bonding and insurance coverage through the same provider since the completion of our first design-build project. Acquiring and maintaining this coverage exclusively through the strength of our own firm holds significant importance for our team as it allows us to demonstrate a hard earned track record of budget responsibility and contract performance. Moreover, it allows us to keep costs lower and provide better overall value to our clients by removing any extra margin that an outside project partner would require for extending their coverage to our team. **Our team is proud to enter this project with industry leading CGL insurance, E&O insurance, and full bonding capacity.**



**Concrete mix design** - We have developed highly specific concrete mix designs for use in all our skatepark projects. These proprietary formulations vary for flat work, banks and shotcrete used in vertical and/or over-vertical elements. Each specialized concrete mix design variation and associated steel reinforcement specification has been developed with feedback from multiple engineering disciplines, ready-mix suppliers, and ACI / ASA certified concrete consultants, and will be tailored to each skatepark's unique terrain elements, site-specific engineering recommendations, and regional aggregate properties. The result will be a final skatepark facility with superb concrete durability and wear qualities specific to Texas climatic conditions.



**Custom tooling and CNC form technology** - Our team utilizes precise CNC cut forms and proprietary finishing tools for the execution of each skatepark project. Developed in-house at our own fabrication facility, all concrete forms, coping, steel edging and rails will be prepared to exacting precision based on the unique specifications of the final skatepark design. When completed, all prepared work will be shipped to the site area upon mobilization for a swift project start-up. These specially fabricated form packages and tools will allow for a significantly higher degree of terrain accuracy and quality throughout the build process while also providing heightened efficiency and cost savings by eliminating the majority of difficult onsite form preparation.

**BMX reinforced coping / custom ledge detailing** –

Understanding that the Kyle Skatepark facility will likely see use beyond just skateboarders, it will be critical to ensure the facility's construction detailing accounts for peg damage from modified BMX bikes. Our team uses an exclusive coping and ledge detail system that has proven to protect surfaces from peg damage without affecting the skateability of the park.



Heavy gauge steel coping back plate protects the bowl deck concrete in Winnipeg

**All Weather / Winter Construction:** Our team is no stranger to difficult work conditions and demanding time lines. With many municipalities facing increasingly stringent grant requirements and ambitious community expectations related to project schedule and budget, we have responded with the development of specialized tools and procedures that will minimize risk of project weather delay. This includes the use of a specialized series of concrete shelter systems as well as other industry best practices for architectural concrete works under inclement weather conditions. Our success in this area has made us one of the most sought after construction teams in Texas for time-sensitive projects.



**Community / local business participation / youth mentorship and work experience programs (Optional Program at City's Discretion)** - Truly successful skateparks have proven to be the result of active involvement from individuals across the entire community. This is true in relation to gathering to input during the design process but often also throughout the execution of the park's construction. Our team welcomes the participation of community members and neighborhood businesses throughout project's duration in both a paid and volunteer/donation capacity. From past experience, we know that many landmark projects would not be possible without this consideration.

**Donations in kind (Optional Program)...** Donations of cash and materials/labor in kind from the community may be contributed to this project during design development and at various points throughout construction. Our team is willing to consider select donations of materials and labour at a reasonable market value. Each donation will be reviewed and discussed with the project owner and a value will be set prior to accepting. Each contribution will result in a contract credit or addition to the park development. These additions may include extra square footage, park amenities, additional landscaping, etc.



Community volunteer and skatepark work experience program at Mount Nelson Skatepark - Invermere, BC

Local company, MD Landscaping, assists with excavation and grading in Cochrane, AB



**Paid Participation...** Although concrete skatepark construction is a highly specialized field involving unique equipment and personnel, there are still many opportunities for local businesses to assist with paid scopes of work for the Kyle project. Below are materials, equipment and labour our team will attempt to source locally:

- |                             |   |
|-----------------------------|---|
| - Excavation machinery      | - Lumber  |
| - Heavy Excavator Operator  | - Concrete supply and pumping                   |
| - Structural fill materials | - Overnight site security during critical pours |
| - Drainage materials        | - Landscaping materials and services            |
| - Rebar                     | - General labour for basic site assistance      |

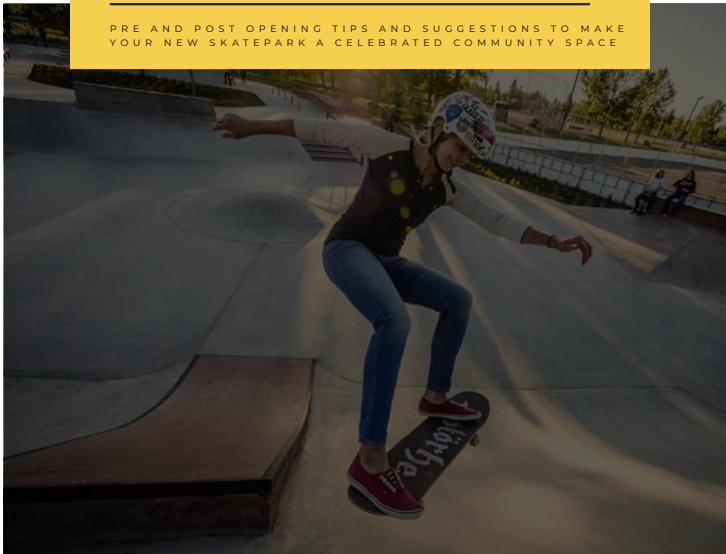


**Project Inspections, Warranty and Follow-up** - Having the appropriate checks and balances is important for any large construction project. The development of the Kyle Skatepark will be no different in this respect. Our team will be available to commission a series of testing over the project's course including fill compaction as well as various concrete mix design, slump, and cure tests. In addition, we will work with the Owner to create an open schedule of inspections by the appropriate municipal staff and local regulatory bodies. This will then be backed by our 1 year warranty program with regular review inspections conducted by senior staff from our Austin offices. We look forward continuing our ongoing relationship with the City and pulling resources out of our Austin offices as required to ensure the skatepark operates smoothly long after construction.

## SKATEPARK OWNER'S MANUAL



PRE AND POST OPENING TIPS AND SUGGESTIONS TO MAKE  
YOUR NEW SKATEPARK A CELEBRATED COMMUNITY SPACE



## AN OWNER'S GUIDE FOR YOUR NEW SKATEPARK

Congratulations, your community is now the proud owner of a modern concrete skatepark! As with all public facilities and capital assets, your new skatepark will require management. This document offers a summary of tips and advice to be considered for both PRE AND POST OCCUPANCY in 3 key areas:



### RISK MANAGEMENT



### MAINTENANCE & OPERATIONS



### PEOPLE & COMMUNITY

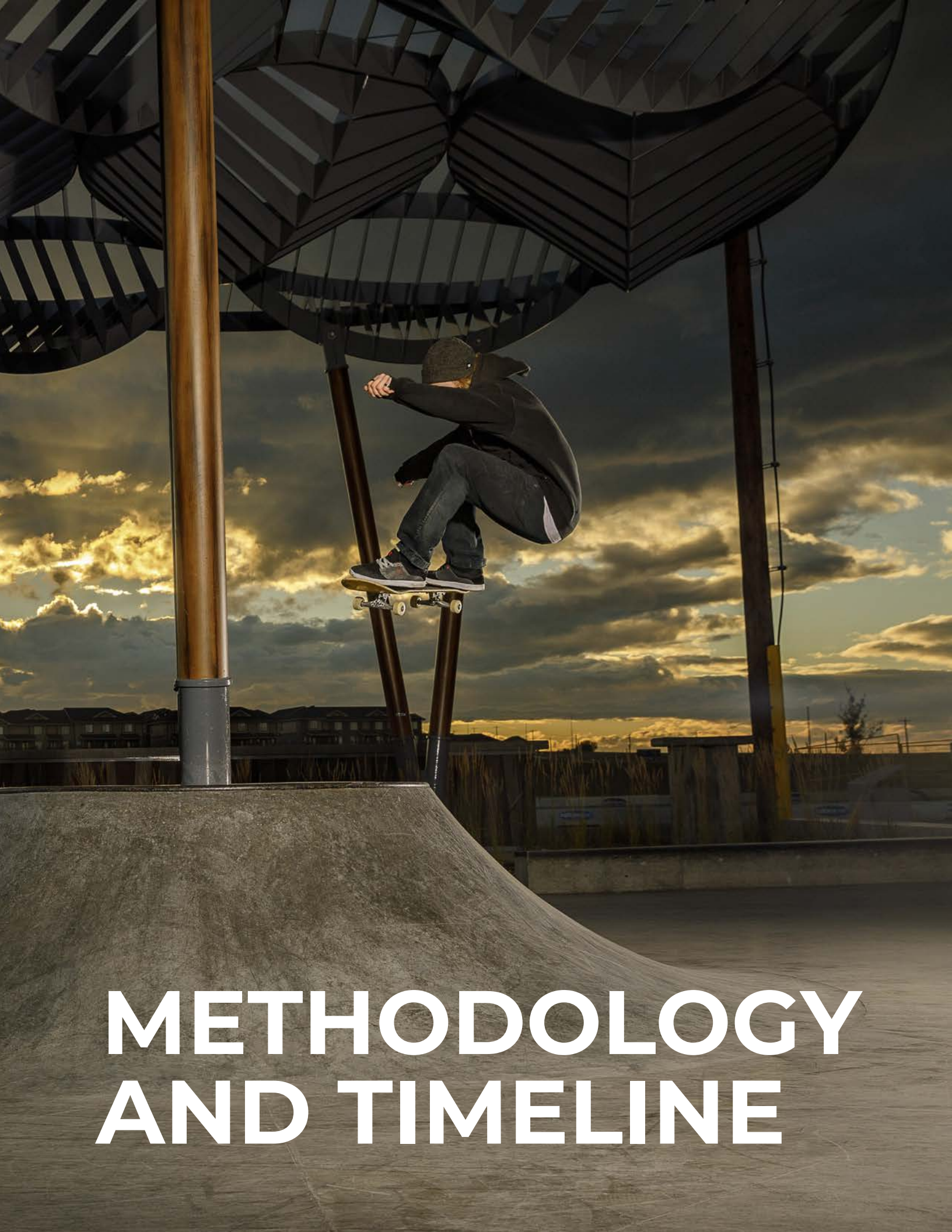
\* Disclaimer: The information provided in this manual is a collection of general tips and suggestions based on our team members' and clients' past experience in the development and operations of public concrete skateparks. While we hope this guide is helpful, it is not intended to be an exhaustive or definitive resource for all aspects related to the topics addressed therein (Risk Management, Maintenance and Ops, Community Integration). In particular, all Risk Management information should be reviewed and approved by your Risk / Legal Professional prior to implementation.

**PAGE INTENTIONALLY LEFT BLANK**









# METHODOLOGY AND TIMELINE



## PROPOSED METHODOLOGY AND TIMELINE

### Phase 1: Community Consultation and Concept Design

| Task      | Specific Objective  | Timeline/Deliverables   |
|-----------|---|---|
| <b>1.</b> | <b>Project Initiation / Site and Program Review</b><br><br>The Design-Build Team will meet with the City to thoroughly review the site area and intended program for skatepark development. At this time, project goals and objectives will be confirmed, timelines set, processes reviewed, and communication protocol established (including a suggested weekly update meeting day and time). The coordination approach with the City-appointed overall site designer will also be solidified at this time. The consulting team will then work with the City to obtain and review all available base data for the site. Any survey and geotechnical information will be obtained as well as other pertinent data related to grades, irrigation, existing vegetation, current and future site development. This information will serve as the foundation for future design work. | <i>Upon Award</i><br><br>Meeting minutes<br>key contact information<br><br>base data obtained.  |
| <b>2.</b> | <b>Create Base Maps and Site Analysis Drawings</b><br><br>Using information gleaned from task one, the Design-Build Team will prepare base maps from which all future design work will be based. This is critical to ensure that design development adheres to an accurate site-specific data set and the design team does not encounter unexpected site conditions later in the detail design phase.   | Base data will be reviewed with Owner<br><br>Digital files sent to Owner  |
| <b>3.</b> | <b>'Skateparks 101' Interactive Design Workshop 1</b><br><br>Prior to engaging in conceptual design development, the Design-Build Team will conduct a design workshop. This session usually takes place in the evening at a time convenient to both parents and youth. The workshop will consist of an oral presentation, power point review of youth park development and current trends in skatepark development in North America. This is a useful information session for those who wish to learn more about skateparks and their integration into the modern community. A comprehensive, 'hands-on' workshop, consisting of drawing, writing, and modelling specific park layout/feature options will be held after the formal presentations.  | <i>Week 3</i><br><br>Minutes and summary report of workshop submitted to Owner<br><br>Online forum / survey open for continued feedback (min 2 weeks) |
| <b>4.</b> | <b>Begin Development of Alternate Design Concepts</b><br><br>The Design-Build Team will gather information from the community design workshop and project initiation meetings, and begin concept development. Our experience has shown us that one dominant design detail will begin to emerge through this process, although we will offer a couple design variations for feedback. Our team is prepared to provide design for all aspects of the surrounding site area as one highly integrated design concept.   | In progress design schematics reviewed with Owner   |

| Task      | Specific Objective   | Timeline/Deliverables  |
|-----------|--|--|
| <b>5.</b> | <b>Internal Concept and Budget Review</b><br><br>The consulting team will meet with the Owner to review the concept development progress and discuss budgetary issues. The concept design will continue to be refined and the cost implications of the preferred concept will be evaluated in preparation for presentation to the community.   | <i>Week 7</i><br><br>2D and 3D concept drawings and preliminary cost estimates   |
| <b>6.</b> | <b>Concept Presentation - Design Workshop 2</b><br><br>Comprehensive 2D and 3D renderings of the completed concept design will be brought back to the community for feedback through a second interactive design workshop on a weekday evening convenient for parents and youth. The concept presentation will consist of a PowerPoint aided overview of the development process to date, a discussion of the guiding principles established at the first participatory workshop, and a thorough review of the site-specific concept design developed for the skatepark. This will be followed by a general Q&A session and opportunity for attendees to submit suggestions for any final modifications of the design. The workshop will conclude with a summary of input received and the collection of all written feedback forms. | <i>Week 8</i><br><br>Prepare and conduct workshop.<br><br>24" X 36" presentation panels of skatepark concept renderings.   |
| <b>7.</b> | <b>Submission of Final Concept Design Plan and Cost Estimate</b><br><br>Any modifications as a result of the community concept design/budget review will be prioritized for implementation and work will begin on the final concept design in conjunction with the Owner. We will update our plans so that the preferred park concept is fully dimensionally correct and technical drawings can proceed with ease. The final park concept, detailed conceptual cost estimate and summary report will be submitted to the Owner in digital and hardcopy form. We will also be prepared for any final presentations desired for the concept to the City Council and Community at this time.  | <i>Week 10</i><br><br>detailed 3D renderings + layout and elevations drawings (1 - 24" X 36" color presentation panels), detailed cost estimate, summary report. |

## Phase 2: Technical Design and Construction Drawings

|           |  |  |
|-----------|--|--|
| <b>1.</b> | <b>Begin Technical Design and Construction Drawings</b><br><br>We will begin work in earnest to complete the technical specifications and working drawings for the youth park project. We anticipated timeframe of 3 weeks until we can submit 50% complete drawings for discussion and review with the Owner. Coordination for permits will also continue through this phase. | <i>Week 10</i><br><br>50%, 75%, 100% complete drawings reviewed with Owner |
|-----------|--|--|



| Task      | Specific Objective  | Timeline/Deliverables  |
|-----------|---|--|
| <b>2.</b> | <b>Complete Construction Drawings Reviews</b><br><br>The technical design team will complete all construction detailing, construction documents and specifications for the skatepark project. Drawing sets and cost estimates will be reviewed with the Owner and relevant approval bodies at 50%, 75%, and 100% completion.  | 50%, 75%, and 100% complete drawings, specifications, and cost estimates   |
| <b>3.</b> | <b>Delivery of Final Construction Drawings</b><br><br>Any last amendments will be included in final construction documents and specifications. Final sealed drawings specifications, and Class A budget package will be sent to the Owner in accordance with the desired format and file scheme. Any changes made during construction will be provided via 'as built' drawings upon completion. | <i>Week 15</i><br><br>Copies of IFC drawings package, specifications, and final budget delivered to Owner in CAD and PDF formats |

### Phase 3: Construction

|           |   |  |
|-----------|---|--|
| <b>1.</b> | <b>Construction Mobilization</b><br><br>The Construction Team will review the priorities for park construction and a detailed schedule for completion of key milestones within each phase of construction. Our key site safety policies, environmental program, and quality assurance measures will also be confirmed at this time. We will also work with the Owner/Owner's Rep to physically verify the site fencing, construction access and staging areas, and traffic control realities. | <i>Estimated Timeline</i><br><br><i>(Week 1)</i> |
| <b>2.</b> | <b>Layout / Site Preparation / Demolitions</b><br><br>The construction team will layout all design grades, undertake any required demolitions, etc and prepare the site for grading and drainage.   | <i>Week 1</i>                                    |
| <b>3.</b> | <b>Grading &amp; Drainage</b><br><br>The construction team will proceed with installation of the drainage system. Any site servicing (if applicable) will be roughed into the park area at this time. Base grades will then be established.   | <i>Week 3</i>                                    |

| Task      | Specific Objective   | Schedule          |
|-----------|--|-------------------|
| <b>4.</b> | <b>Fine Shaping / Banks &amp; Transitions</b><br><br>Once the rough grades are established and the drainage is installed, we will proceed with fine shaping of the park elements. The park construction team will then assess the weather forecast. If weather is favourable for pouring concrete, our team will proceed with installing the banks and transitions. All banks and transitions are poured in small, controlled panels to ensure proper shaping and finishing. | <i>Week 5</i>     |
| <b>5.</b> | <b>Flat Slabs</b><br><br>Once all banks and panels are complete the construction team will prepare, form and pour the base slabs. These sections will require favorable weather as they are larger pours.  | <i>Week 9</i>     |
| <b>6.</b> | <b>Ledges &amp; keystone features</b><br><br>Upon completion of the banks, transitions and flat slabs, the construction team will proceed with forming and pouring all ledges and keystone features.   | <i>Week 11</i>    |
| <b>7.</b> | <b>Landscaping Preparation / Clean Up / Demobilization</b><br><br>Upon completion of all concrete work our team will remove construction debris and grade surrounding berms.   | <i>Week 14-16</i> |
| <b>8.</b> | <b>Finishing Landscaping / Facility Grand Opening</b><br><br>Once all concrete is completed and the park is cleaned and ready for use, our team will work together with the Owner to help coordinate all finishing landscaping installation. <u>At SPA Skateparks, we also take pride in participating in the skatepark opening ceremony and dedication events by helping organize professional skateboarding talent and prizes for the community.</u>                       |                   |

#### Phase 4: Warranty / Post Construction

1. The project will be backed by our comprehensive 1 year warranty program with regular inspections conducted by Principal staff from our Austin offices. We look forward continuing our ongoing relationship with the City and pulling resources out of our regional bases as required to ensure the skatepark operates smoothly long after construction (including advice on programming, events, maintenance, operations, etc.)









# QUALITY CONTROL



## QUALITY CONTROL

**Overall Project Management and Quality Control** - Our team has established design and construction operations that are in general compliance with ISO 9001 quality assurance measures. Our team will provide timely reports on project progress for compliance to specifications and client expectations. Detailed reports will be provided to the Owner's representative to ensure that schedule, budget, and deliverables are met. If the City has specific questions related to progress, schedule, or quality, our team of professionals will investigate and respond in a timely fashion. Our team uses industry standard protocol for project documentation and reporting. The Owner can expect clear, concise, and professional documentation of project progress so that reports can be made to other senior staff, specific departments, or political constituents.



**Budget:** Our team is a national leader for municipal concrete skatepark design, technical detail development, and construction. Because of our intimate knowledge of this style of project development, we are collectively involved with approximately 30 new concrete skateparks every year. This involvement in a variety of jurisdictions has given us a unique perspective on costing trends and projections throughout Texas and across the continent. Our in-house senior quantity survey team has worked on over 400 construction sites for skatepark development and we bring an unparalleled understanding of the issues that affect concrete skatepark construction costs. Recognizing this knowledge and experience, our team has full confidence in our ability to deliver a final design and construction program that will demonstrate exceptional value for the City and rival per square foot costs of all similar wheeled sports developments within the region. **In support of this claim, are all of our team's Texas design-build projects, which have been completed on-time and on-budget in accordance with the Owners' parameters.** Moreover, as one of the industry's most experienced construction teams, we have an excellent history of employing innovative value-engineering approaches when faced with difficult and/or unexpected build conditions. We look forward continuing this track record of budget certainty in Kyle with a final detailed construction cost breakdown submitted for approval prior to construction start-up.

**Schedule:** From our experience working on 300 + similar facility developments across the continent, our team is confident that the schedule outlined within this proposal is both reasonable and fully achievable. A final project timeline will be confirmed (and adjusted if desired) with the owner prior to start up and reviewed on a weekly basis by the consulting team to ensure key milestones are being met within set time allowances. Should a schedule deviation occur, all parties will be notified immediately with a discussion on project implications and mitigation options taking place thereafter. Our team is committed to upholding the schedule for this project and will pull-in additional staff resources whenever possible to maintain deliverables should an unexpected set back occur.

PAGE INTENTIONALLY LEFT BLANK







# PROPOSAL FORM AND INSURANCE DOCUMENTS





RFQ SUBMITTAL PAGE

This page (page 4) shall be included in the submitted sealed proposal. Please submit 4 copies of the proposal.

Total Cost Skate Park design and construction as described in Scope of RFQ for 2022:  
(Cost of permits, licenses and insurance shall be included in these amounts) \$1,000,000 - \$1,200,000\*

Breakdown of design and construction? Professional Design and Engineering: \$100,000; Construction: \$900,000 - \$1,100,000

Payment for design and construction: (please check one)

- ☐ Full payment 30 days after show  
☐ Deposit of 0 % made N/A days before show and balance paid in full 30 days net  
☐ Full Payment made

Included in this submission package at these required supporting documents:

YES A copy of a certificate or sample certificate of Insurance showing at least \$1M in General Liability and Statutory Workers Comp (Scope 6)

YES Company Narrative (Scope 11)

Company Name: SPA Skateparks

Company Mailing Address: 15401 Dexler Dr, Austin TX, 78734

Contact for Company/Vendor: Yann Curtis

Email: yann@spaskateparks.com

Daytime Phone Number: 512.203.5445

I, the undersigned agent for the company named above, certify that I am duly authorized to execute the proposal, that this company, corporation, firm, partnership or individual has not prepared this proposal in collusion with any other provider, and that the contents of this proposal as to prices, terms or conditions of said proposal have not been communicated by the undersigned nor by any employee or agent to any other person engaged in this type of business prior to the official opening of this RFQ.

Authorized Company Official (signature):

Authorized Company Official's Name: (printed):

  
Yann Curtis

Date Signed: October 31, 2022

\* Our project pricing submission assumes the City wishes to use the entirety of the available project budget and maximize facility activity value for the funding provided. Note that our team is happy to deliver a custom design-build solution for whatever final upset budget is ultimately established by the Owner.



TRANINC-01

JHILL

## CERTIFICATE OF LIABILITY INSURANCE

DATE (MM/DD/YYYY)  
10/25/2022

THIS CERTIFICATE IS ISSUED AS A MATTER OF INFORMATION ONLY AND CONFERS NO RIGHTS UPON THE CERTIFICATE HOLDER. THIS CERTIFICATE DOES NOT AFFIRMATIVELY OR NEGATIVELY AMEND, EXTEND OR ALTER THE COVERAGE AFFORDED BY THE POLICIES BELOW. THIS CERTIFICATE OF INSURANCE DOES NOT CONSTITUTE A CONTRACT BETWEEN THE ISSUING INSURER(S), AUTHORIZED REPRESENTATIVE OR PRODUCER, AND THE CERTIFICATE HOLDER.

**IMPORTANT:** If the certificate holder is an ADDITIONAL INSURED, the policy(ies) must have ADDITIONAL INSURED provisions or be endorsed. If SUBROGATION IS WAIVED, subject to the terms and conditions of the policy, certain policies may require an endorsement. A statement on this certificate does not confer rights to the certificate holder in lieu of such endorsement(s).

|  |  |                                      |
|--|--|--------------------------------------|
| <b>PRODUCER</b><br>Texas Associates Insurors<br>1120 Capital of TX Hwy South<br>Bldg 3-300<br>Austin, TX 78746 | <b>CONTACT NAME:</b>                                       |                                      |
|  | <b>PHONE (A/C, No, Ext):</b> (512) 328-7676                | <b>FAX (A/C, No):</b> (512) 327-8337 |
| <b>INSURED</b><br><br>SPA Skateparks<br>15401 Dexler Dr.<br>Austin, TX 78734                                   | <b>E-MAIL ADDRESS:</b>                                     |                                      |
|  | <b>INSURER(S) AFFORDING COVERAGE</b>                       |                                      |
|  | <b>INSURER A:</b> Hanover Atlantic Insurance Company, Ltd. | <b>NAIC #</b> A1316                  |
|  | <b>INSURER B:</b> The Cincinnati Insurance Company         | <b>10677</b>                         |
|  | <b>INSURER C:</b> Texas Mutual Insurance Company           | <b>22945</b>                         |
|  | <b>INSURER D:</b>  |                                      |
| <b>INSURER E:</b>  |  |                                      |
| <b>INSURER F:</b>  |  |                                      |

## COVERAGES

## CERTIFICATE NUMBER:

## REVISION NUMBER:

THIS IS TO CERTIFY THAT THE POLICIES OF INSURANCE LISTED BELOW HAVE BEEN ISSUED TO THE INSURED NAMED ABOVE FOR THE POLICY PERIOD INDICATED. NOTWITHSTANDING ANY REQUIREMENT, TERM OR CONDITION OF ANY CONTRACT OR OTHER DOCUMENT WITH RESPECT TO WHICH THIS CERTIFICATE MAY BE ISSUED OR MAY PERTAIN, THE INSURANCE AFFORDED BY THE POLICIES DESCRIBED HEREIN IS SUBJECT TO ALL THE TERMS, EXCLUSIONS AND CONDITIONS OF SUCH POLICIES. LIMITS SHOWN MAY HAVE BEEN REDUCED BY PAID CLAIMS.

| INSR LTR | TYPE OF INSURANCE   | ADDL INSD   | SUBR WVD   | POLICY NUMBER | POLICY EFF (MM/DD/YYYY) | POLICY EXP (MM/DD/YYYY) | LIMITS  |
|----------|---|---|--|---------------|-------------------------|-------------------------|---|
| A        | <input checked="" type="checkbox"/> COMMERCIAL GENERAL LIABILITY  |   |  | L3DJ149279    | 9/9/2022                | 9/9/2023                | EACH OCCURRENCE \$ 1,000,000  |
|          | <input type="checkbox"/> CLAIMS-MADE <input checked="" type="checkbox"/> OCCUR                            |   | DAMAGE TO RENTED PREMISES (Ea occurrence) \$ 100,000 |               |                         |                         |   |
|          | <input checked="" type="checkbox"/> Owner's & Contractor  |   | MED EXP (Any one person) \$ 5,000                    |               |                         |                         |   |
|          | <input checked="" type="checkbox"/> Per Proj Agg  |   | PERSONAL & ADV INJURY \$ 1,000,000                   |               |                         |                         |   |
|          | GEN'L AGGREGATE LIMIT APPLIES PER:  |   |  |               |                         |                         | GENERAL AGGREGATE \$ 2,000,000  |
|          | <input type="checkbox"/> POLICY <input checked="" type="checkbox"/> PRO-JECT <input type="checkbox"/> LOC |   |  |               |                         |                         | PRODUCTS - COMP/OP AGG \$ 2,000,000   |
|          | OTHER:  |   |  |               |                         |                         | \$  |
| B        | <b>AUTOMOBILE LIABILITY</b>   |   |  | EBA 0484660   | 4/19/2022               | 4/19/2023               | COMBINED SINGLE LIMIT (Ea accident) \$ 1,000,000                                |
|          | <input checked="" type="checkbox"/> ANY AUTO  |   | BODILY INJURY (Per person) \$                        |               |                         |                         |   |
|          | <input type="checkbox"/> OWNED AUTOS ONLY <input type="checkbox"/> SCHEDULED AUTOS                        |   | BODILY INJURY (Per accident) \$                      |               |                         |                         |   |
|          | <input type="checkbox"/> HIRED AUTOS ONLY <input type="checkbox"/> NON-OWNED AUTOS ONLY                   |   | PROPERTY DAMAGE (Per accident) \$                    |               |                         |                         |   |
|          |   |   |  |               |                         |                         | \$  |
| A        | <input type="checkbox"/> UMBRELLA LIAB <input checked="" type="checkbox"/> OCCUR                          |   |  | L3DJ149280    | 9/9/2022                | 9/9/2023                | EACH OCCURRENCE \$ 5,000,000  |
|          | <input checked="" type="checkbox"/> EXCESS LIAB <input type="checkbox"/> CLAIMS-MADE                      |   | AGGREGATE \$ 5,000,000                               |               |                         |                         |   |
|          | <input type="checkbox"/> DED <input type="checkbox"/> RETENTION \$  |   | \$   |               |                         |                         |   |
| C        | <b>WORKERS COMPENSATION AND EMPLOYERS' LIABILITY</b>  |   |  | 0001194434    | 9/9/2022                | 9/9/2023                | <input checked="" type="checkbox"/> PER STATUTE <input type="checkbox"/> OTH-ER |
|          | ANY PROPRIETOR/PARTNER/EXECUTIVE OFFICER/MEMBER EXCLUDED? (Mandatory in NH)                               | <input type="checkbox"/> Y / <input type="checkbox"/> N | N / A  |               |                         |                         | E.L. EACH ACCIDENT \$ 1,000,000   |
|          | If yes, describe under DESCRIPTION OF OPERATIONS below  |   |  |               |                         |                         | E.L. DISEASE - EA EMPLOYEE \$ 1,000,000   |
|          |   |   |  |               |                         |                         |   |

DESCRIPTION OF OPERATIONS / LOCATIONS / VEHICLES (ACORD 101, Additional Remarks Schedule, may be attached if more space is required)

## CERTIFICATE HOLDER

## CANCELLATION

FOR INFORMATION ONLY

SHOULD ANY OF THE ABOVE DESCRIBED POLICIES BE CANCELLED BEFORE THE EXPIRATION DATE THEREOF, NOTICE WILL BE DELIVERED IN ACCORDANCE WITH THE POLICY PROVISIONS.

AUTHORIZED REPRESENTATIVE