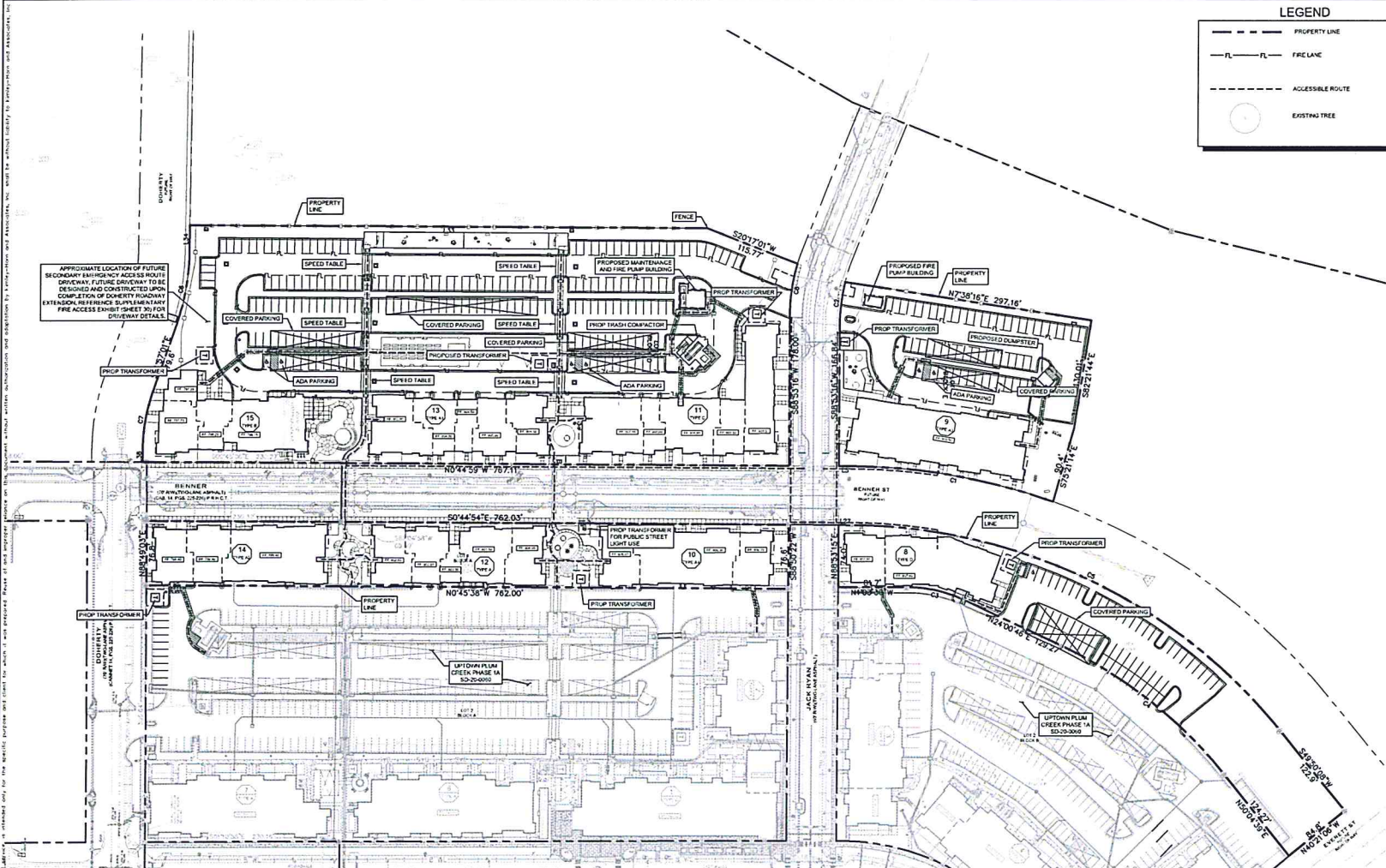


PROJECT: Brickmortar - Mortar, District, Phase 1B, 05/2022. DATE: 05/2022. DRAWN BY: J. KYLE. CHECKED BY: J. KYLE. SCALE: AS SHOWN. PLOT: 10 OF 50.

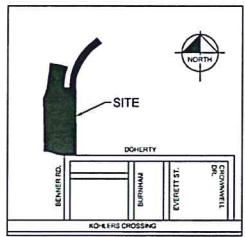


**LEGEND**

- PROPERTY LINE
- FIRE LANE
- ACCESSIBLE ROUTE
- EXISTING TREE

**GRAPHIC SCALE IN FEET**

0 30 60 120



**FLOODPLAIN NOTE**  
NO FLOODPLAIN IS LOCATED ON THE PROPERTY.

**FIRE LANE NOTES**

- Curb length greater than 50' with an opening on the street may use signage instead of Fire Lane Strips. And Must # Signs to be placed.
- Fire Lane Marking is not required on pavement behind parking spaces.

**PHASE 1B BUILDING DATA TABLE**

BLOCK	BLDG	TYPE	STORIES	HEIGHT	USE	AREA BY USE (SF)	TOTAL AREA
BLOCK A (LOT 2)	BLDG 14	A2	3	39'-2 3/4"	MULTIFAMILY	26,543	26,543
	BLDG 12	A	3	41'-2 3/4"	MULTIFAMILY	26,543	26,543
	BLDG 10	A4	3	41'-4"	MULTIFAMILY	26,543	26,543
<b>BLOCK B (LOT 2)</b>							
BLDG 8	D	3	39'-3"	MULTIFAMILY	29,041	29,041	
<b>BLOCK D (LOT 1)</b>							
BLDG 15	B	4	50'-10 3/4"	MULTIFAMILY	30,983	30,983	
BLDG 13	A1	4	52'-0"	MULTIFAMILY	38,271	38,271	
BLDG 11	C	4	51'-10 3/4"	MULTIFAMILY	51,976	51,976	
MAINT	---	1	---	MAINTENANCE	585	585	
<b>BLOCK E (LOT 1)</b>							
BLDG 9	A3	4	50'-0"	MULTIFAMILY	38,271	38,271	
						<b>TOTAL</b>	<b>268,756</b>

**PHASE 1B SITE AVERAGE TABLE**

BLOCK	ACRES	ACRES IC	%
BLOCK A (LOT 2)	1.34	0.93	69%
BLOCK B (LOT 2)	0.72	0.72	100%
BLOCK D (LOT 1)	3.18	3.18	100%
BLOCK E (LOT 1)	1.00	1.00	100%
<b>TOTAL</b>	<b>5.83</b>	<b>5.83</b>	<b>100%</b>

**REQUIRED PARKING - BLOCK A - PHASE 1B**

Ratio	Units	Required Parking
1BR	1.5	63
2BR	2	33
3BR	2.5	0
		<b>96</b>

**REQUIRED PARKING - BLOCK D**

Ratio	Units	Required Parking
1BR	1.5	209
2BR	2	42
3BR	2.5	4
		<b>255</b>

**OVERALL PARKING TRACKING TABLE**

BLOCK	REQUIRED PARKING	GARAGE PARKING PROVIDED*	SURFACE PARKING PROVIDED	STREET PARKING PROVIDED	TOTAL PARKING PROVIDED
PHASE 1A	EX-A	289	0	216	73
PHASE 1A	EX-B	245	17	194	40
PHASE 1A	A	161	77	89	45
PHASE 1A	B	51	8	68	0
PHASE 1A	D	258	23	202	32
PHASE 1A	E	80	9	60	5
<b>TOTAL</b>	<b>1084</b>	<b>79</b>	<b>829</b>	<b>195</b>	<b>1103</b>

\*INCLUDES BUILDING GARPORTS  
\*\*EX-A: 32 REQUIRED PARKING STALLS FOR RETAIL/RESTAURANT

**PHASE 1B SITE IMPERVIOUS COVER TABLE**

BLOCK	ACRES	ACRES IC	%
BLOCK A (LOT 2)	1.34	0.93	69%
BLOCK B (LOT 2)	0.72	0.72	100%
BLOCK D (LOT 1)	3.18	3.18	100%
BLOCK E (LOT 1)	1.00	1.00	100%
<b>TOTAL</b>	<b>5.83</b>	<b>5.83</b>	<b>100%</b>

**CAUTION!**  
CONTRACTOR IS TO VERIFY PRESENCE AND EXACT LOCATION OF ALL UTILITIES PRIOR TO CONSTRUCTION.

**BENCHMARKS**

BM #1: SQUARE CUT ON TOP OF CONCRETE STORM DRAIN IN THE NORTH MARSH OF KOKA HIGGS CROSSING, 1.160' NORTHWEST FROM A POWER POLE IN THE NORTH MARSH OF KOKA HIGGS CROSSING, AND 3.4' SOUTHWEST FROM A STOP SIGN IN THE NORTH MARSH OF KOKA HIGGS CROSSING. ELEV=773.40'

BM #2: SQUARE CUT ON TOP OF CONCRETE STORM DRAIN IN WEST MARSH OF BENEER, 8' NORTHWEST FROM A STORM MANHOLE AND 117' SOUTHWEST FROM A FIRE HYDRANT AND 1.6' SOUTHWEST OF A WATER VALVE. ELEV=770.51'

BM #3: SQUARE CUT ON TOP OF CONCRETE CURB ON THE NORTH MARSH OF BENEER, 8' SOUTHWEST FROM A FIRE HYDRANT AND 1.6' SOUTHWEST OF A WATER VALVE. ELEV=774.11'

NO.	REVISIONS	DATE	BY

**Kimley»Horn**

500 SOUTHWEST RAINBOW BLVD. SUITE 100  
AUSTIN, TEXAS 78723  
PHONE: 512-418-1771 FAX: 512-418-1791  
TEXAS REGISTERED ENGINEERING FIRM 1-228



5/9/2022  
 PROJECT: BRICKMORTAR - MORTAR, DISTRICT, PHASE 1B  
 DATE: 05/2022  
 SCALE: AS SHOWN  
 DRAWN BY: JK  
 CHECKED BY: JK

**OVERALL SITE PLAN**

**BRICK & MORTAR DISTRICT, PHASE 1B**  
CITY OF KYLE  
HAYS COUNTY, TEXAS









