

A large green diagonal graphic that starts from the top right and extends towards the bottom left, creating a triangular shape on the right side of the slide.

EMERALD CROWN TRAIL PUBLIC INPUT

March 27-29, 2018

ABOUT THE **EMERALD CROWN TRAIL**

Regional Trail

The Emerald Crown Trail will form the backbone for a regional trail system in Hays County

Connecting Communities

The Trail will connect Buda, Kyle, and San Marcos--and may someday connect to points north and south.

Many Opportunities

The Emerald Crown Trail will provide opportunities for recreation and transportation.

Voluntary

The Trail will only go where it's wanted--relying on public land and voluntary easements.

WHERE WE ARE NOW

WORK GROUP FORMATION

Initial Brainstorming and Proposal



PUBLIC ENGAGEMENT

Identify Trail Design and Experience



PRELIMINARY ROUTE PLANNING

Led by City/County Staff and Officials

PUBLIC REVIEW

Review Routes and Design Concepts

FINAL TRAIL PLAN

*Design, Route,
Implementation
Strategies*



PUBLIC ENGAGEMENT





GOALS FOR PUBLIC ENGAGEMENT

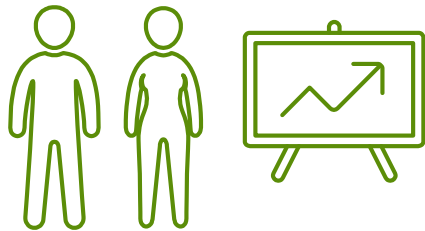
Understand desired trail activities

Determine preferred trail design

Identify access points and possible amenities

Determine where the trail might go (route)

Understand issues and concerns



THREE WORKSHOPS

San Marcos

March 27

Buda

March 28

Kyle

March 29

160

Participants



SIX PUBLIC INPUT **ACTIVITIES**



General Comments

Reviewed information about the project and provided general feedback



Trail Activities

Identified activities to engage in on a future Emerald Crown Trail



Trail Design

Reviewed possible designs for the trail and voted for preferred design

SIX PUBLIC INPUT **ACTIVITIES**



Trailhead Design and Amenities

Reviewed trailhead designs and voted on preferred design, amenities



Issues, Challenges, Solutions

Identified issues with the project and proposed solutions



Destinations, Opportunities

Shared potential destinations, trailheads, and other opportunities on a large map

RESULTS





TRAIL ACTIVITIES



Most participants planned to engage in **active recreational pursuits** on the future trail



TRAIL ACTIVITIES

Many were also
interested in
**nature-centered
activities**





Nature Trails



Mountain Bike/
Equestrian



Family-Friendly
Trails



Paved Multi-Use



Paved +
Soft Surface



TRAIL DESIGN

Nature Trails



Family-Friendly Trails



TRAIL DESIGN



TRAILHEAD DESIGN

Participants preferred **medium-sized trailheads** with some amenities and fewer than ten parking spaces





TRAILHEAD AMENITIES

Trail information stations/kiosks

Restrooms

Drinking fountains

Bike racks



ISSUES AND SOLUTIONS

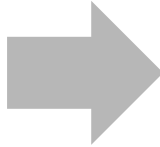
Safety

Maintenance

Litter and other waste

Opposition from
private landowners

Privacy



Trail patrols & safety info.
at trailheads

Volunteer trail crews

Trash receptacles, pet
waste bags

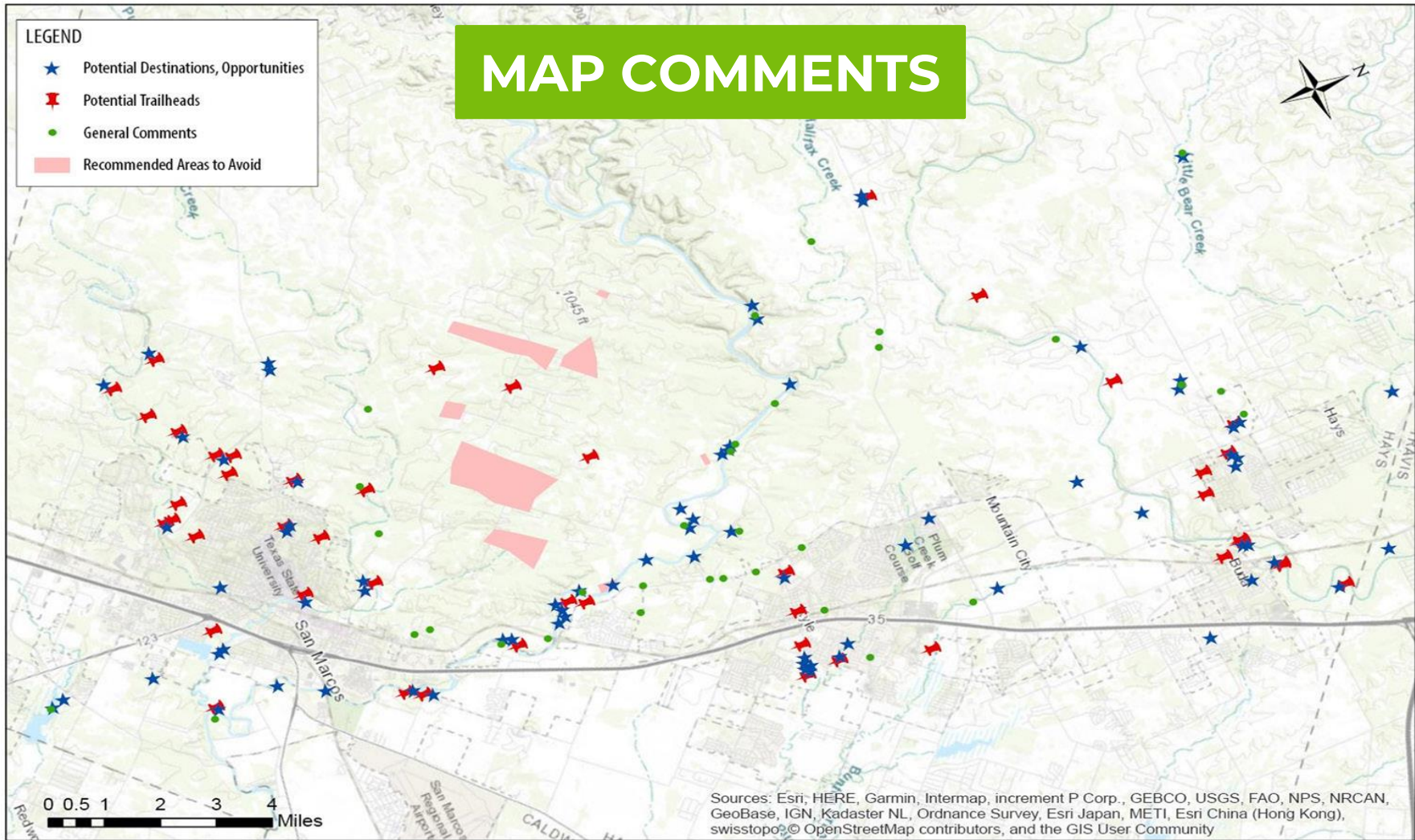
Use existing ROW, public
land, voluntary easements

Screening and trail routing

LEGEND

- ★ Potential Destinations, Opportunities
- ✚ Potential Trailheads
- General Comments
- Recommended Areas to Avoid

MAP COMMENTS



Sources: Esri, HERE, Garmin, Intermap, increment P Corp., GEBCO, USGS, FAO, NPS, NRCAN, GeoBase, IGN, Kadaster NL, Ordnance Survey, Esri Japan, METI, Esri China (Hong Kong), swisstopo, OpenStreetMap contributors, and the GIS User Community



GENERAL COMMENTS

Connectivity

Participants liked the idea of connecting local communities (and areas within communities)

Safety

Many remarked on how important it is to have off-street opportunities for recreation and transportation.

Recreational Opportunities

They also liked that the Emerald Crown Trail would provide a new recreational opportunity, and a chance to connect with nature.

Public Input

Several commentators commended the Regional Trail Work Group for their focus on public engagement.

SUMMARY





Active Recreation



Nature- Oriented Activities





Nature Trails



Family-Friendly Trails





Medium-Sized Trailheads



Some Amenities





Strong Public Support



NEXT STEPS

NEXT STEPS: RESOLUTION IN SUPPORT

Express support for the trail concept

Support use of existing parkland and ROW
and voluntary easements; no use of eminent
domain

Direct staff to participate in locally-focused
trail route planning – separate groups for
Buda, Kyle, San Marcos

Direct staff to continue participating in the
Work Group

NEXT STEPS: **TRAIL ROUTE** PLANNING

Workshops in Buda, Kyle, San Marcos, and with Hays County

Will work directly with City/County staff, elected and appointed officials, and key stakeholders

Will identify potentially feasible routes for the trail through each community

Followed by further public engagement and input

QUESTIONS?

Emerald
Crown
Trail