

Emerald Crown Trail Planning Phase

A Regional Trail Connecting Communities in Eastern Hays County



SAN MARCOS
GREENBELT ALLIANCE
www.smgreenbelt.org

Emerald Crown Trail Planning Phase



Overview

- The Work Group - Partners and Stakeholders
- Work Group Ground Rules
- Purposes for the Trail
- Vision for the Trail
- Progress Thus Far
- Next Steps
- Wrap-up

A Regional Trail Connecting Communities in Eastern Hays County

Emerald Crown Trail Planning Phase



SMGA Background

- All volunteer, member-based nonprofit
- Formed in 1998
- \$25K annual budget (approx.)
- Trail crew builds/maintains single-track trails in San Marcos natural areas
- Maintain trail maps, promote use of trails

A Regional Trail Connecting Communities in Eastern Hays County

Emerald Crown Trail Planning Phase



SMGA Role in This Project

- Catalyst for cooperative efforts of partners and stakeholders
- Regional trail is not a SMGA project!

Emerald Crown Trail Planning Phase



Regional Trail Work Group

Partners: SMGA, City of Kyle, City of San Marcos, City of Buda, Hays County

Stakeholders: Guadalupe-Blanco River Trust, Meadows Center, Hill Country Conservancy, Take-a-Hike San Marcos, Texas State Univ. Geography Dept.

A Regional Trail Connecting Communities in Eastern Hays County

Emerald Crown Trail Planning Phase



Work Group Ground Rules

- All partners/stakeholders have a vote
- Meetings open to public
- Decisions by consensus
- Group will not request use of eminent domain to secure ROW
- Look for win-win opportunities with landowners and developers

A Regional Trail Connecting Communities in Eastern Hays County

Emerald Crown Trail Planning Phase



Purposes for the Trail

- Transportation – Primary purpose
- Recreation
- Health
- Connecting communities
- Connecting with nature

A Regional Trail Connecting Communities in Eastern Hays County

Emerald Crown Trail Planning Phase



Vision for the Trail

- Walkable and bikeable
- Wide enough for two-way traffic
- A backbone that connects to points of interest and other trails

A Regional Trail Connecting Communities in Eastern Hays County

Emerald Crown Trail Planning Phase



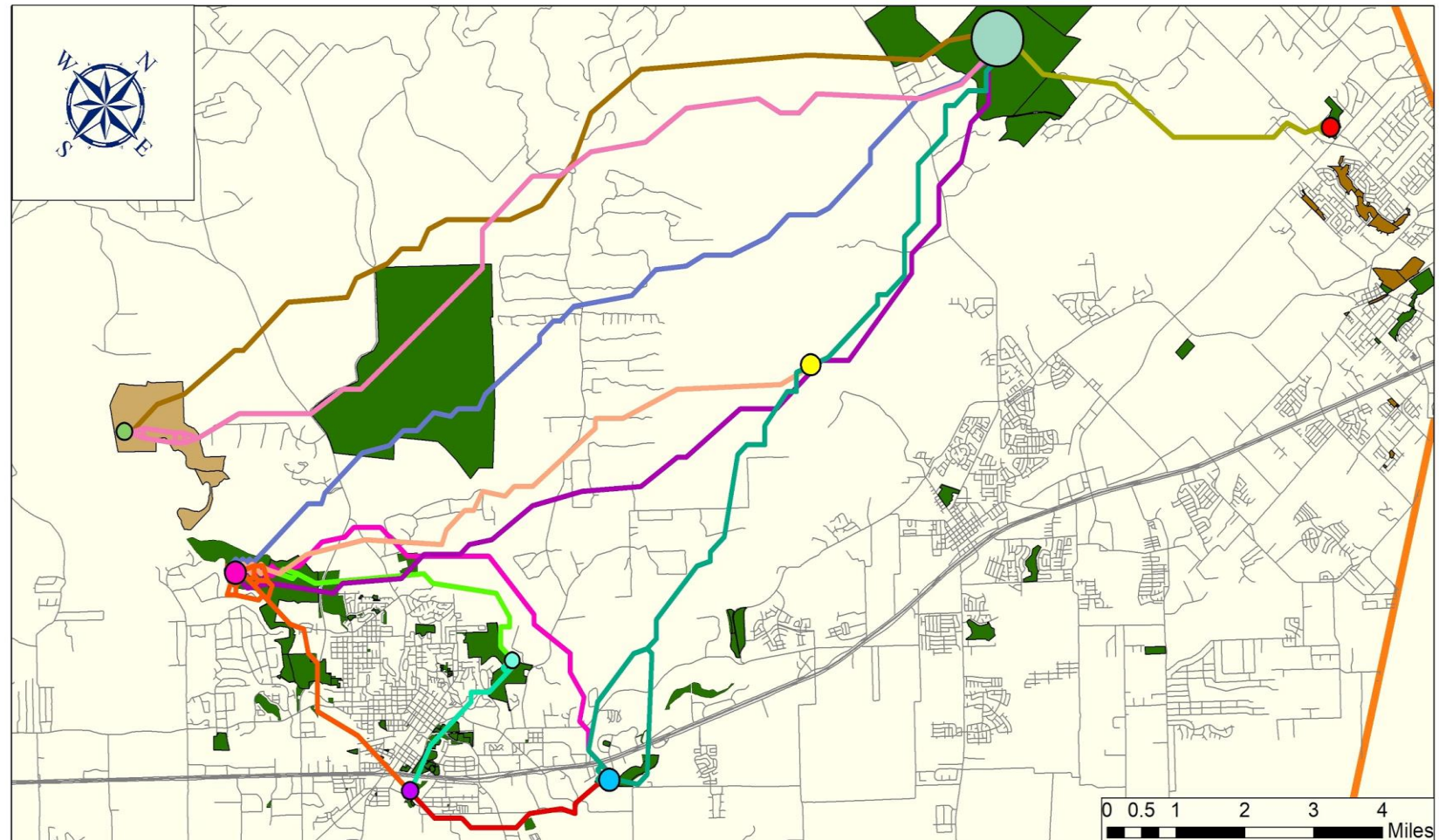
Progress Thus Far

- Work Group Approved Ground Rules, Vision for the Trail, and trail name – Emerald Crown
- Community assistance award - NPS Rivers, Trails and Conservation Assistance (RTCA) program (technical, outreach, planning; no funds)
- Engaged TXST Geography GIS group for preliminary mapping of possible trail routes

A Regional Trail Connecting Communities in Eastern Hays County

TX State GIS Class – Map of Conceptual Trail Routes

Emerald Crown Trail- Conceptual Routes



Emerald Crown Trail Planning Phase



Next Steps

- Public workshops in area communities
- Develop concept plan/master plan
- Determine funding sources, schedule and approach to construction, M&O obligations
- Look for opportunities with landowners/developers

A Regional Trail Connecting Communities in Eastern Hays County

Emerald Crown Trail Planning Phase



Wrap-up

- The Emerald Crown is only a proposal at this point
- We are not asking for funding! (Well, not yet)
- We are asking for continued involvement in the Work Group's planning process
- We may request input from your parks/ planning/GIS staffs – your direction will help

A Regional Trail Connecting Communities in Eastern Hays County

Emerald Crown Trail Planning Phase

Questions?

Thanks from SMGA and the Work
Group!

A Regional Trail Connecting Communities in Eastern Hays County



SAN MARCOS
GREENBELT ALLIANCE
www.smgreenbelt.org