

WAYFINDING PROGRAM  
KYLE, TEXAS

BY



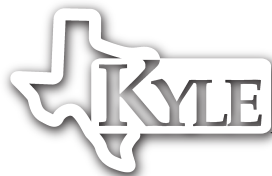
10.2017

**WAYFINDING DIRECTIONALS**

DIRECTIONAL SPECIFICATIONS	1
SIGN SCHEDULE	2
DIRECTIONAL BASE / D.O.T. BREAKAWAY	3

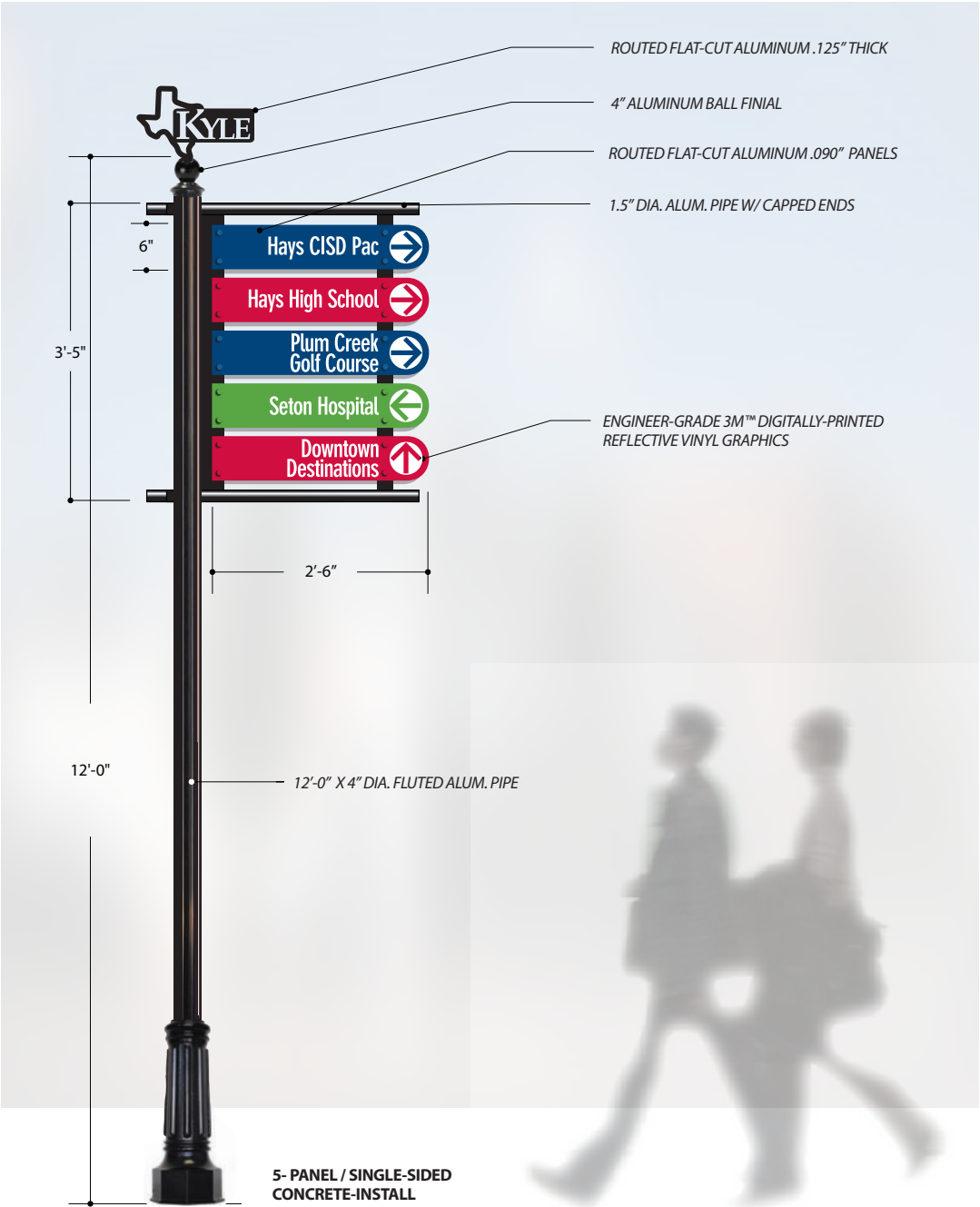
**GATEWAY MONUMENTS**

RENDERINGS	4
PLACEMENT PHOTOS	5
SPECIFICATIONS	6
LOCATOR MAP	7
BASE ENGINEERING / SLOPED INSTALL	8
BASE ENGINEERING / FLAT GRADE INSTALL	9



**A Wayfinding Directionals**  
Scale: 3/8" = 1'-0"

- Fabricate and install FIFTEEN (15) gateway monuments;
- Qty (15) S/F wayfinding signs;
  - 12' x 4" diameter fluted aluminum posts w/ ball-finials painted black;
  - 2'-0" tall aluminum bases;
  - (1-5) 6.25" x 31.5" removeable directional panels mounted to .125" alum. vertical supports finished MP black;
  - 1.5" Dia. Alum. pipe crossmembers / fin. MP black and capped;
  - Removeable directional panels to have digitally printed reflective vinyl graphics applied first surface;
  - Routed .125" aluminum Kyle logo;
  - 4" fluted decorative alum. base painted MP black;
  - Aluminum post to be welded to .5" thick aluminum plate for use with DENT breakaway system;
  - DENT breakaway anchors, bolts, nuts, & washers - All pending engineered approval;
  - 3000psi concrete piers per location reqm't;



BASE-DETAIL



FINIAL-DETAIL

	<b>MATTHEWS 12602</b> Red: PANTONE 193
	<b>MATTHEWS 11856</b> Green: PANTONE 369
	<b>MATTHEWS 02098</b> Bluebonnet Blue: PANTONE 295

CITY OF KYLE KYLE, TEXAS	Start Date: 7/16/2017 Last Revision: Job#: 92J8657 Drawing #: 92J8657AV2S1	Design Rep. BEN ANGLIN Sales Rep. ANDREW CHAPMAN	CLIENT APPROVAL APPROVAL: I have reviewed and approved the sign details on this drawing for fabrication and installation. DATE	LANDLORD APPROVAL APPROVAL: I have reviewed and approved the sign details on this drawing for fabrication and installation. DATE	REVISIONS	
					MM/DD/YY	REMARKS
					1	
					2	
					3	
					4	
					5	



AV1S1

KYLE

Hays High School

AV1S2

KYLE

Hays CISD Pac

Hays High School

Plum Creek Golf Course

AV1S3

KYLE

Hays CISD Pac

Hays High School

Plum Creek Golf Course

AV1S4

KYLE

Hays CISD Pac

Hays High School

Plum Creek Golf Course

Downtown Destinations

AV1S5

KYLE

Hays CISD Pac

Hays High School

Plum Creek Golf Course

Seton Hospital

Downtown Destinations

AV1S6

KYLE

Hays CISD Pac

Hays High School

Plum Creek Golf Course

Seton Hospital

AV1S7

KYLE

Lehman High School

Steeplechase Park

Lake Kyle Park / Pard Office

Public Works Office

AV1S8

KYLE

Steeplechase Park

Lake Kyle Park / Pard Office

Public Works Office

Downtown Destinations

AV1S9

KYLE

Lehman High School

Steeplechase Park

Lake Kyle Park / Pard Office

Public Works Office

AV1S10

KYLE

Steeplechase Park

Lake Kyle Park / Pard Office

Public Works Office

Downtown Destinations

AV1S11

KYLE

Seton Hospital

Police Department

Kyle City Hall

Downtown Destinations

AV1S12

KYLE

Police Department

Kyle City Hall

Downtown Destinations

AV1S13

KYLE

Police Department

Kyle City Hall

Downtown Destinations

AV1S14

KYLE

Gregg Clarke Park / City Pool

Library

Texas Old Town

Clairborne-Kyle Log House

Cemeteries

AV1S15

KYLE

Texas Old Town

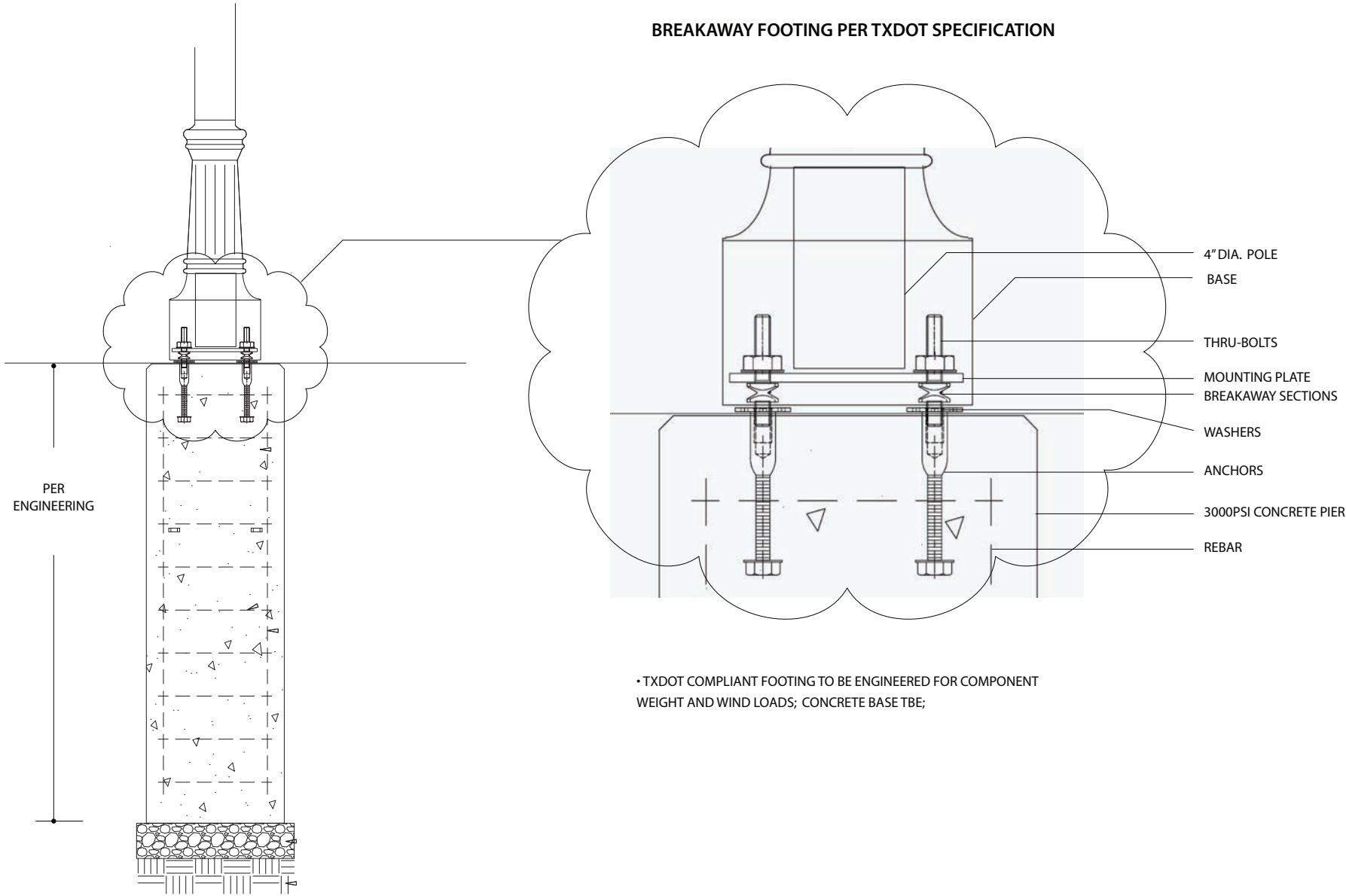
Clairborne-Kyle Log House

Cemeteries





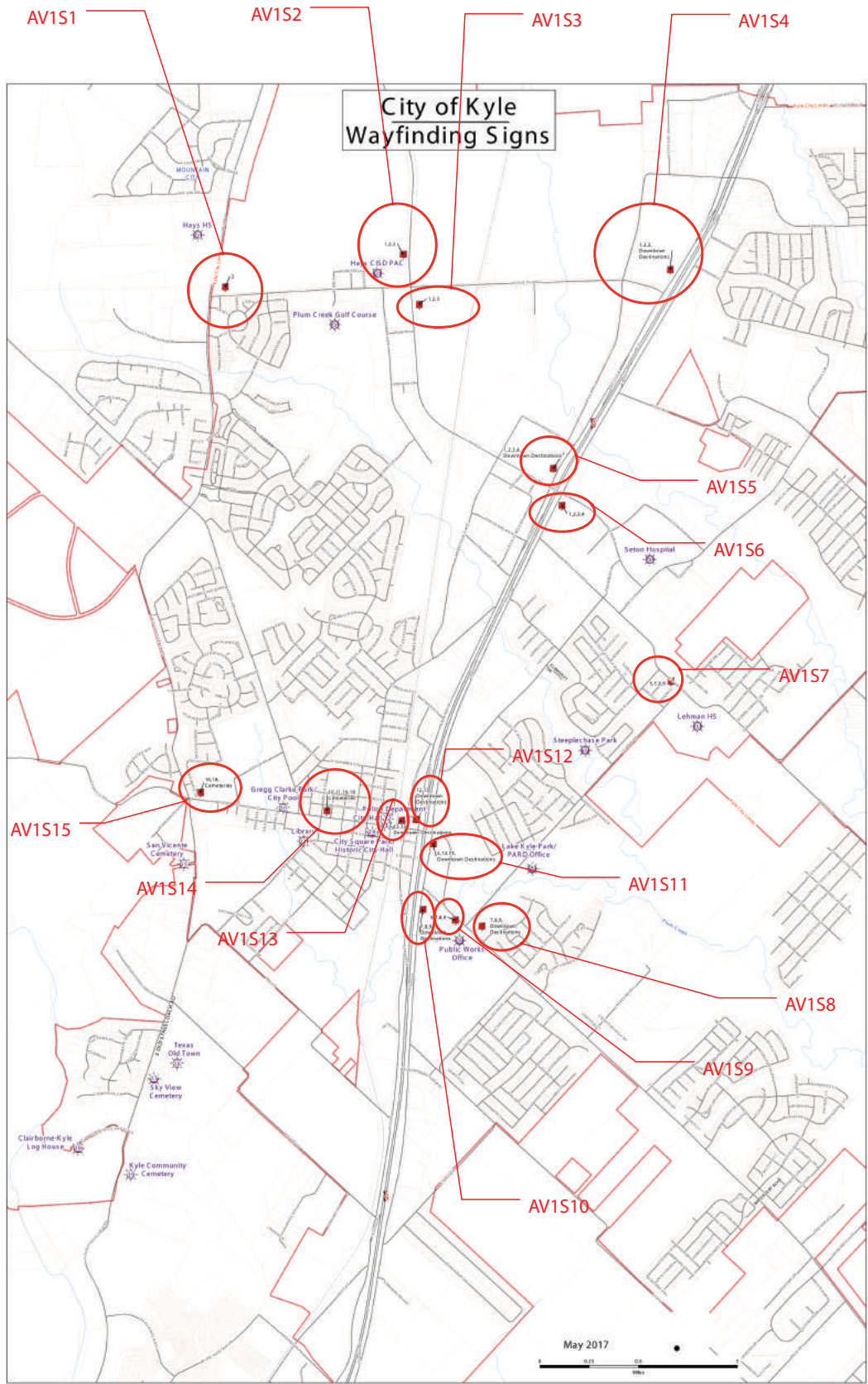
Scale: NTS



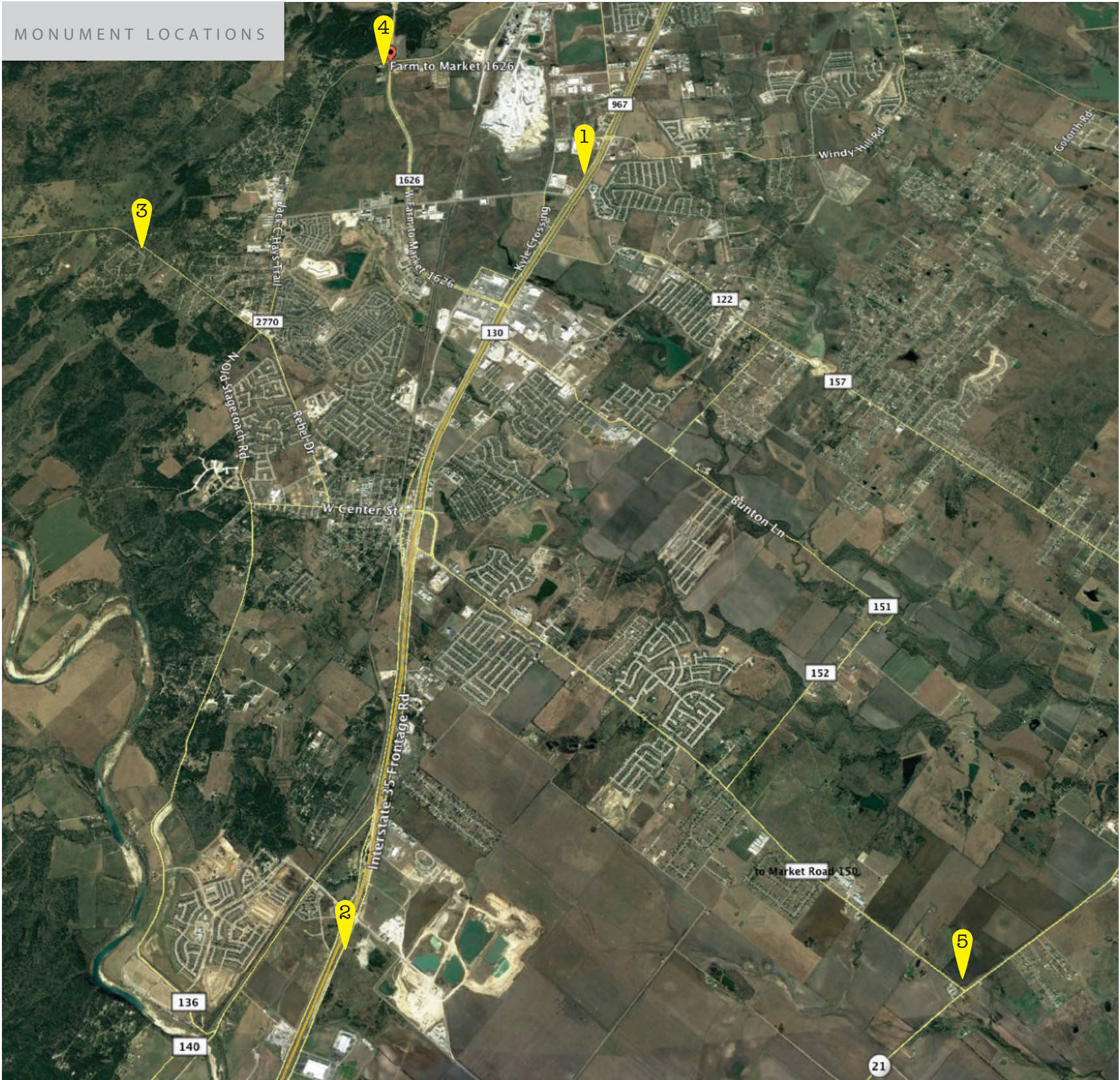
CITY OF KYLE KYLE, TEXAS	Start Date: 7/16/2017 Last Revision: Job#:92J8657 Drawing #:92J8657AV2S3	Design Rep. BEN ANGLIN Sales Rep. ANDREW CHAPMAN	CLIENT APPROVAL APPROVAL: I have reviewed and approved the sign details on this drawing for fabrication and installation. LANDLORD APPROVAL APPROVAL: I have reviewed and approved the sign details on this drawing for fabrication and installation.	REVISIONS	
				MM/DD/YY	REMARKS
				1	
				2	
				3	
				4	
				5	



WAYFINDING  
LOCATOR

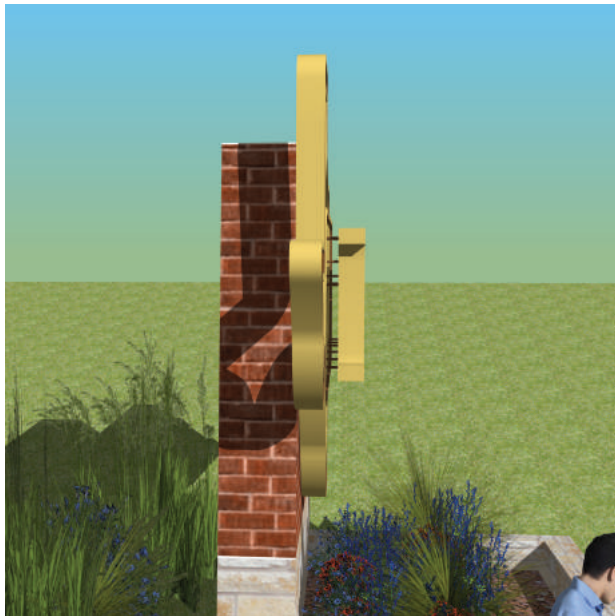


MONUMENT LOCATIONS



CITY OF KYLE KYLE, TEXAS	Start Date: 7/16/2017 Last Revision: Job#:92J657 Drawing #:92J8657_LOCATOR	Design Rep. BEN ANGLIN Sales Rep. ANDREW CHAPMAN	CLIENT APPROVAL APPROVAL: I have reviewed and approved the sign details on this drawing for fabrication and installation. DATE	LANDLORD APPROVAL APPROVAL: I have reviewed and approved the sign details on this drawing for fabrication and installation. DATE	REVISIONS	
					MM/DD/YY	REMARKS
					1	
					2	
					3	
					4	
					5	



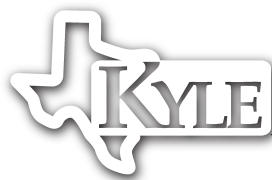


**B** Gateway Monument  
nts

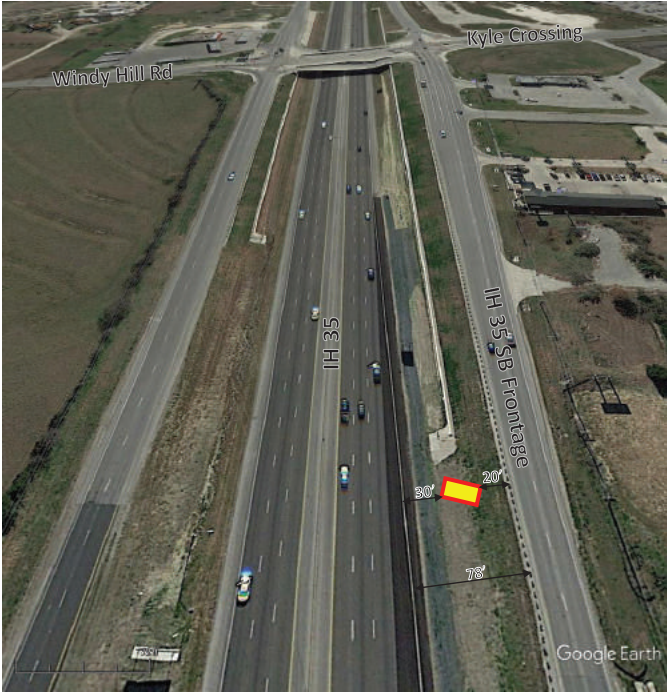
See following pages for specifications, engineering and dimension schedule;

CITY OF KYLE KYLE, TEXAS	Start Date: 7/16/2017 Last Revision: Job#:92J8657 Drawing #:92J8657BV2S1	Design Rep. BEN ANGLIN Sales Rep. ANDREW CHAPMAN	..... CLIENT APPROVAL      APPROVAL: I have reviewed and approved the sign details on this drawing for fabrication and installation.      DATE  ..... LANDLORD APPROVAL      APPROVAL: I have reviewed and approved the sign details on this drawing for fabrication and installation.      DATE	REVISIONS	
				MM/DD/YY	REMARKS
				1	
				2	
				3	
				4	
				5	

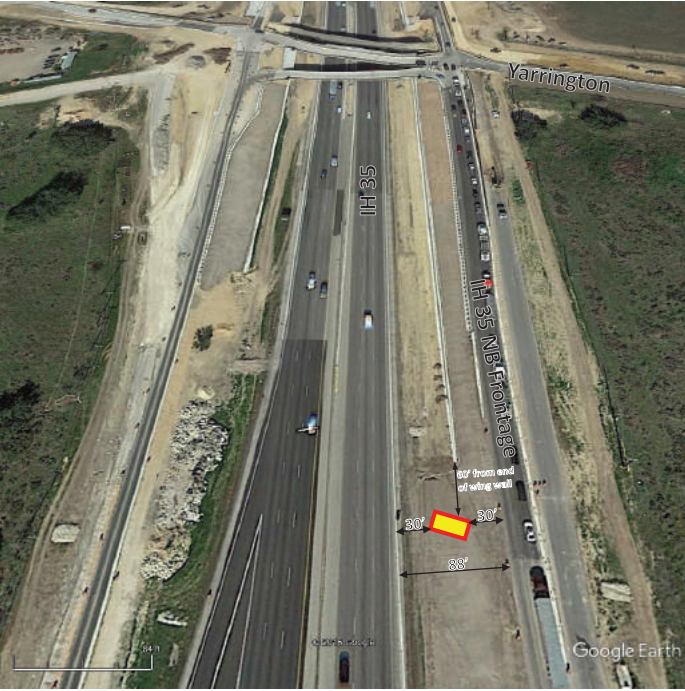




Proposed Location of  
City of Kyle Gateway Sign  
Southbound IH 35  
Approximately 1200 feet north  
of the Kyle Crossing Bridge

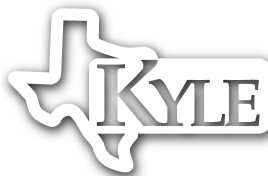


Proposed Location of  
City of Kyle Gateway Sign  
Northbound IH 35  
Approximately 2000 feet south  
of the Yarrington Rd Bridge



CITY OF KYLE KYLE, TEXAS	Start Date: 7/16/2017 Last Revision: Job#:92J8657 Drawing #:92J8657BV2S2	Design Rep. BEN ANGLIN Sales Rep. ANDREW CHAPMAN	CLIENT APPROVAL APPROVAL: I have reviewed and approved the sign details on this drawing for fabrication and installation. DATE  LANDLORD APPROVAL APPROVAL: I have reviewed and approved the sign details on this drawing for fabrication and installation. DATE	REVISIONS	
				MM/DD/YY	REMARKS
				1	
				2	
				3	
				4	
				5	

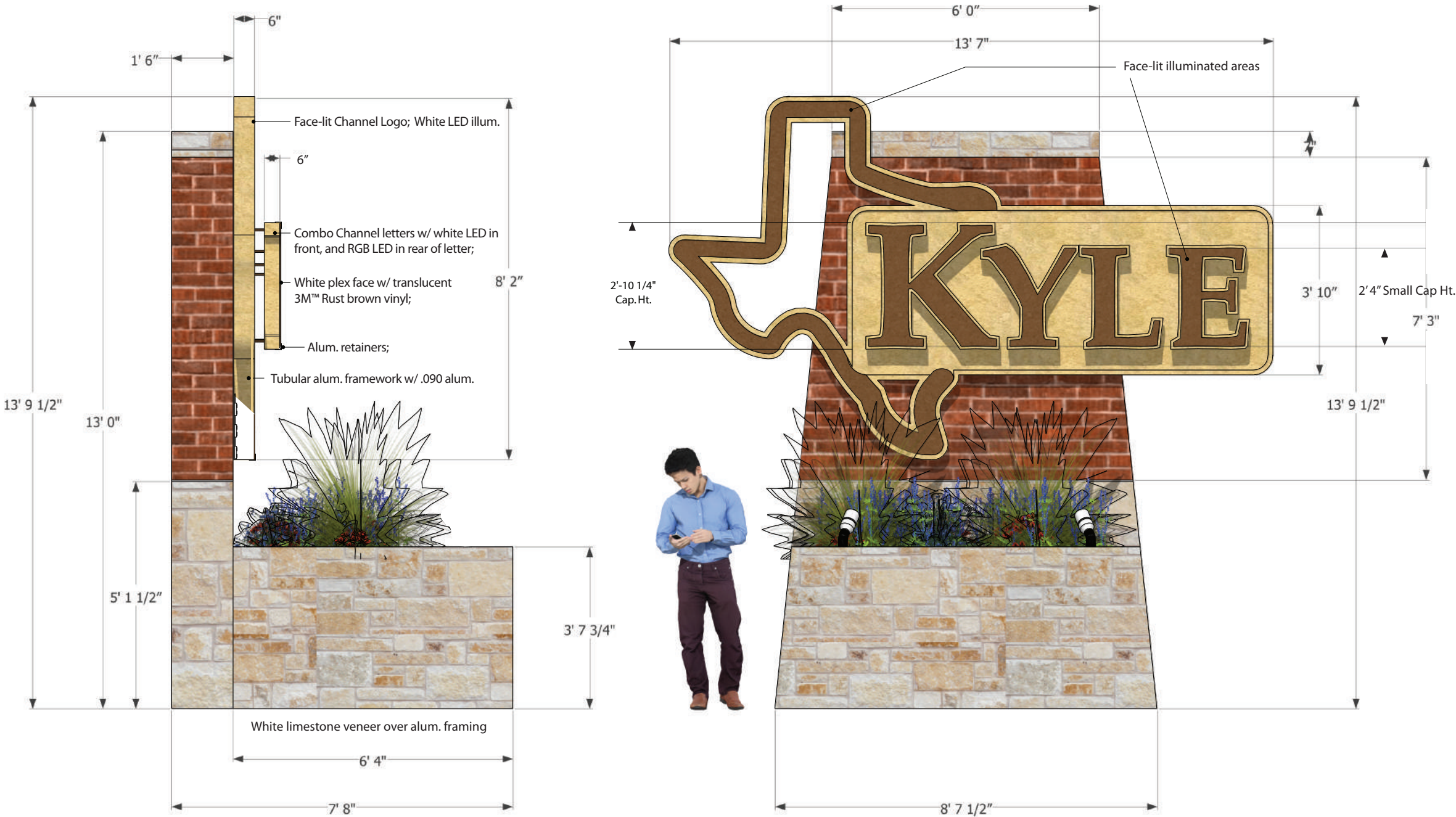
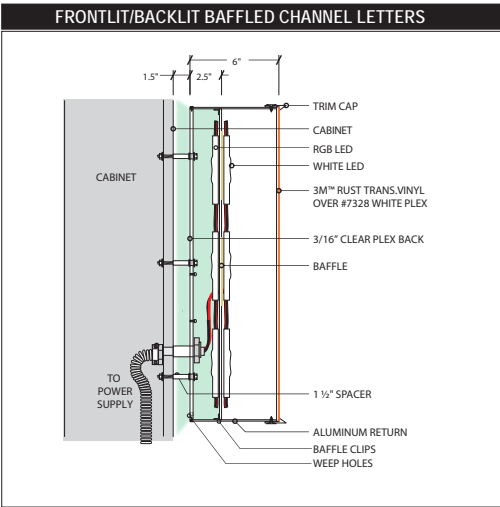




**B Gateway Monument**  
Scale: 3/8" = 1'-0"

- Fabricate and install FIVE (5) gateway monuments;
- Logo/letterset to be welded tubular-aluminum framework with .090 alum. plate exterior; Finished MP 21107 Fool's Gold;
  - Facelit/Backlit channel letters wit:
    - White plex faces overlaid with 3M™ Rust translucent vinyl # 3630-63;
    - Aluminum retainers;
    - White LED illumination in front; RGB LED in rear of letter;
    - Sidewalls fin. MP 21107 Fool's Gold;
- Letters mount to a backing structure with Texas profile with welded tubular steel framework and .090 alum. plate fin. MP 21107;
- "Texas" to be internally illuminated per letter construction / front-lit only;
  - Base: White Limestone / Autumn mix veneer over welded tubular steel framework;
  - Brick veneer: Acme Cranberry Modular Thin-Brick;
  - Planter area to have drainage ports;
  - Landscaping by others;
  - Electrical requirement: 120v;

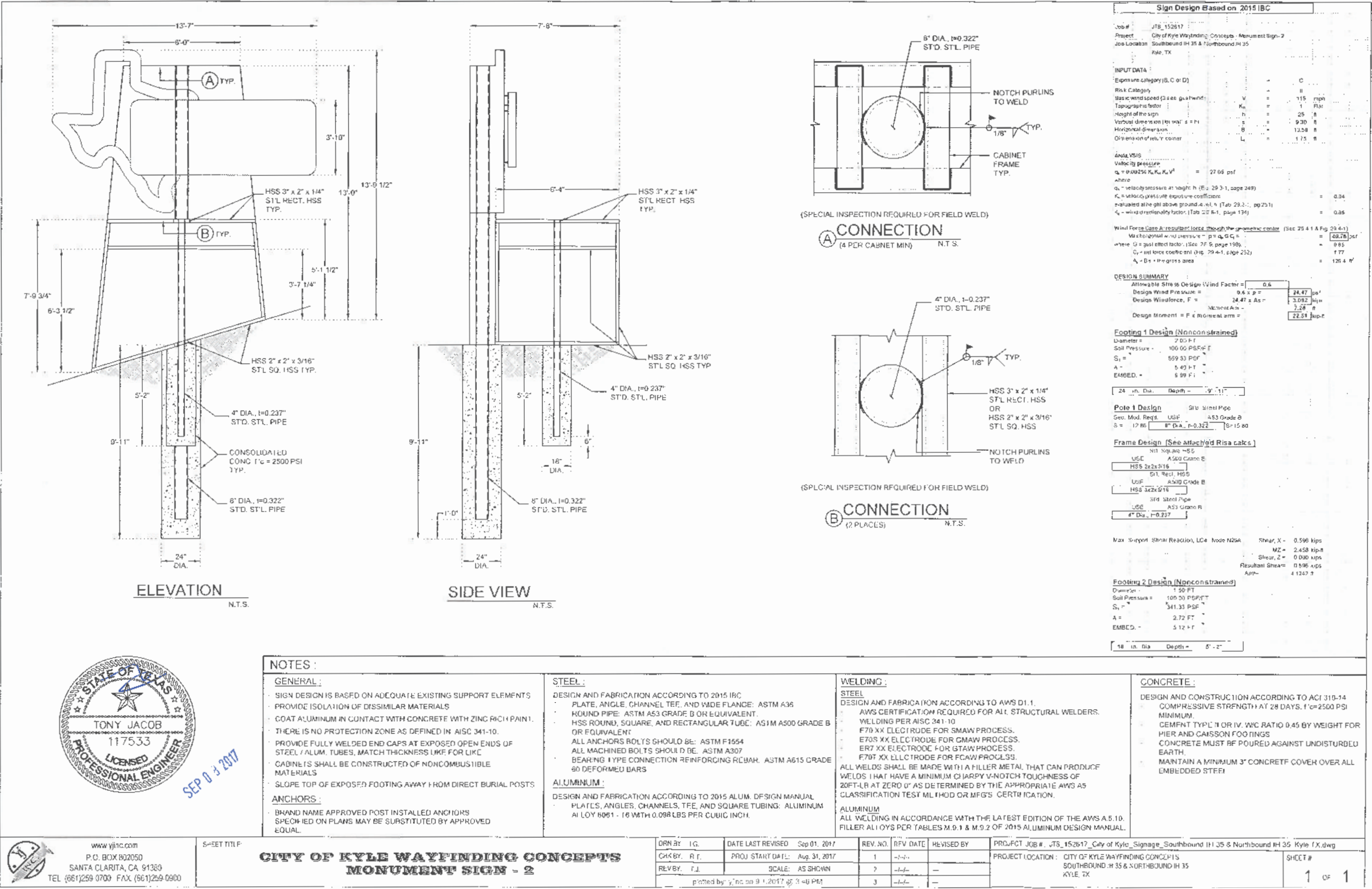
• TWO (2) MONUMENTS TO INSTALL ON SLOPED BERM; THREE (3) MONUMENTS TO BE INSTALLED ON LEVEL GRADE; ENGINEERING ON FOLLOWING PGS.



CITY OF KYLE KYLE, TEXAS	Start Date: 7/16/2017 Last Revision: Job#:92J8657 Drawing #:92J8657BV2S3	Design Rep. BEN ANGLIN Sales Rep. ANDREW CHAPMAN	CLIENT APPROVAL APPROVAL: I have reviewed and approved the sign details on this drawing for fabrication and installation. DATE	REVISIONS	
				MM/DD/YY	REMARKS
				1	
				2	
				3	
				4	
LANDLORD APPROVAL APPROVAL: I have reviewed and approved the sign details on this drawing for fabrication and installation. DATE				5	







CITY OF KYLE KYLE, TEXAS	Start Date: 7/16/2017 Last Revision: Job#:92J8657 Drawing #:92J8657BV2S3	Design Rep. BEN ANGLIN Sales Rep. ANDREW CHAPMAN	CLIENT APPROVAL APPROVAL: I have reviewed and approved the sign details on this drawing for fabrication and installation. DATE	LANDLORD APPROVAL APPROVAL: I have reviewed and approved the sign details on this drawing for fabrication and installation. DATE	REVISIONS	
					MM/DD/YY	REMARKS
					1	
					2	
					3	