

















HKS

ARCHITECT
HKS, INC.
350 NORTH SAINT PAUL, SUITE 100
DALLAS, TX 75201

CIVIL ENGINEER
PAPE-DAWSON ENGINEERS, INC.
2000 NW LOOP 410
SAN ANTONIO, TEXAS 78213

STRUCTURAL ENGINEER
DATUM ENGINEERS, INC.
5929 BALCONES DRIVE, SUITE 100
AUSTIN, TEXAS 78731

MEP ENGINEER
ESTES MCCLURE & ASSOCIATES, INC.
3608 WEST WAY
TYLER, TEXAS 75703

LANDSCAPE ARCHITECT
TGB
70 NE LOOP 410, SUITE 570
SAN ANTONIO, TX 78216

FOOD SERVICE CONSULTANT
JMK FOOD SERVICE CONSULTING & DESIGN, INC.
3411 LAKEVIEW PARKWAY, SUITE 205
ROWLETT, TEXAS 75088



IDEA KYLE ACADEMY
KYLE, TEXAS

OWNER
IDEA PUBLIC SCHOOLS
2115 W. PIKE BLVD
WESLACO, TX 78596

PROJECT MANAGER
PROJECT MANAGEMENT SERVICES, INC
900 CLARENCE BOHLS LANE
PFLUGERVILLE, TEXAS 78660

[illegible]

HKS PROJECT NUMBER
21117.000
DATE
07/07/2017
ISSUE
**PLANNING BOARD
SUBMITTAL**

SHEET TITLE
**EXTERIOR
ELEVATIONS**

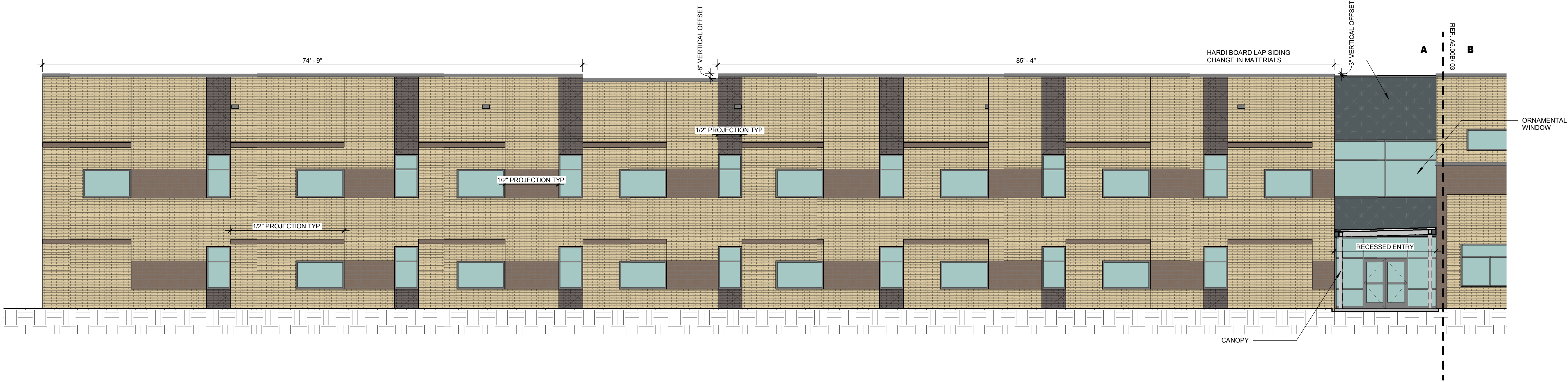
SHEET NO.

A5.00A

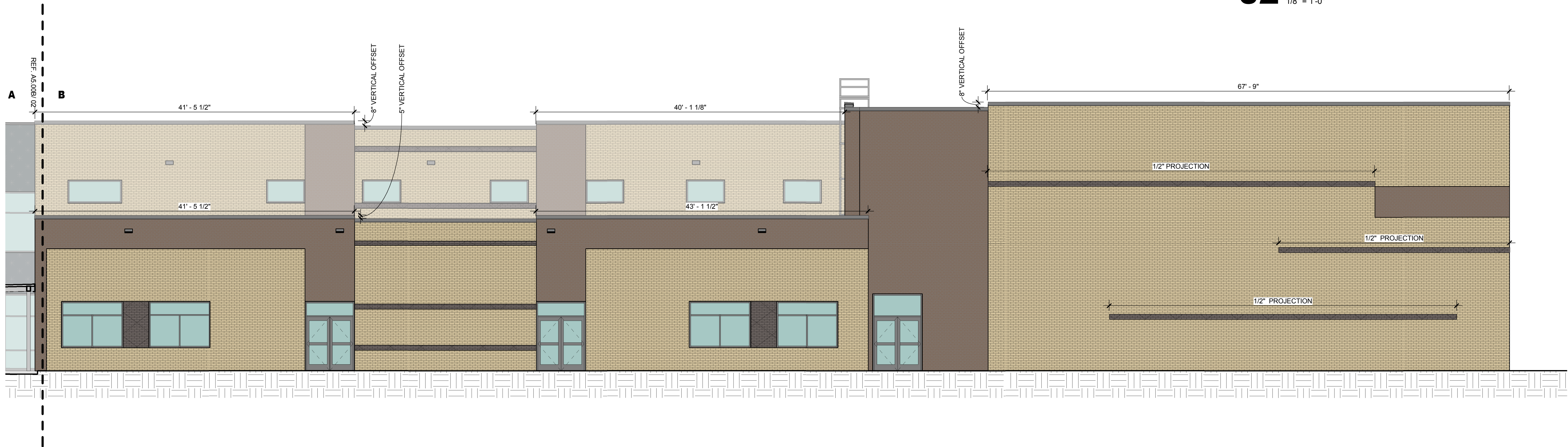




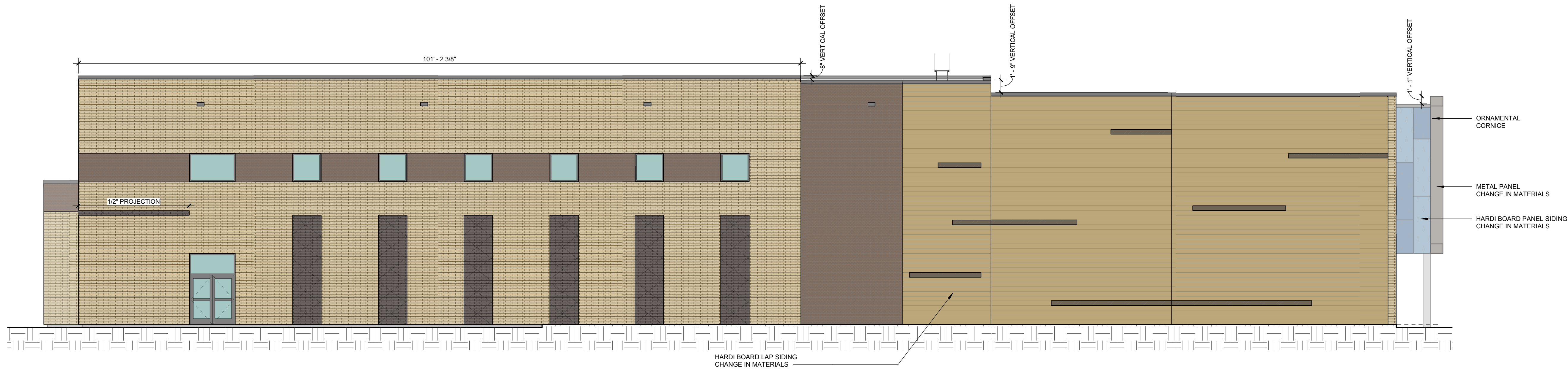
01 OVERALL SOUTH-EAST ELEVATION
1/16" = 1'-0"



02 SOUTH-EAST ELEVATION AREA A
1/8" = 1'-0"



03 SOUTH-EAST ELEVATION AREA B
1/8" = 1'-0"



04 NORTH-EAST ELEVATION
1/8" = 1'-0"

EXTERIOR ELEVATIONS NOTES		
PERCENTAGE OF BRICK WITH SIDING AT EXPANSION		
FIBER CEMENT PANEL - 1500.07 SF		
METAL PANEL - 1290.39 SF		
FIBER CEMENT SIDING - 200.15 SF		
BRICK - 29,483.62 SF		
90.5% BRICK		
9.5% OTHER		
ARCHITECTURAL ELEMENTS		
HORIZONTAL OFF SETS		
RECESSES AND PROJECTIONS		
CHANGE IN MATERIALS		
CANOPIES		
RECESSED ENTRY		
ORNAMENTAL CORNICES		
ORNAMENTAL WINDOWS		
VERTICAL ELEVATIONS OFF SETS		

HKS

ARCHITECT
HKS, INC.
350 NORTH SAINT PAUL, SUITE 100
DALLAS, TX 75201

CIVIL ENGINEER
PAPE-DAWSON ENGINEERS, INC.
2000 NW LOOP 410
SAN ANTONIO, TEXAS 78213

STRUCTURAL ENGINEER
DATUM ENGINEERS, INC.
5929 BALCONES DRIVE, SUITE 100
AUSTIN, TEXAS 78731

MEP ENGINEER
ESTES MCCLURE & ASSOCIATES, INC.
3608 WEST WAY
TYLER, TEXAS 75703

LANDSCAPE ARCHITECT
TOB
70 NE LOOP 410, SUITE 570
SAN ANTONIO, TX 78216

FOOD SERVICE CONSULTANT
JMK FOOD SERVICE CONSULTING & DESIGN, LLC
3431 LAKEVIEW PARKWAY, SUITE 205
ROWLETT, TEXAS 75088



IDEA KYLE ACADEMY
KYLE, TEXAS

OWNER
IDEA PUBLIC SCHOOLS
2115 W. PIKE BLVD
WESLACO, TX 78596

PROJECT MANAGER
PROJECT MANAGEMENT SERVICES, INC.
900 CLARENCE BOHLS LANE
PFLUGERVILLE, TEXAS 78660

KEY PLAN

REVISION	NO.	DESCRIPTION	DATE

HKS PROJECT NUMBER
21117.000
DATE
07/07/2017
ISSUE
PLANNING BOARD SUBMITTAL

SHEET TITLE
EXTERIOR ELEVATIONS

SHEET NO.

A5.00B

ARCHITECT
HKS, INC.
350 NORTH SAINT PAUL, SUITE 100
DALLAS, TX 75201

CIVIL ENGINEER
PAPE-DAWSON ENGINEERS, INC.
2000 NW LOOP 410
SAN ANTONIO, TEXAS 78213

STRUCTURAL ENGINEER
DATUM ENGINEERS, INC.
5929 BALCONES DRIVE, SUITE 100
AUSTIN, TEXAS 78731

MEP ENGINEER
ESTES MCCLURE & ASSOCIATES, INC.
3608 WEST WAY
TYLER, TEXAS 75703

LANDSCAPE ARCHITECT
TGB
70 NE LOOP 410, SUITE 570
SAN ANTONIO, TX 78216

FOOD SERVICE CONSULTANT
JMK FOOD SERVICE CONSULTING & DESIGN, LLC
3431 LAKEVIEW PARKWAY, SUITE 205
ROWLETT, TEXAS 75088



IDEA KYLE ACADEMY
KYLE, TEXAS

OWNER
IDEA PUBLIC SCHOOLS
2115 W. PIKE BLVD
WESLACO, TX 78596

PROJECT MANAGER
PROJECT MANAGEMENT SERVICES, INC
900 CLARENCE BOHLS LANE
PFLUGERVILLE, TEXAS 78660

KEY PLAN

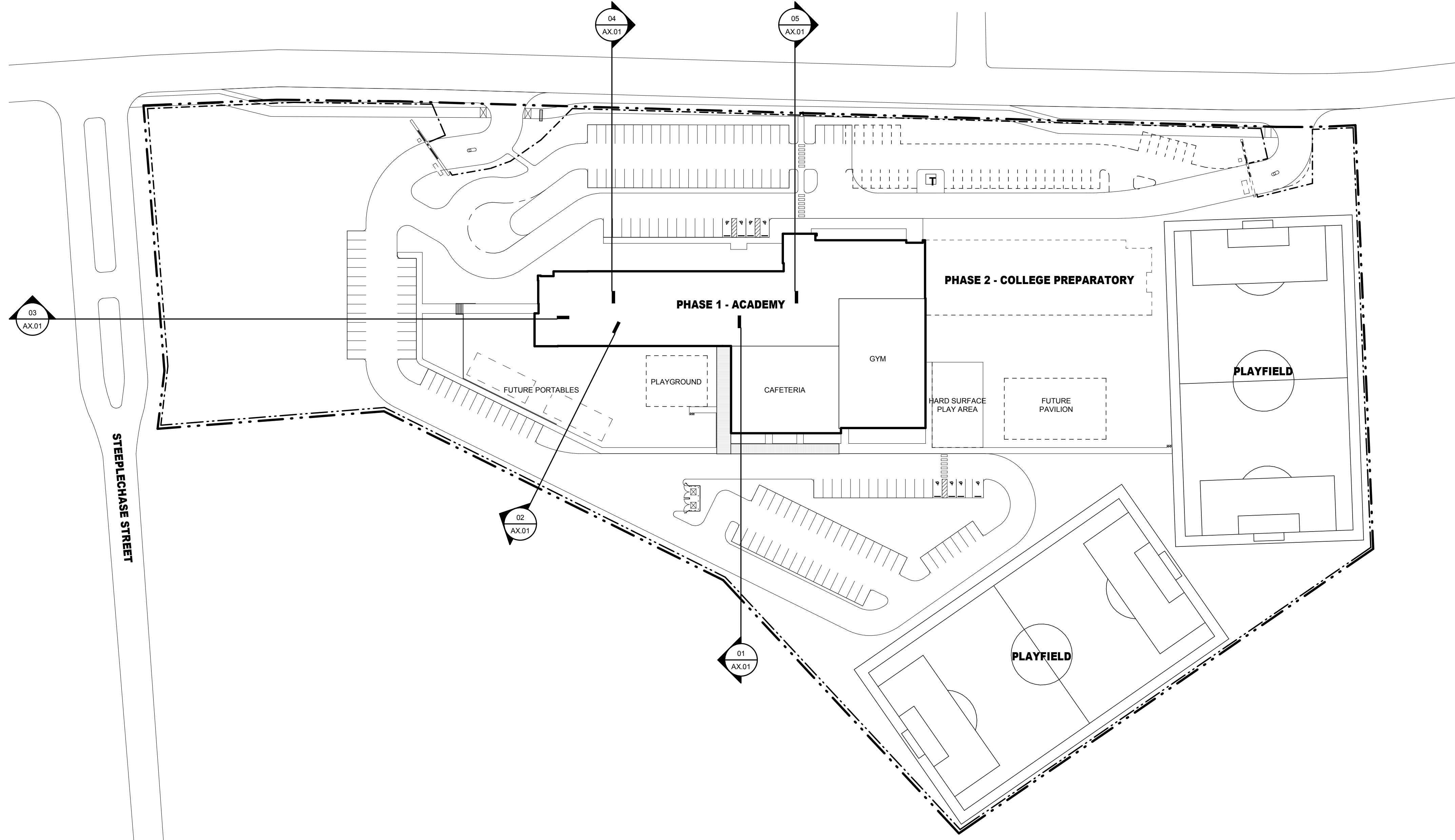
REVISION	NO.	DESCRIPTION	DATE

HKS PROJECT NUMBER
21117.000
DATE
07/07/2017
ISSUE
**PLANNING BOARD
SUBMITTAL**

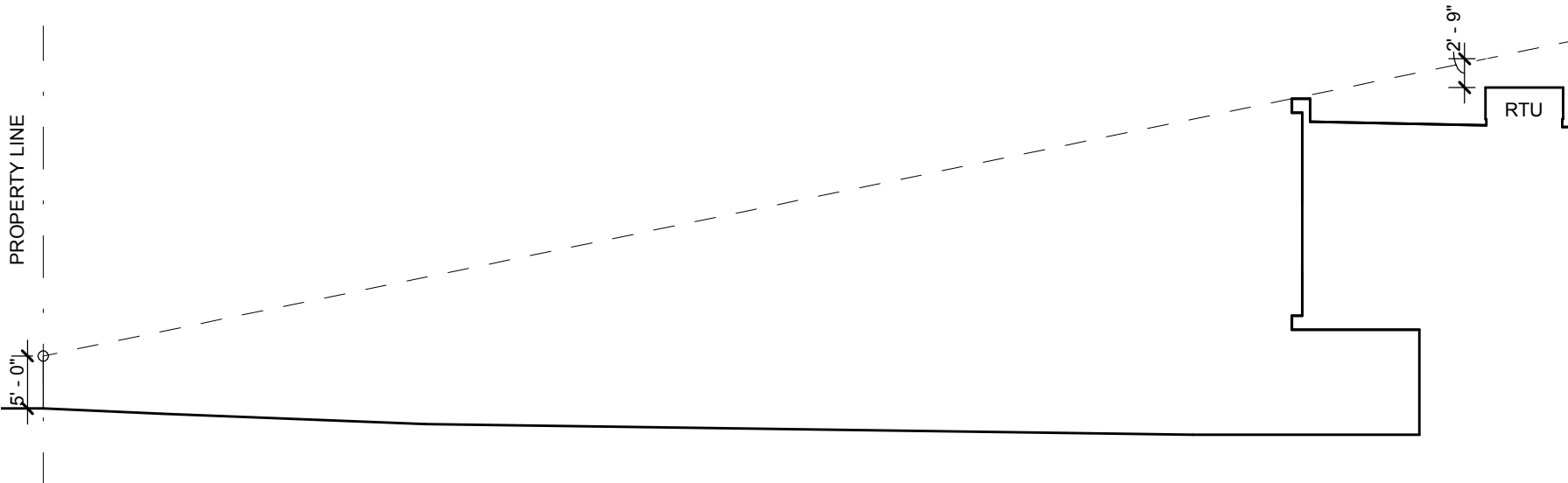
SHEET TITLE
SITE SECTIONS

SHEET NO.

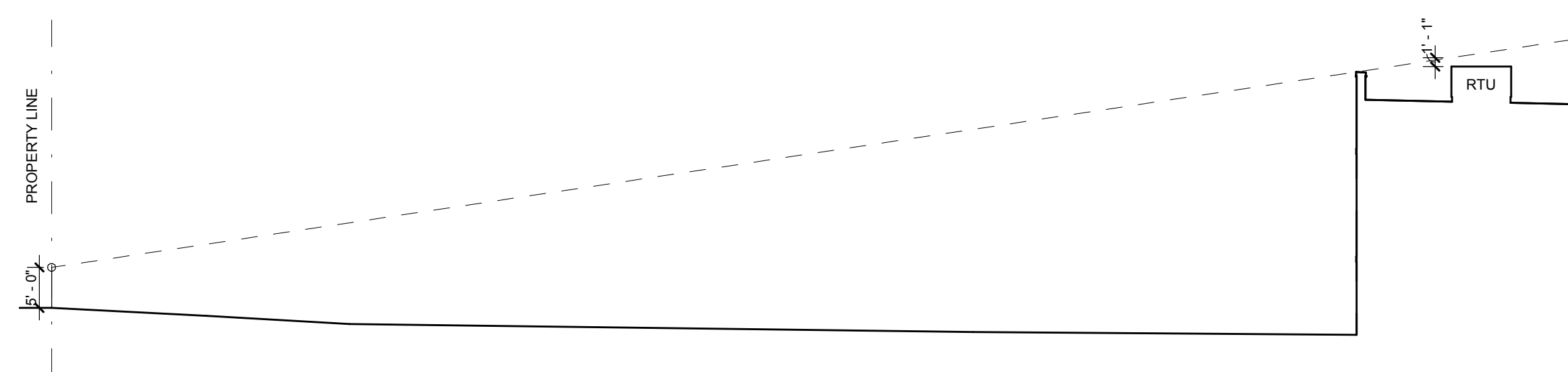
AX.01



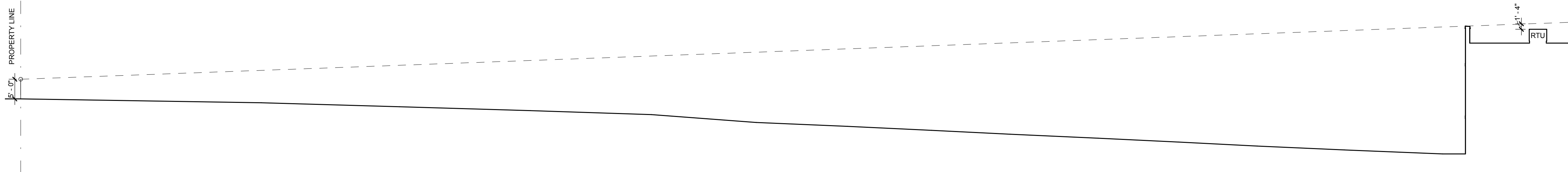
06 SITE PLAN
1/16" = 1'-0"



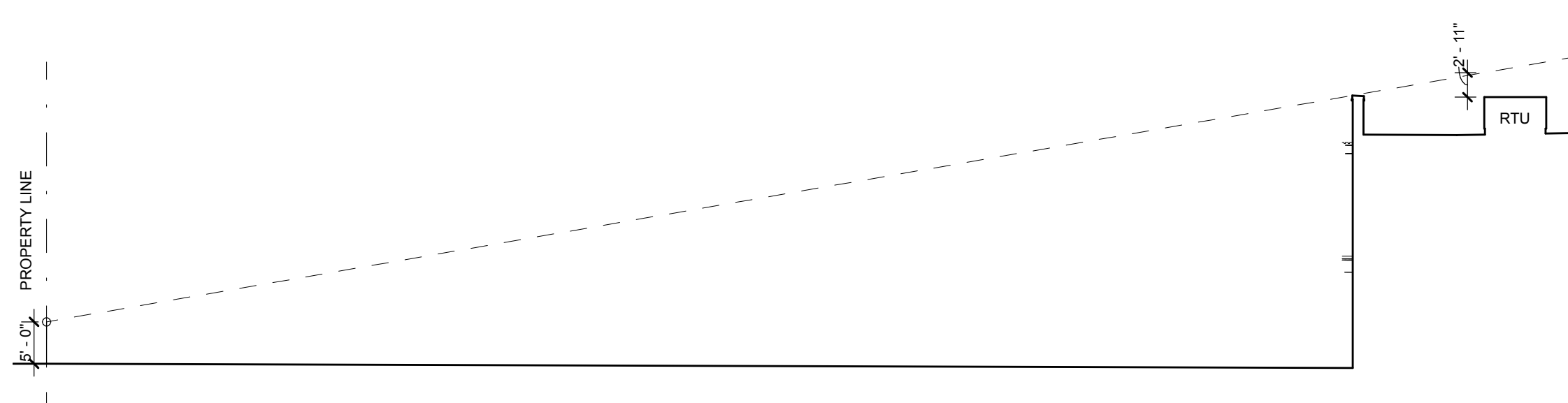
05 NORTH-WEST RTU SCREEN SECTION 02
1/16" = 1'-0"



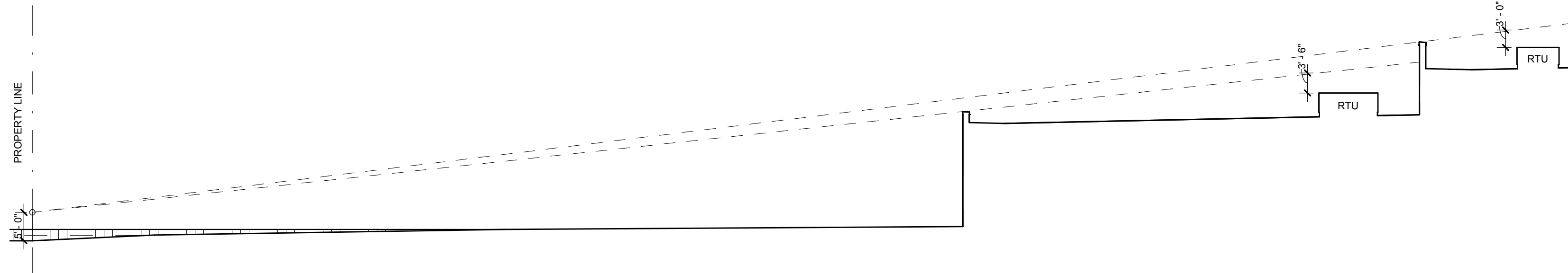
04 NORTH-WEST RTU SCREEN SECTION 01
1/16" = 1'-0"



03 WEST RTU SCREEN SECTION
1/16" = 1'-0"



02 SOUTH RTU SCREEN SECTION
1/16" = 1'-0"



01 SOUTH-EAST RTU SCREEN SECTION
1/16" = 1'-0"