



4801 Southwest Parkway, Parkway 2, Suite 150, Austin, Texas 78735, USA
T +1 512 326 5659 F +1 512 326 5723 W www.rpsgroup.com

April 25, 2017

City of Kyle
Mr. Leon Barba, P.E. – City Engineer
100 W. Center Street
Kyle, TX 78640

RE: Proposal for Additional Professional Services – Contract Amendment No. 5
Final Design Updates
Southside Wastewater Improvements Project
RPS Project No. 12066.00

Dear Mr. Barba:

RPS is pleased to present this proposal for additional professional engineering services to the City for design changes to the Southside Wastewater Improvements Project. We are submitting this information for your review under the requirements of the Professional Services Agreement, Section XV, "Adjustments in Services." The contract amendment is needed due to major design changes after publishing the 90% Plans, Specifications, and Estimates. The changes resulted from the City's easement acquisition process and negotiations with landowners as well as changing project service area conditions. A summary of the additional services are generally described as follows:

- Feasibility Analysis – Evaluate interim connection to the City of San Marcos gravity collection system in lieu of proposed lift station
- Design changes at the Kyle Correctional Facility, I-35 crossings, and connections to connecting interceptors at FM 150 and Lehman Road.
- Design changes resulting from increased size of gravity interceptor pipe.
- Additional bore under IH-35 for future connection to Elliott Branch WW Interceptor.

This effort is fully described within the attached scope of work for civil design and surveying services. If the scope of work meets with your approval, please sign and return to our office. The total lump sum compensation request is \$37,416 for RPS and the subconsultants, as summarized on attachment B-1. All authorizations for the Southside portion of the projects, including this proposed Amendment No. 5 will total \$638,737, which is 9.8% of the anticipated construction cost of \$6,500,000. Thank you for the opportunity to submit our request, feel free to contact us with any questions.

Sincerely,
RPS
TBPE Firm Reg. No. F-293

A handwritten signature in blue ink that reads "Wade Benton".

Wade Benton, P.E.
Sr. Project Manager

Attachments

Cc: Brent Christian, P.E. – RPS Project Principal
James Earp, CPM – City of Kyle Assistant City Manager

EXHIBIT A
SCOPE OF SERVICES
CONTRACT AMENDMENT NO. 5

Project Description

RPS will redesign various aspects of the Southside Wastewater Improvements project as **Contract Amendment #5** under the **Southside Wastewater Improvements Project**. The additional scope of services for Contract Amendment #5 includes:

1. Redesign approximately 820 feet of 18" wastewater line in TXDOT right-of-way in front of the Kyle Correctional Facility.
2. Design approximately 70 feet of 8" wastewater line across Tract 24 from the Southside Wastewater Improvements project.
3. Update the design of the proposed wastewater line crossing under I-35 to include pipe size changes.
4. Incorporate the I-35 crossing of the Elliott Branch Wastewater Interceptor into the Southside Wastewater Improvements project and develop design drawings to be 100% bid documents.
5. Update the wastewater line in the vicinity of FM150 and Lehman Road to accommodate separate wastewater interceptor improvements planned for FM 150 and Lehman Road.
6. Update 90% plan documents to incorporate the improvements listed above and incorporate the modifications into the 100% bid documents for the overall project.

The descriptions of revisions or additions to the scope of services for Contract Amendment #5 are described below as applicable to the corresponding Task number.

Task 1 – Project Management

Task 1.1 includes additional project management efforts during the redesign phase for the improvements listed above. This management time is in addition to the project management efforts included in prior contract amendments.

Task 1.2 includes an additional six (6) project coordination meetings not included in the original contract or prior amendments.

Task 2 – Data Collection and Preliminary Investigations

Task 2.1 includes the subconsultant's (McGray & McGray) efforts to perform additional design topographical survey associated with items number 1 above. The proposal for additional surveying services has been attached.

Task 3 – Preliminary Engineering (30% Design)

Task 3.1 ENGINEER and its subconsultants will perform feasibility analysis concerning connection to the City of San Marcos gravity wastewater collection system in lieu of constructing the proposed Southside WW Lift Station. The corresponding fee for this assessment is reflected in Attachment B-1.

Task 4 – Final Engineering (60%, 90%, and 100% Design)

Task 4.1 thru Task 4.5 - ENGINEER and its subconsultants will include the additional design elements and revisions into the Final Engineering submittal that is to be performed in Contract Amendment #5. All of the scope items of the original contract and subsequent contract amendments will still apply under this task. The corresponding fee for these revisions is reflected in Attachment B-1.

Services or information to be provided by the CITY:

The services or information to be provided by the CITY are the same as original proposal unless otherwise noted above.

Exclusions / Items not included in this scope of services:

The exclusions / items not included in this scope of services are the same as original proposal unless otherwise noted above.

Expenses:

ENGINEER has included an estimated budget for miscellaneous expenses on Attachment B-1. Miscellaneous expenses including reproductions will continue to be provided in accordance with the approved RPS rate sheet.

If this proposal meets with your approval, please sign below and return to our office. Thank you.

To the CITY:

R. Todd Webster
Mayor
City of Kyle
100 West Center Street
Kyle, Texas 78640
Fax: (512) 262-3987

To the ENGINEER:

Wade Benton, P.E.
Sr. Project Manager
RPS
4801 Southwest Parkway, Parkway 2, Suite 150
Austin, Texas 78735
Fax: (512) 326-5659

CITY OF KYLE, TEXAS

ESPEY CONSULTANTS, INC. dba RPS

Signature _____

Signature Wade Benton

Printed Name _____

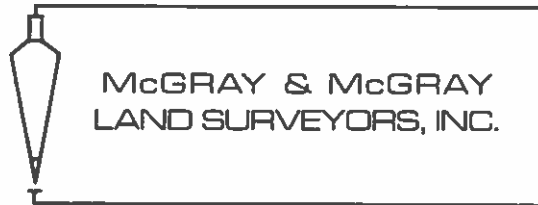
Printed Name Wade Benton, P.E.

Title _____

Title Sr. Project Manager

Date _____

Date 04/25/17



March 16, 2017

Mr. Wade Benton
RPS
4801 Southwest Parkway
Parkway 2, Ste. 150
Austin, TX 78735
(512) 326-5659

VIA E-MAIL
wade.benton@klotz.com

RE: Proposal for Additional Design Surveying Services for the Southside Wastewater Interceptor Improvements Project in Kyle, Texas

Dear Mr. Benton:

We appreciate the opportunity to present you with this proposal for additional design surveying services for the above referenced project. The following represents our understanding of the services being requested.

Survey Limits:

- The survey limits are approximately shown on the attached exhibit.

Scope of Services:

- Update existing survey to show new or relocated utilities and improvements within the survey area.

Fee:

2 Man Crew:	12 hrs @	\$150.00 /hr.=	\$	1,800.00
Field Coordinator:	1 hrs @	\$98.00 /hr.=	\$	98.00
Sr. Tech:	6 hrs @	\$96.00 /hr.=	\$	576.00
Tech:	12 hrs @	\$82.00 /hr.=	\$	984.00
RPLS:	1 hrs @	\$145.00 /hr.=	\$	145.00
Project Manager:	0.5 hrs @	\$165.00 /hr.=	\$	82.50
LUMP SUM FEE TOTAL=				\$ 3,685.50

We can start this project immediately after receipt of notice to proceed. We estimate this project will take approximately 3 to 4 weeks to complete, weather and circumstances beyond our control permitting. If you need us to accelerate this schedule, please let us know so we can configure our staff accordingly.

Thank you for including us on this project. We look forward to the opportunity to work with you. If you think we have omitted any service you require or misinterpreted your request, please let me know.

Sincerely,



Chris Conrad, RPLS
Vice President
TBPLS Firm# 10095500

Authorized to Proceed by:

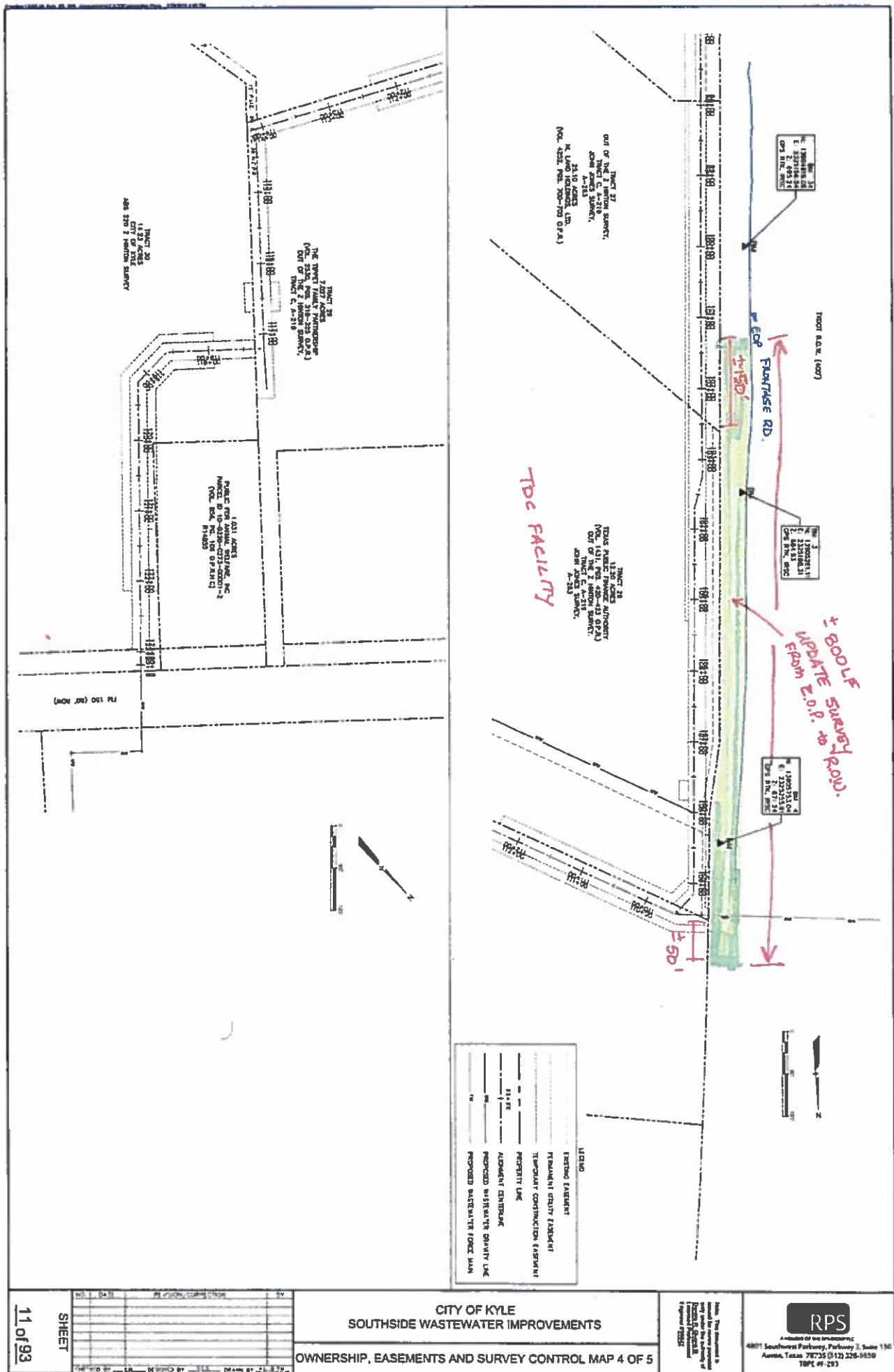
Signature

Date

Print Name

Title

CIC: klr
encl.



ATTACHMENT B-1

FEE ESTIMATE

Contract Amendment #5 - LUMP SUM

City of Kyle
 Southside Wastewater Interceptor
 April 25, 2017

Yellow = data input
 Green, orange = calculated

Fee Breakdown

Task		Task Name	Comments	RPS Labor						Other Direct Costs (ODCs)						Subconsultants		Total Fee		
No				Sr. Project Manager / Principal	Sr. Project Manager QA/QC	Sr. Project Engineer	Project Engineer	Sr. CAD	Admin	RPS Hours	Labor Cost	Miles	Mileage Cost	Other Misc.	Markup on ODCs	Total ODCs	Subs Fee		Markup on Subs	
			Average Rates	\$245.00	\$195.00	\$165.00	\$145.00	\$108.00	\$65.00					\$0.650		10%			5%	
			Assumptions																	
1		BASIC SERVICES																		
		Project Management		28	0	0	6	4	18	56	\$9,332	100	\$65	\$0	\$0	\$65	\$0	\$0	\$9,397	
	1.1	Project Administration - additional 4 months		16					12	28	\$4,700		\$0	\$0	\$0	\$0	\$0	\$0	\$4,700	
1.2	Project Progress Meetings - additional 6			12			6	4	6	28	\$4,632	100	\$65	\$0	\$0	\$65	\$0	\$0	\$4,697	
2		Data Collection & Preliminary Invest.		2	0	0	0	4	0	6	\$922	0	\$0	\$0	\$0	\$0	\$0	\$3,686	\$184	\$4,792
	2.1	Perform additional Topographic Surveys	see sub scope	2				4		6	\$922		\$0			\$0	\$0	\$3,686	\$184	\$4,792
3		Preliminary Engineering (30%)		16	0	0	16	4	0	36	\$6,672	0	\$0	\$0	\$0	\$0	\$0	\$0	\$0	\$6,672
	3.1	San Marcos System Connection feasibility		16			16	4		36	\$6,672		\$0			\$0	\$0	\$0	\$0	\$6,672
4		Final Engineering (60%,90%, 100%)		5	8	18	0	100	0	131	\$16,555	0	\$0	\$0	\$0	\$0	\$0	\$0	\$0	\$16,555
	4.1	Revise alignment at Prison and Tract 24		1	1	4		32		38	\$4,556		\$0			\$0	\$0	\$0	\$0	\$4,556
4.2	Revise plans for lines crossing I-35 (change in size)			1	1	2		12		16	\$2,066		\$0			\$0	\$0	\$0	\$2,066	
4.3	Add additional I-35 crossing (Elliott Branch)			1	1	4		24		30	\$3,692		\$0			\$0	\$0	\$0	\$3,692	
4.4	Update design at FM150 and Lehman Road			1	1	2		12		16	\$2,066		\$0			\$0	\$0	\$0	\$2,066	
	Update 2014 (95%) plans to incorporate design changes, update quantities, cost estimate			1	4	6		20		31	\$4,175		\$0			\$0	\$0	\$0	\$4,175	
		Total for Contract Amendment No. 3		51	8	18	22	112	18	229	\$33,481	100	\$65	\$0	\$0	\$65	\$3,686	\$184	\$37,416	